



BCL-2 (PT0007R) rabbit mAb

货号	BYab-18035
同位型	IgG
应用	WB;ELISA
种属	Human; Mouse; Rat;
靶点	Bcl-2
简介	>>EGFR tyrosine kinase inhibitor resistance;>>Endocrine resistance;>>Platinum drug resistance;>>NF-kappa B signaling pathway;>>HIF-1 signaling pathway;>>Sphingolipid signaling pathway;>>p53 signaling pathway;>>Autophagy - animal;>>Protein processing in endoplasmic reticulum;>>PI3K-Akt signaling pathway;>>Apoptosis;>>Apoptosis - multiple species;>>Necroptosis;>>Adrenergic signaling in cardiomyocytes;>>Hedgehog signaling pathway;>>Focal adhesion;>>NOD-like receptor signaling pathway;>>JAK-STAT signaling pathway;>>Neurotrophin signaling pathway;>>Cholinergic synapse;>>Estrogen signaling pathway;>>Parathyroid hormone synthesis, secretion and action;>>AGE-RAGE signaling pathway in diabetic complications;>>Amyotrophic lateral sclerosis;>>Pathways of neurodegeneration - multiple diseases;>>Shigellosis;>>Salmonella infection;>>Toxoplasmosis;>>Tuberculosis;>>Hepatitis B;>>Measles;>>Herpes simplex virus 1 infection;>>Epstein-Barr virus infection;>>Human immunodeficiency virus 1 infection
基因名称	BCL2
蛋白名称	Apoptosis regulator Bcl-2
免疫原	Synthesized peptide derived from human protein. AA range:1-100
特异性	endogenous
组成	PBS, 50% glycerol, 0.05% Proclin 300, 0.05%BSA
来源	Monoclonal Rabbit IgG1, Kappa
稀释	WB 1:500-2000 ELISA: 1:20000
纯化工艺	Protein A
实测条带	26kD
分子量	26kD

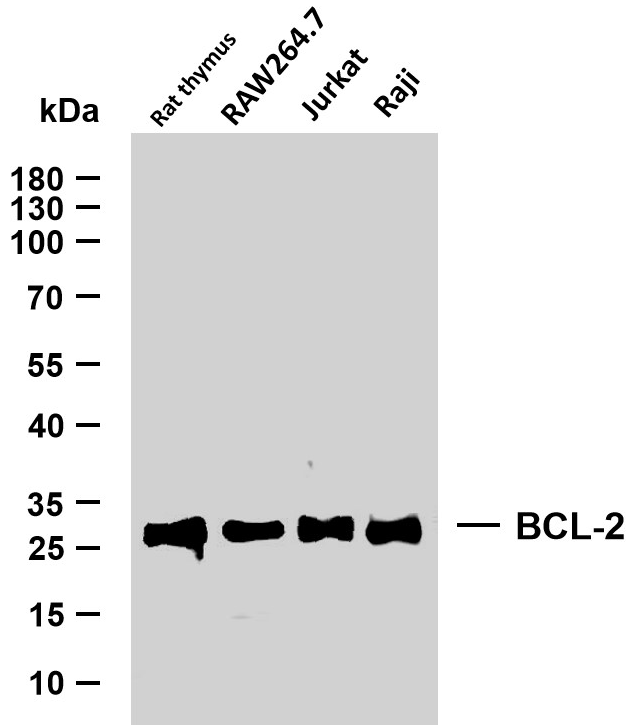
Nanjing BYabscience technology Co.,Ltd



其他名称	BCL2;Apoptosis regulator Bcl-2
背景	BCL2, apoptosis regulator(BCL2) Homo sapiens This gene encodes an integral outer mitochondrial membrane protein that blocks the apoptotic death of some cells such as lymphocytes. Constitutive expression of BCL2, such as in the case of translocation of BCL2 to Ig heavy chain locus, is thought to be the cause of follicular lymphoma. Alternative splicing results in multiple transcript variants. [provided by RefSeq, Feb 2016],
功能	disease:A chromosomal aberration involving BCL2 may be a cause of follicular lymphoma (FL) [MIM:151430]; also known as type II chronic lymphatic leukemia. Translocation t(14;18)(q32;q21) with immunoglobulin gene regions. BCL2 mutations found in non-Hodgkin lymphomas carrying the chromosomal translocation could be attributed to the Ig somatic hypermutation mechanism resulting in nucleotide transitions.,domain:The BH4 motif is required for anti-apoptotic activity and for interaction with RAF-1.,function:Suppresses apoptosis in a variety of cell systems including factor-dependent lymphohematopoietic and neural cells. Regulates cell death by controlling the mitochondrial membrane permeability. Appears to function in a feedback loop system with caspases. Inhibits caspase activity either by preventing the release of cytochrome c from the mitochondria and/or by binding to the apoptosis-activati
细胞定位	Mitochondrion outer membrane ; Single-pass membrane protein . Nucleus membrane ; Single-pass membrane protein . Endoplasmic reticulum membrane ; Single-pass membrane protein . Cytoplasm .
组织表达	Expressed in a variety of tissues.
浓度	1 mg/ml
储存	-15°C to -25°C/1 year(Do not lower than -25°C)
有关注意事项	Avoid repeated freezing and thawing!
使用建议	This product can be used in immunological reaction related experiments. For more information, please consult technical personnel.

Products Images

Nanjing BYabscience technology Co.,Ltd



Various whole cell lysates were separated by 10% SDS-PAGE and the membrane was blotted with anti-BCL-2 (PT0007R) antibody. The HRP-conjugated Goat anti-Rabbit IgG(H + L) antibody was used to detect the antibody. Lane 1: Rat thymus Lane 2: RAW264.7 Lane 3: Jurkat Lane 4: Raji Predicted bandsize: 26kDa Observed band size: 26kDa