



Iba1 Polyclonal Antibody

货号	BYab-17935
同位型	IgG
应用	WB;IF;ELISA
种属	Human;Rat;Mouse
靶点	AIF1
基因名称	AIF1 G1 IBA1
蛋白名称	Allograft inflammatory factor 1 (AIF-1) (Ionized calcium-binding adapter molecule 1) (Protein G1)
免疫原	Synthesized peptide derived from part region of human protein
特异性	AIF1 Polyclonal Antibody detects endogenous levels of protein.
组成	Liquid in PBS containing 50% glycerol, and 0.02% sodium azide.
来源	Polyclonal, Rabbit,IgG
稀释	WB 1:500 - 1:2000. ELISA: 1:5000. IF 1:100-300 Not yet tested in other applications.
纯化工艺	The antibody was affinity-purified from rabbit antiserum by affinity-chromatography using epitope-specific immunogen.
实测条带	16kD
背景	This gene encodes a protein that binds actin and calcium. This gene is induced by cytokines and interferon and may promote macrophage activation and growth of vascular smooth muscle cells and T-lymphocytes. Polymorphisms in this gene may be associated with systemic sclerosis. Alternative splicing results in multiple transcript variants, but the full-length and coding nature of some of these variants is not certain. [provided by RefSeq, Jan 2016],
功能	function:May play a role in macrophage activation and function.,PTM:Phosphorylated on serine residues.,similarity:Contains 2 EF-hand domains.,
细胞定位	Cytoplasm, cytoskeleton . Cell projection, ruffle membrane ; Peripheral membrane protein ; Cytoplasmic side . Cell projection, phagocytic cup . Associated with the actin cytoskeleton at membrane ruffles and at sites of phagocytosis. .
组织表达	Detected in T-lymphocytes and peripheral blood mononuclear cells.
浓度	1 mg/ml
储存	-15°C to -25°C/1 year(Do not lower than -25°C)

Nanjing BYabscience technology Co.,Ltd



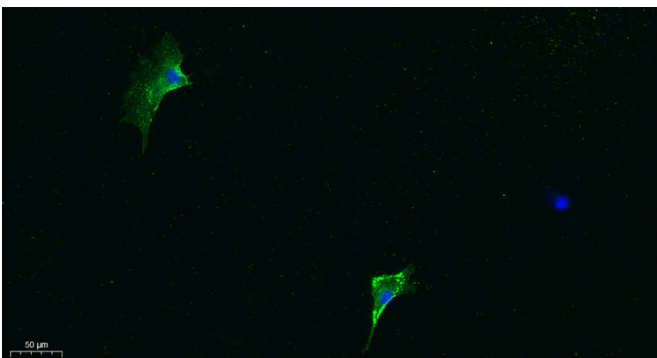
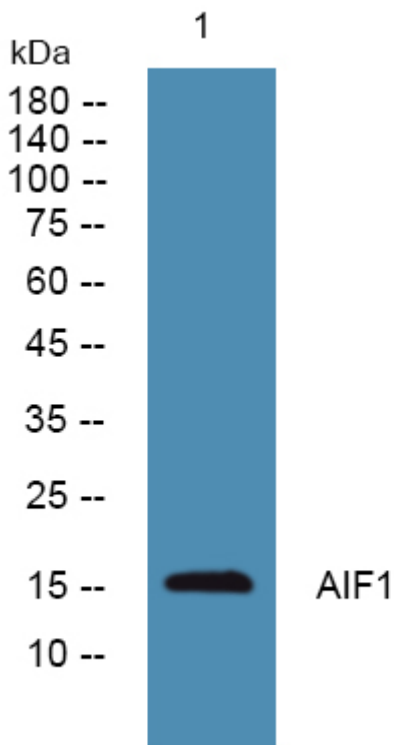
有关注意事项

Avoid repeated freezing and thawing!

使用建议

This product can be used in immunological reaction related experiments. For more information, please consult technical personnel.

Products Images



Nanjing BYabscience technology Co.,Ltd

网址: www.njbybio.com

官方热线: 025-5229-8998

监督电话: 15950492658