



Ferritin Light Chain Rabbit mAb

Catalog No	BYab-17912
Isotype	IgG
Reactivity	Human,Mouse,Rat
Applications	WB,IP,FC
Gene Name	FTL
Alternative Names	Ferritin L chain; Ferritin L subunit; Ferritin light chain; Ferritin light polypeptide; ferritin light polypeptide like 3; FTL; LFTD; NBIA 3;
Research Field	Neuroscience
Product Categories	Primary antibody
Host	Rabbit
Molecular Weight	Calculated MW: 20 kDa;Observed MW:20kDa
Clonality	Monoclonal Antibody
Clonality No.	R25-8L-4
Dilution	WB: 1/500-1/1000 IP: 1/50 FC: 1/50
Immunogen	A synthesized peptide derived from human Ferritin Light Chain
Purification	Affinity Chromatography
Conjugation	Unconjugated
Modification	Unmodified
Form	Liquid
Buffer System	Liquid in PBS , pH 7.4, 150mM NaCl, 0.02% sodium azide and 50% glycerol.
Concentration	1 mg/ml
Purity	≥90%
Storage	Store at 4°C short term. Aliquot and store at -20°C long term. Avoid freeze/thaw cycles.
Background	Stores iron in a soluble, non-toxic, readily available form. Important for iron homeostasis. Iron is taken up in the ferrous form and deposited as ferric hydroxides after oxidation. Also plays a role in delivery of iron to cells. Mediates iron uptake in capsule cells of the developing kidney.

Nanjing BYabscience technology Co.,Ltd



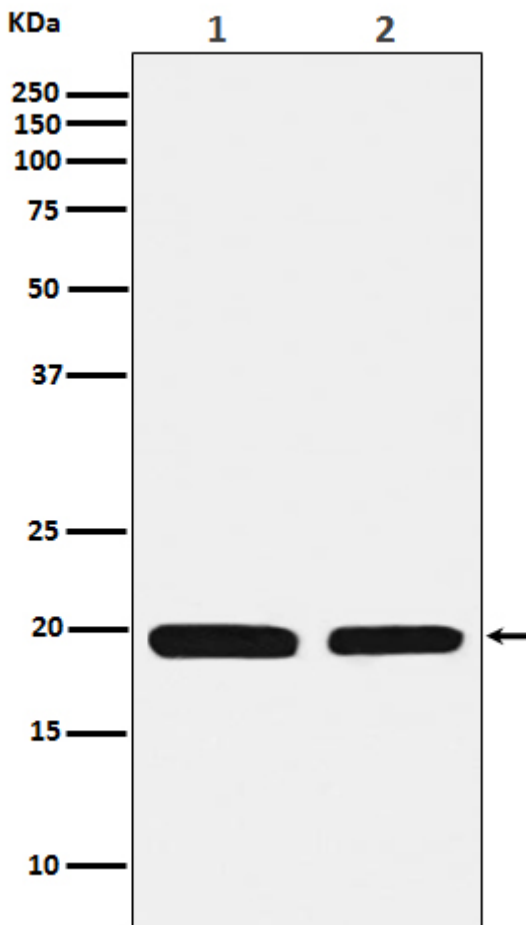
matters needing attention

Avoid repeated freezing and thawing!

Usage suggestions

This product can be used in immunological reaction related experiments. For more information, please consult technical personnel.

Products Images



Nanjing BYabscience technology Co.,Ltd