



ATP7B Rabbit mAb

Catalog No	BYab-17911
Isotype	IgG
Reactivity	Human
Applications	WB,ICC/IF,FC
Gene Name	ATP7B
Alternative Names	ATP7B; PWD; WC1; WD; WND; WND/140 kDa
Research Field	Signal Transduction
Product Categories	Primary antibody
Host	Rabbit
Molecular Weight	Calculated MW: 157 kDa; Observed MW: 157 kDa
Clonality	Monoclonal Antibody
Clonality No.	R08-7K3
Dilution	WB: 1/500-1/1000 IF: 1/50-1/200 FC: 1/50-1/100
Immunogen	A synthesized peptide derived from human ATP7b
Purification	Affinity Purified
Conjugation	Unconjugated
Modification	Unmodified
Form	Liquid
Buffer System	Rabbit IgG in phosphate buffered saline , pH 7.4, 150mM NaCl, 0.02% sodium azide and 50% glycerol.
Concentration	1 mg/ml
Purity	≥90%
Storage	Store at 4°C short term. Aliquot and store at -20°C long term. Avoid freeze/thaw cycles.
Background	Involved in the export of copper out of the cells, such as the efflux of hepatic copper into the bile.

Nanjing BYabscience technology Co.,Ltd



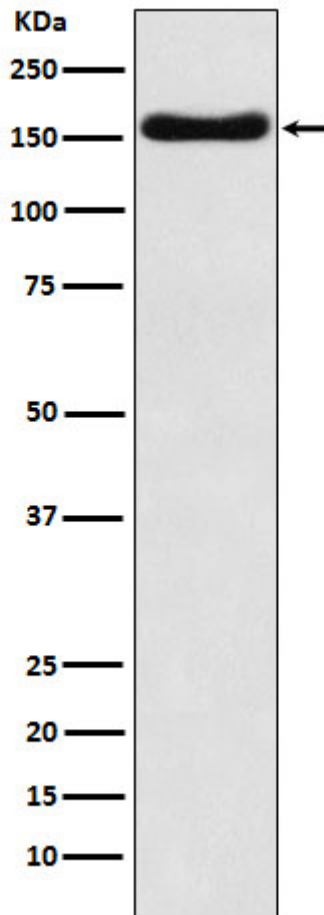
matters needing attention

Avoid repeated freezing and thawing!

Usage suggestions

This product can be used in immunological reaction related experiments. For more information, please consult technical personnel.

Products Images



Nanjing BYabscience technology Co.,Ltd