



CD62E Mouse mAb

Catalog No	BYab-17908
Isotype	Mouse IgG2b
Reactivity	Human
Applications	ICC/IF,FC,ELISA
Gene Name	CD62E
Alternative Names	ELAM; ESEL; SELE; ELAM1; LECAM2
Research Field	-
Product Categories	Primary antibody
Host	Mouse
Molecular Weight	-
Clonality	Monoclonal Antibody
Clonality No.	7V9-X6-W4
Dilution	IF: 1/50-1/200 FC: 1/50-1/100 ELISA: 1/10000
Immunogen	Purified recombinant fragment of human CD62E expressed in E. Coli.
Purification	Affinity Purified
Conjugation	Unconjugated
Modification	Unmodified
Form	Liquid
Buffer System	Purified antibody in PBS with 0.05% sodium azide
Concentration	1 mg/ml
Purity	≥90%
Storage	Store at 4°C short term. Aliquot and store at -20°C long term. Avoid freeze/thaw cycles.
Background	The protein encoded by this gene is found in cytokine-stimulated endothelial cells and is thought to be responsible for the accumulation of blood leukocytes at sites of inflammation by mediating the adhesion of cells to the vascular lining. It exhibits structural features such as the presence of lectin- and EGF-like domains followed by short consensus repeat (SCR) domains that contain 6 conserved cysteine

Nanjing BYabscience technology Co.,Ltd



residues. These proteins are part of the selectin family of cell adhesion molecules. Adhesion molecules participate in the interaction between leukocytes and the endothelium and appear to be involved in the pathogenesis of atherosclerosis. [provided by RefSeq, Jul 2008]

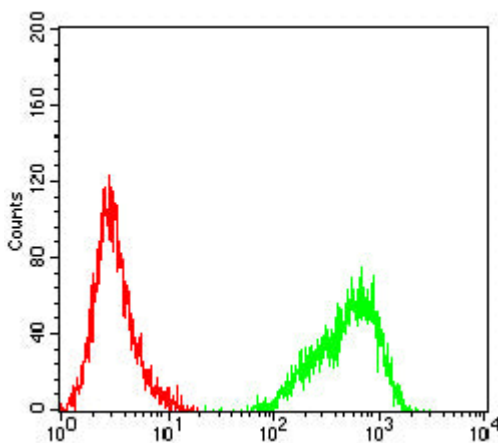
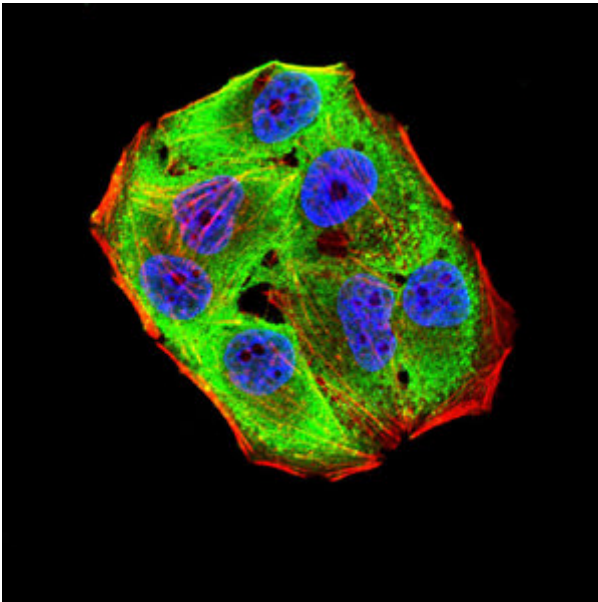
matters needing attention

Avoid repeated freezing and thawing!

Usage suggestions

This product can be used in immunological reaction related experiments. For more information, please consult technical personnel.

Products Images



Nanjing BYabscience technology Co.,Ltd