



# Transcription Factor 21 Rabbit mAb

<b>Catalog No</b>	BYab-17903
<b>Isotype</b>	IgG
<b>Reactivity</b>	Human
<b>Applications</b>	WB,IP,FC
<b>Gene Name</b>	TCF21
<b>Alternative Names</b>	Capsulin; Epicardin; POD 1; POD1; TCF-21; tcf21
<b>Research Field</b>	-
<b>Product Categories</b>	Primary antibody
<b>Host</b>	Rabbit
<b>Molecular Weight</b>	Calculated MW: 20 kDa; Observed MW: 26 kDa
<b>Clonality</b>	Monoclonal Antibody
<b>Clonality No.</b>	R08-9F2
<b>Dilution</b>	WB: 1/500-1/1000 IP: 1/60 FC: 1/50-1/100
<b>Immunogen</b>	A synthesized peptide derived from human TCF21
<b>Purification</b>	Affinity Purified
<b>Conjugation</b>	Unconjugated
<b>Modification</b>	Unmodified
<b>Form</b>	Liquid
<b>Buffer System</b>	Rabbit IgG in phosphate buffered saline , pH 7.4, 150mM NaCl, 0.02% sodium azide and 50% glycerol.
<b>Concentration</b>	1 mg/ml
<b>Purity</b>	≥90%
<b>Storage</b>	Store at 4°C short term. Aliquot and store at -20°C long term. Avoid freeze/thaw cycles.
<b>Background</b>	Involved in epithelial-mesenchymal interactions in kidney and lung morphogenesis that include epithelial differentiation and branching morphogenesis. May play a role in the specification or differentiation of one or more subsets of epicardial cell types.

Nanjing BYabscience technology Co.,Ltd



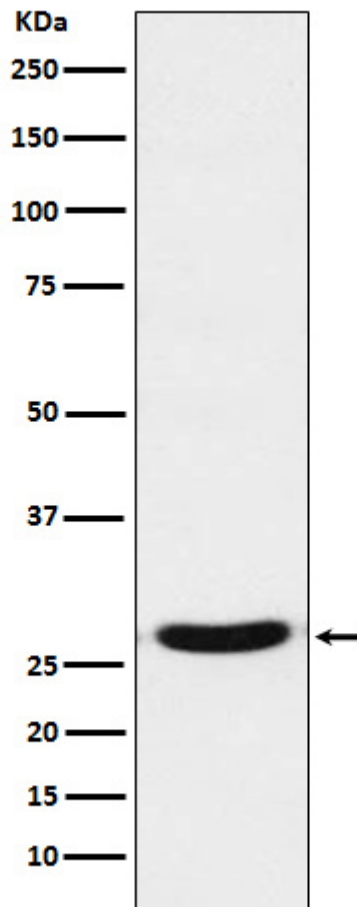
**matters needing attention**

Avoid repeated freezing and thawing!

**Usage suggestions**

This product can be used in immunological reaction related experiments. For more information, please consult technical personnel.

## Products Images



Nanjing BYabscience technology Co.,Ltd