



# MLKL Rabbit pAb

<b>Catalog No</b>	BYab-17897
<b>Isotype</b>	IgG
<b>Reactivity</b>	Human,Mouse
<b>Applications</b>	WB,IHC-P
<b>Gene Name</b>	MLKL
<b>Alternative Names</b>	MLKL
<b>Research Field</b>	Signal Transduction
<b>Product Categories</b>	Primary antibody
<b>Host</b>	Rabbit
<b>Molecular Weight</b>	Calculated MW: 54 kDa; Observed MW: 54 kDa
<b>Clonality</b>	Polyclonal Antibody
<b>Clonality No.</b>	-
<b>Dilution</b>	WB: 1/500-1/1000 IHC: 1/50-1/100
<b>Immunogen</b>	A synthesized peptide derived from human MLKL
<b>Purification</b>	Affinity Chromatography
<b>Conjugation</b>	Unconjugated
<b>Modification</b>	Unmodified
<b>Form</b>	Liquid
<b>Buffer System</b>	Rabbit IgG in phosphate buffered saline , pH 7.4, 150mM NaCl, 0.02% sodium azide and 50% glycerol.
<b>Concentration</b>	1 mg/ml
<b>Purity</b>	≥90%
<b>Storage</b>	Store at 4°C short term. Aliquot and store at -20°C long term. Avoid freeze/thaw cycles.
<b>Background</b>	Pseudokinase that plays a key role in TNF-induced necroptosis, a programmed cell death process.Activated following phosphorylation by RIPK3, leading to homotrimerization, localization to the plasma membrane and execution of programmed necrosis characterized by calcium influx and plasma membrane

Nanjing BYabscience technology Co.,Ltd



damage. Does not have protein kinase activity.

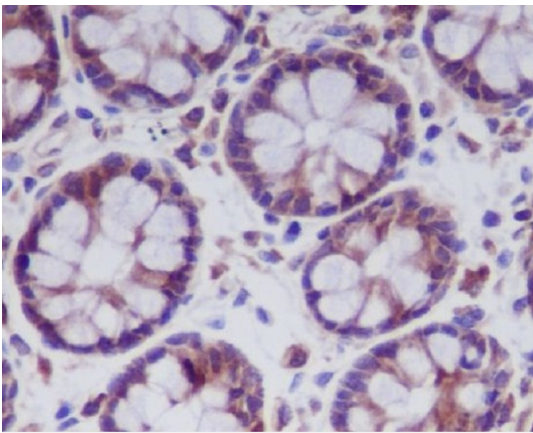
**matters needing attention**

Avoid repeated freezing and thawing!

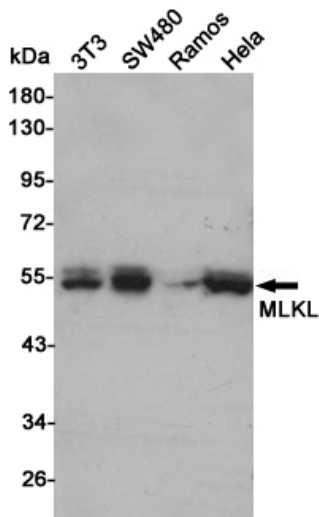
**Usage suggestions**

This product can be used in immunological reaction related experiments. For more information, please consult technical personnel.

## Products Images



Immunohistochemistry analysis of paraffin-embedded Human colon using MLKL antibody. High-pressure and temperature Sodium Citrate pH 6.0 was used for antigen retrieval.



Western blot analysis of MLKL in 3T3, SW480, Ramos and HeLa lysates using MLKL antibody.



Western blot analysis of MLKL in HUVEC lysates using MLKL antibody

