



CREB Rabbit mAb

Catalog No	BYab-17877
Isotype	IgG
Reactivity	Human,Mouse,Rat
Applications	WB,IHC-P,IP
Gene Name	CREB1
Alternative Names	CREB1; Cyclic AMP-responsive element-binding protein 1; CREB-1; cAMP-responsive element-binding protein 1
Research Field	Epigenetics and Nuclear Signaling
Product Categories	Primary antibody
Host	Rabbit
Molecular Weight	Calculated MW: 35 kDa; Observed MW: 43 kDa
Clonality	Monoclonal Antibody
Clonality No.	R08-4H9
Dilution	WB: 1/500-1/1000 IHC: 1/50-1/100 IP: 1/20
Immunogen	A synthetic peptide of human CREB
Purification	Affinity Purified
Conjugation	Unconjugated
Modification	Unmodified
Form	Liquid
Buffer System	50mM Tris-Glycine(pH 7.4), 0.15M NaCl, 40% Glycerol, 0.01% Sodium azide and 0.05% BSA
Concentration	1 mg/ml
Purity	≥90%
Storage	Store at 4°C short term. Aliquot and store at -20°C long term. Avoid freeze/thaw cycles.
Background	This gene encodes a transcription factor that is a member of the leucine zipper family of DNA binding proteins. This protein binds as a homodimer to the cAMP-responsive element, an octameric palindrome.

Nanjing BYabscience technology Co.,Ltd



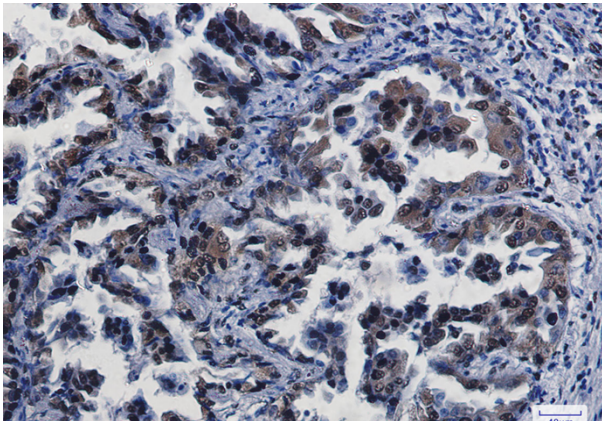
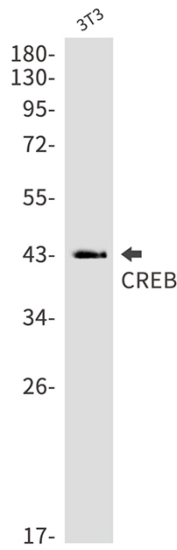
matters needing attention

Avoid repeated freezing and thawing!

Usage suggestions

This product can be used in immunological reaction related experiments. For more information, please consult technical personnel.

Products Images



Nanjing BYabscience technology Co.,Ltd

网址: www.njbybio.com

官方热线: 025-5229-8998

监督电话: 15950492658

