



Endo G Rabbit mAb

Catalog No	BYab-17861
Isotype	IgG
Reactivity	Human,Mouse,Rat
Applications	WB
Gene Name	ENDOG
Alternative Names	EndoG; EndonucleaseG; Mitochondrial endonuclease G; NUCG_HUMAN
Research Field	Cell Biology
Product Categories	Primary antibody
Host	Rabbit
Molecular Weight	Calculated MW: 33 kDa; Observed MW: 30 kDa
Clonality	Monoclonal Antibody
Clonality No.	R04-1X6
Dilution	WB: 1/500-1/1000
Immunogen	A synthesized peptide derived from human Endo G
Purification	Affinity Chromatography
Conjugation	Unconjugated
Modification	Unmodified
Form	Liquid
Buffer System	Rabbit IgG in phosphate buffered saline , pH 7.4, 150mM NaCl, 0.02% sodium azide and 50% glycerol.
Concentration	1 mg/ml
Purity	≥90%
Storage	Store at 4°C short term. Aliquot and store at -20°C long term. Avoid freeze/thaw cycles.
Background	Endo G is a nuclear encoded endonuclease that is localized in the mitochondrion. The encoded protein cleaves DNA at GC tracts. It is capable of generating the RNA primers required by DNA polymerase gamma to initiate replication of mitochondrial DNA.

Nanjing BYabscience technology Co.,Ltd



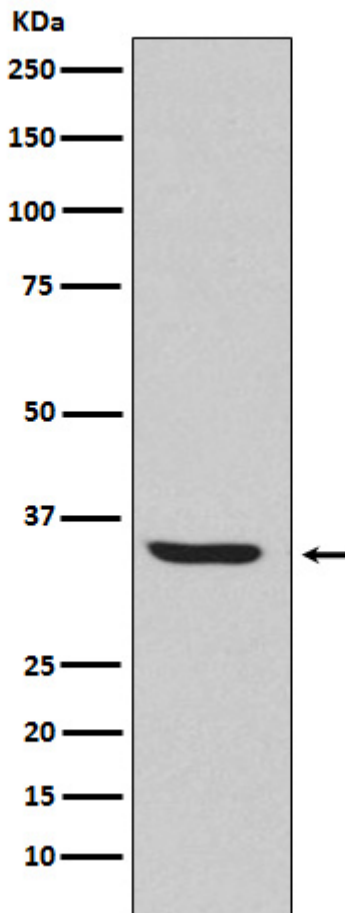
matters needing attention

Avoid repeated freezing and thawing!

Usage suggestions

This product can be used in immunological reaction related experiments. For more information, please consult technical personnel.

Products Images



Nanjing BYabscience technology Co.,Ltd