



Syndecan 1 Rabbit mAb

Catalog No	BYab-17781
Isotype	IgG
Reactivity	Human,Mouse,Rat
Applications	WB,IHC-P,ICC/IF
Gene Name	SDC1
Alternative Names	SDC1; SDC; Syndecan-1; SYND1; CD138
Research Field	Cell Biology
Product Categories	Primary antibody
Host	Rabbit
Molecular Weight	Calculated MW: 32 kDa; Observed MW: 35 kDa
Clonality	Monoclonal Antibody
Clonality No.	R07-9H1
Dilution	WB: 1/500-1/1000 IHC: 1/50-1/100 IF: 1/50-1/200
Immunogen	A synthesized peptide derived from human Syndecan 1
Purification	Affinity Chromatography
Conjugation	Unconjugated
Modification	Unmodified
Form	Liquid
Buffer System	Rabbit IgG in phosphate buffered saline , pH 7.4, 150mM NaCl, 0.02% sodium azide and 50%
Concentration	1 mg/ml
Purity	≥90%
Storage	Store at 4°C short term. Aliquot and store at -20°C long term. Avoid freeze/thaw cycles.
Background	Cell surface proteoglycan that bears both heparan sulfate and chondroitin sulfate and that links the cytoskeleton to the interstitial matrix.

Nanjing BYabscience technology Co.,Ltd



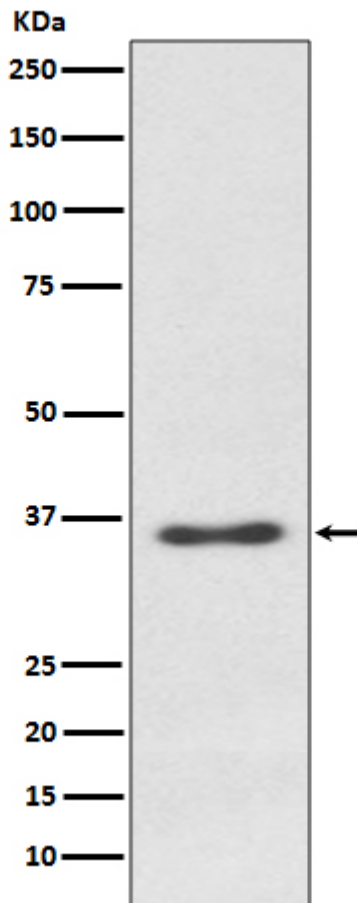
matters needing attention

Avoid repeated freezing and thawing!

Usage suggestions

This product can be used in immunological reaction related experiments. For more information, please consult technical personnel.

Products Images



Nanjing BYabscience technology Co.,Ltd