



STING Rabbit pAb

Catalog No	BYab-17777
Isotype	IgG
Reactivity	Human
Applications	WB,ICC/IF,FC
Gene Name	STING1
Alternative Names	ERIS; MITA; MPYS; SAVI; NET23; STING; hMITA; hSTING; STING-beta; Transmembrane Protein 173
Research Field	Immunology
Product Categories	Primary antibody
Host	Rabbit
Molecular Weight	Calculated MW: 42 kDa; Observed MW: 37 kDa
Clonality	Polyclonal Antibody
Clonality No.	-
Dilution	WB: 1/500-1/1000 IF: 1/50-1/200 FC: 1/50-1/100
Immunogen	A synthesized peptide derived from human TMEM173
Purification	Affinity Chromatography
Conjugation	Unconjugated
Modification	Unmodified
Form	Liquid
Buffer System	Rabbit IgG in phosphate buffered saline , pH 7.4, 150mM NaCl, 0.02% sodium azide and 50% glycerol.
Concentration	1 mg/ml
Purity	≥90%
Storage	Store at 4°C short term. Aliquot and store at -20°C long term. Avoid freeze/thaw cycles.
Background	Facilitator of innate immune signaling that promotes the production of type I interferon (IFN-alpha and IFN-beta). Innate immune response is triggered in response to non-CpG double-stranded DNA from viruses and bacteria delivered to the cytoplasm.

Nanjing BYabscience technology Co.,Ltd



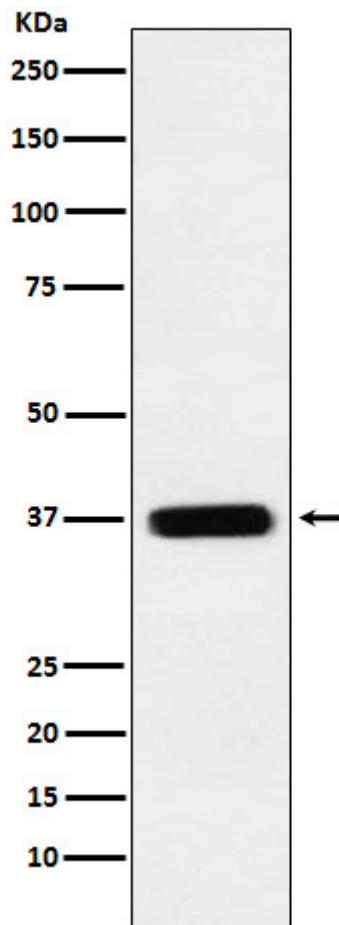
matters needing attention

Avoid repeated freezing and thawing!

Usage suggestions

This product can be used in immunological reaction related experiments. For more information, please consult technical personnel.

Products Images



Nanjing BYabscience technology Co.,Ltd