



# Phospho-Tau (Ser199) Rabbit mAb

<b>Catalog No</b>	BYab-17774
<b>Isotype</b>	IgG
<b>Reactivity</b>	Human,Mouse,Rat
<b>Applications</b>	WB
<b>Gene Name</b>	MAPT
<b>Alternative Names</b>	MAPT; Microtubule-associated protein tau; MTBT1; Neurofibrillary tangle protein; Paired helical filament-tau; PHF-tau
<b>Research Field</b>	Neuroscience
<b>Product Categories</b>	Primary antibody
<b>Host</b>	Rabbit
<b>Molecular Weight</b>	Calculated MW:79kDa;Observed MW:50-70kDa
<b>Clonality</b>	Monoclonal Antibody
<b>Clonality No.</b>	R82-2D-1
<b>Dilution</b>	WB: 1/500-1/1000
<b>Immunogen</b>	A synthesized peptide derived from human Phospho-Tau (S199)
<b>Purification</b>	Affinity Chromatography
<b>Conjugation</b>	Unconjugated
<b>Modification</b>	Phosphorylated
<b>Form</b>	Liquid
<b>Buffer System</b>	Liquid in PBS , pH 7.4, 150mM NaCl, 0.02% sodium azide and 50% glycerol.
<b>Concentration</b>	1 mg/ml
<b>Purity</b>	≥90%
<b>Storage</b>	Store at 4°C short term. Aliquot and store at -20°C long term. Avoid freeze/thaw cycles.
<b>Background</b>	Promotes microtubule assembly and stability, and might be involved in the establishment and maintenance of neuronal polarity. The C-terminus binds axonal microtubules while the N-terminus binds neural plasma membrane components, suggesting that tau functions as a linker protein between both.

Nanjing BYabscience technology Co.,Ltd



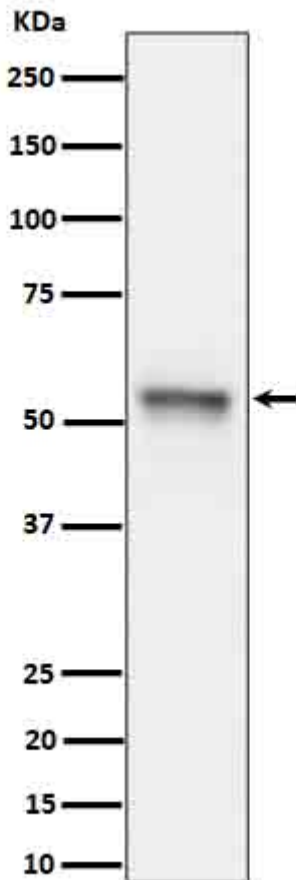
**matters needing attention**

Avoid repeated freezing and thawing!

**Usage suggestions**

This product can be used in immunological reaction related experiments. For more information, please consult technical personnel.

## Products Images



Nanjing BYabscience technology Co.,Ltd