



Phospho-Tau (Ser404) Rabbit mAb

Catalog No	BYab-17773
Isotype	IgG
Reactivity	Human,Mouse,Rat
Applications	WB,IHC-P,ICC/IF,IP
Gene Name	MAPT
Alternative Names	MAPT; Microtubule-associated protein tau; MTBT1; Neurofibrillary tangle protein; Paired helical filament-tau; PHF-tau
Research Field	Neuroscience
Product Categories	Primary antibody
Host	Rabbit
Molecular Weight	Calculated MW: 79 kDa;Observed MW:50-70kDa
Clonality	Monoclonal Antibody
Clonality No.	R18-3U-7
Dilution	WB: 1/500-1/1000 IHC: 1/100-1/200 IF: 1/50-1/200 IP: 1/50
Immunogen	A synthesized peptide derived from human Phospho-Tau (S404)
Purification	Affinity Chromatography
Conjugation	Unconjugated
Modification	Phosphorylated
Form	Liquid
Buffer System	Liquid in PBS , pH 7.4, 150mM NaCl, 0.02% sodium azide and 50% glycerol.
Concentration	1 mg/ml
Purity	≥90%
Storage	Store at 4°C short term. Aliquot and store at -20°C long term. Avoid freeze/thaw cycles.
Background	Promotes microtubule assembly and stability, and might be involved in the establishment and maintenance of neuronal polarity. The C-terminus binds axonal microtubules while the N-terminus binds neural plasma membrane components, suggesting that tau functions as a linker protein between both.

Nanjing BYabscience technology Co.,Ltd



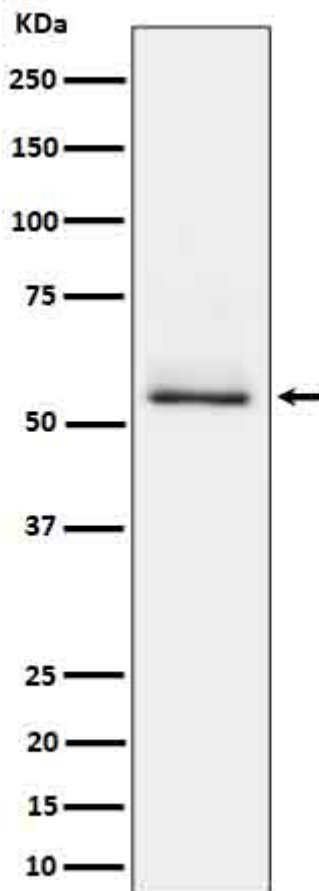
matters needing attention

Avoid repeated freezing and thawing!

Usage suggestions

This product can be used in immunological reaction related experiments. For more information, please consult technical personnel.

Products Images



Nanjing BYabscience technology Co.,Ltd