



alpha Tubulin Rabbit mAb

Catalog No	BYab-17771
Isotype	IgG
Reactivity	Human,Mouse,Rat
Applications	WB
Gene Name	TUB1
Alternative Names	Tubulin alpha-1 chain
Research Field	Tags & Cell Markers
Product Categories	Primary antibody
Host	Rabbit
Molecular Weight	Calculated MW: 50 kDa; Observed MW: 50 kDa
Clonality	Monoclonal Antibody
Clonality No.	R04-7B2
Dilution	WB: 1/500-1/1000
Immunogen	A synthetic peptide of Saccharomyces cerevisiae alpha Tubulin
Purification	Affinity Purified
Conjugation	Unconjugated
Modification	Unmodified
Form	Liquid
Buffer System	50mM Tris-Glycine(pH 7.4), 0.15M NaCl, 40% Glycerol, 0.01% Sodium azide and 0.05% BSA
Concentration	1 mg/ml
Purity	≥90%
Storage	Store at 4°C short term. Aliquot and store at -20°C long term. Avoid freeze/thaw cycles.
Background	Tubulin is the major constituent of microtubules. It binds two moles of GTP, one at an exchangeable site on the beta chain and one at a non-exchangeable site on the alpha chain.

Nanjing BYabscience technology Co.,Ltd



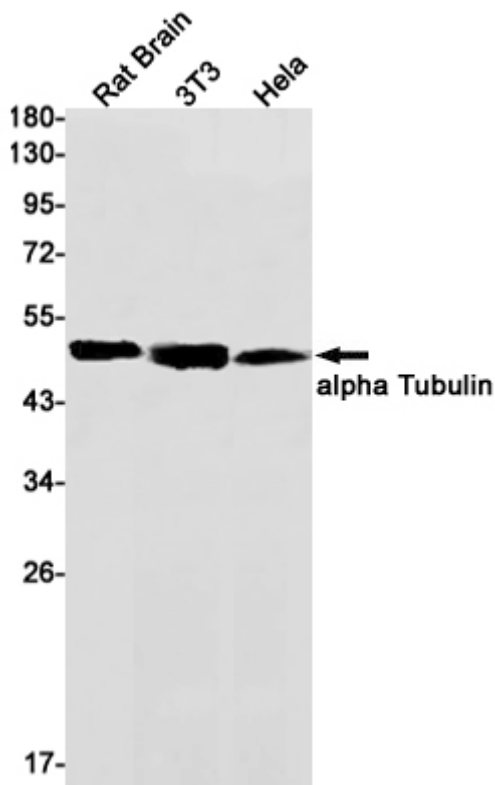
matters needing attention

Avoid repeated freezing and thawing!

Usage suggestions

This product can be used in immunological reaction related experiments. For more information, please consult technical personnel.

Products Images



Nanjing BYabscience technology Co.,Ltd

网址: www.njbybio.com

官方热线: 025-5229-8998

监督电话: 15950492658