



DDDDK-Tag(binds to flag sequence) mouse mAb(12M11)

Catalog No	BYab-17217
Isotype	IgG
Reactivity	Species independent
Applications	WB;ELISA;IP;IF;CoIP
Gene Name	Flag tag; Flag-tag,DDDDK TAG, DDDDK-TAG, DYKDDDDK tag,DYKDDDDK-tag
Protein Name	
Immunogen	Synthetic Peptide of Flag-Tag
Specificity	The antibody detects C-terminal, internal, and N-terminal Flag-tag fusion proteins.
Formulation	PBS, pH 7.4, containing 0.5%BSA, 0.02% sodium azide as Preservative and 50% Glycerol.
Source	Mouse VH IgG1 and VL Kappa was expressed from 293F cells
Purification	Protein A purified
Dilution	WB: 1:10000-50000 ELISA 1:20000-50000 IP:100-1:200 IF: 1:1000 -3000
Concentration	1 mg/ml
Purity	≥90%
Storage Stability	-20°C/1 year
Synonyms	
Observed Band	
Cell Pathway	
Tissue Specificity	
Function	
Background	The DYKDDDDK peptide (Flag-tag) is a polypeptide protein tag that can be added to a protein using recombinant DNA technology. It can be used for affinity chromatography, and then used to separate recombinant, over expressed protein from wild-type protein expressed by the host organism. It can also be used in the isolation of protein complexes with multiple subunits.

Nanjing BYabscience technology Co.,Ltd



matters needing attention

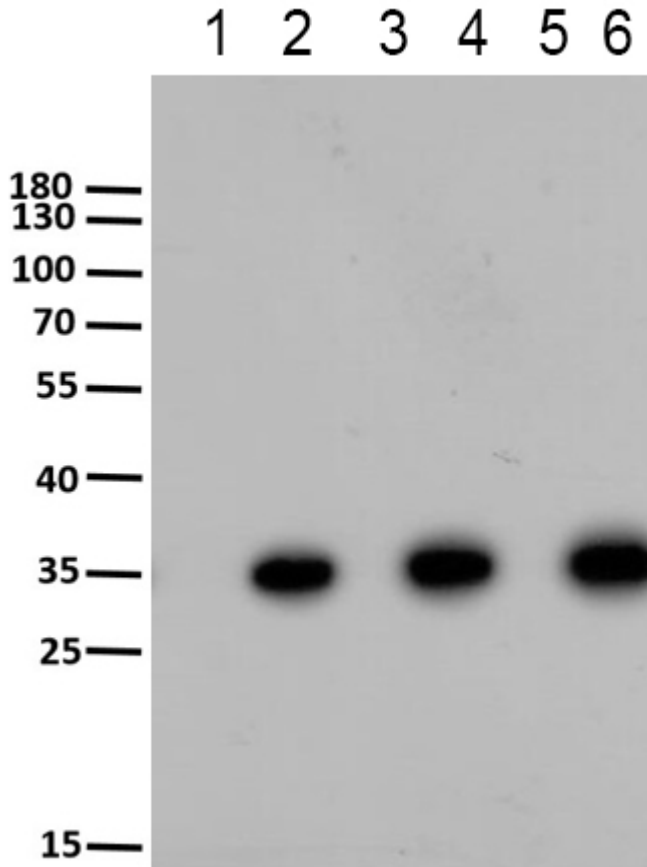
Avoid repeated freezing and thawing!

Usage suggestions

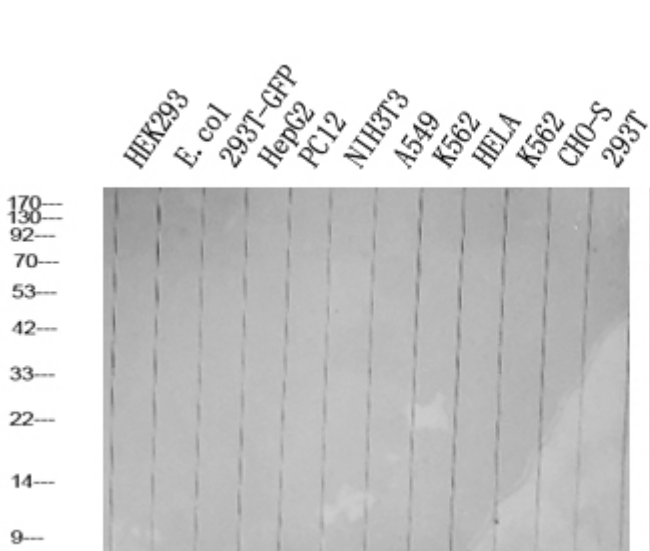
This product can be used in immunological reaction related experiments. For more information, please consult technical personnel.



Products Images

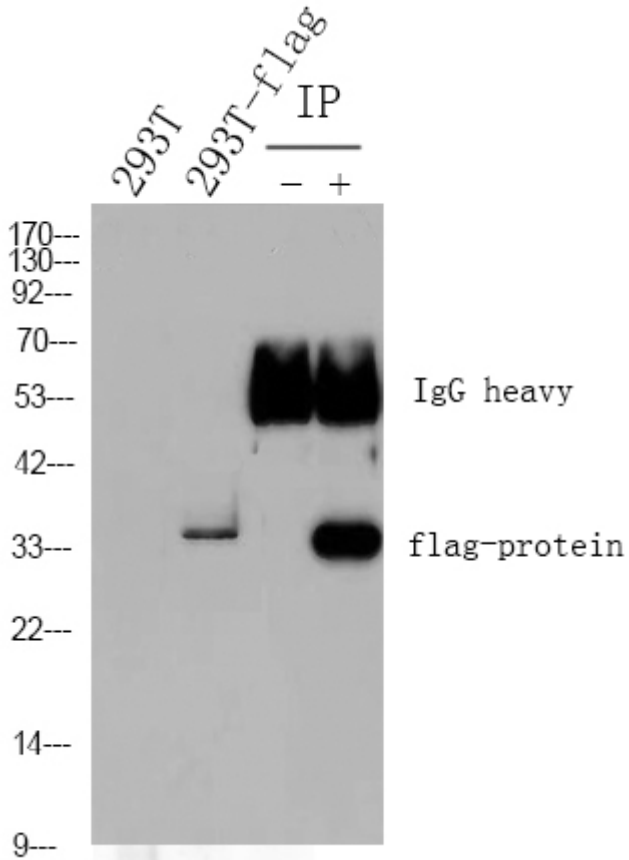


Western Blot analysis of 293F cells transfected or non-transfected DDDK-tag expression vector by primary antibody at 1:10000 dilution. Lane 1 3 5: 293F cell lysis. Lane 2 4 6: transfected DDDK-tag expression vector. Secondary antibody(catalog#:RS23920) was diluted at 1:10000

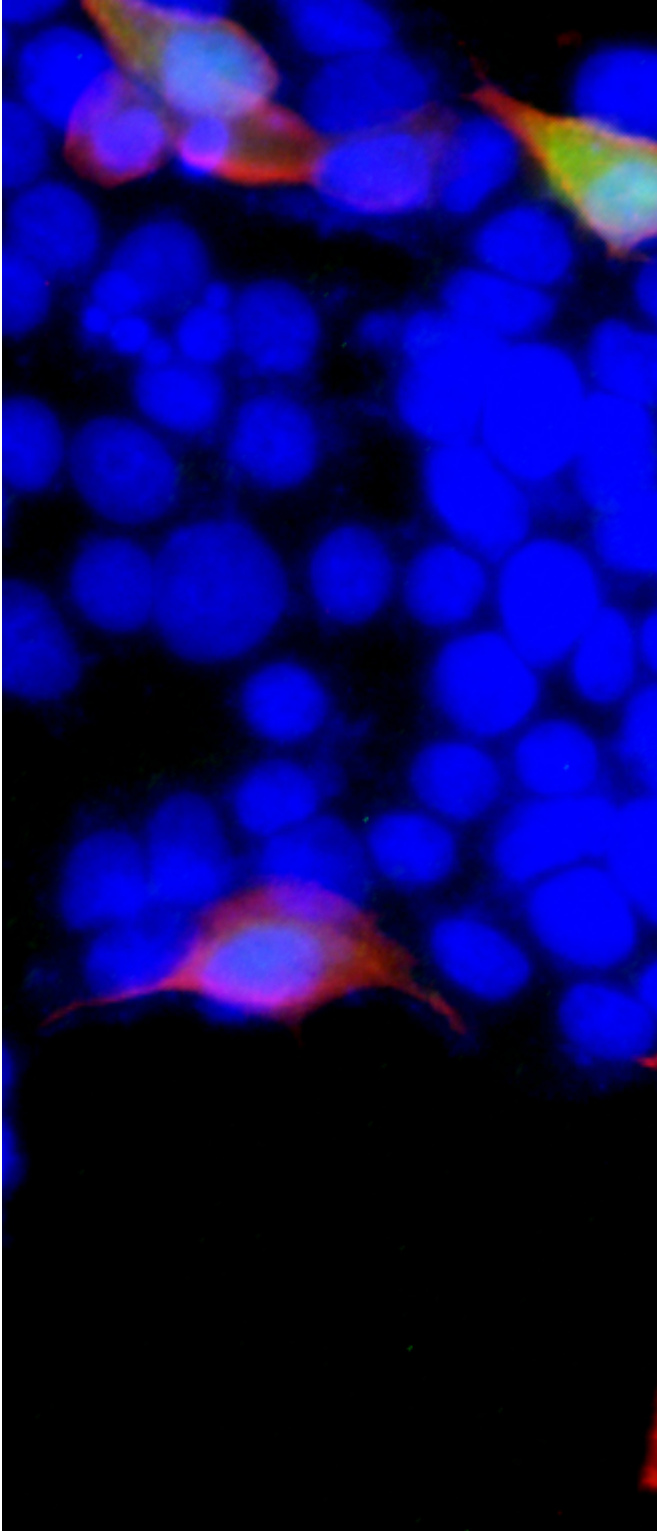


Western Blot analysis of various cells using primary antibody at 1:10000 dilution. Secondary antibody(catalog#:RS0001) was diluted at 1:10000

Nanjing BYabs science technology Co.,Ltd



1) Input: 293T transfected N-flag protein Lysate 2) IP
product: IP dilute 1: 200, 293T transfected N-flag
protein Lysate Western blot analysis: primary
antibody : 1:10000 Secondary antibody: Goat
anti-Mouse IgG(RS0001), 1: 5000



Immunofluorescence analysis of 293T transfected FLAG and GFP tag protein. 1, FLAG primary Antibody(red YM3808) was diluted at 1:1000(4°C overnight), GFP primary Antibody(green YN5582) was diluted at 1:1000(4°C overnight),