



# NTE Polyclonal Antibody

<b>Catalog No</b>	BYab-12859
<b>Isotype</b>	IgG
<b>Reactivity</b>	Human;Mouse;Rat
<b>Applications</b>	WB;IHC;IF;ELISA
<b>Gene Name</b>	PNPLA6
<b>Protein Name</b>	Neuropathy target esterase
<b>Immunogen</b>	The antiserum was produced against synthesized peptide derived from the Internal region of human PNPLA6. AA range:1031-1080
<b>Specificity</b>	NTE Polyclonal Antibody detects endogenous levels of NTE protein.
<b>Formulation</b>	Liquid in PBS containing 50% glycerol, 0.5% BSA and 0.02% sodium azide.
<b>Source</b>	Polyclonal, Rabbit,IgG
<b>Purification</b>	The antibody was affinity-purified from rabbit antiserum by affinity-chromatography using epitope-specific immunogen.
<b>Dilution</b>	WB: 1/500 - 1/2000. IHC-p: 1/100-1/300. ELISA: 1/20000.. IF 1:50-200
<b>Concentration</b>	1 mg/ml
<b>Purity</b>	≥90%
<b>Storage Stability</b>	-20°C/1 year
<b>Synonyms</b>	PNPLA6; NTE; Neuropathy target esterase; Patatin-like phospholipase domain-containing protein 6
<b>Observed Band</b>	150kD
<b>Cell Pathway</b>	Endoplasmic reticulum membrane ; Single-pass type III membrane protein .
<b>Tissue Specificity</b>	Expressed in brain, placenta, kidney, neuron and skeletal muscle. Expressed in the developing eye, pituitary and brain.
<b>Function</b>	catalytic activity:2-lysophosphatidylcholine + H(2)O = glycerophosphocholine + a carboxylate..disease:Defects in PNPLA6 are the cause of spastic paraplegia autosomal recessive type 39 (SPG39) [MIM:612020]; also known as NTE-related motor neuron disorder (NTEMND). Spastic paraplegia is a neurodegenerative disorder characterized by a slow, gradual, progressive weakness and spasticity of the lower limbs. Rate of progression and the severity of symptoms are quite variable. Initial symptoms may include difficulty with balance, weakness and stiffness in the legs, muscle spasms, and dragging the toes when walking. In some forms of the disorder, bladder symptoms (such as incontinence) may appear, or the weakness and stiffness may spread to other parts of the body.

Nanjing BYabscience technology Co.,Ltd



SPG39 is associated with a motor axonopathy affecting upper and lower limbs and resulting in progressive wasting of distal upper and

**Background**

This gene encodes a phospholipase that deacetylates intracellular phosphatidylcholine to produce glycerophosphocholine. It is thought to function in neurite outgrowth and process elongation during neuronal differentiation. The protein is anchored to the cytoplasmic face of the endoplasmic reticulum in both neurons and non-neuronal cells. Mutations in this gene result in autosomal recessive spastic paraplegia, and the protein is the target for neurodegeneration induced by organophosphorus compounds and chemical warfare agents. Multiple transcript variants encoding different isoforms have been found for this gene. [provided by RefSeq, Oct 2009],

**matters needing attention**

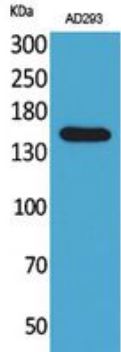
Avoid repeated freezing and thawing!

**Usage suggestions**

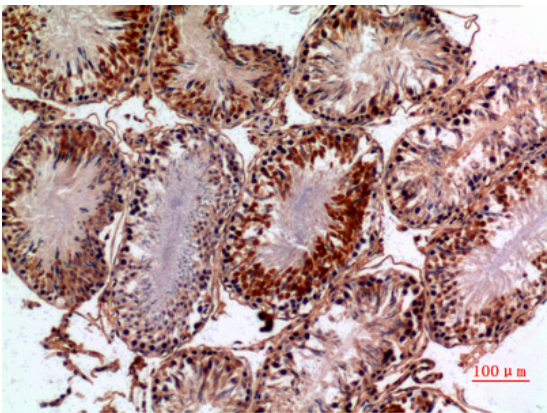
This product can be used in immunological reaction related experiments. For more information, please consult technical personnel.



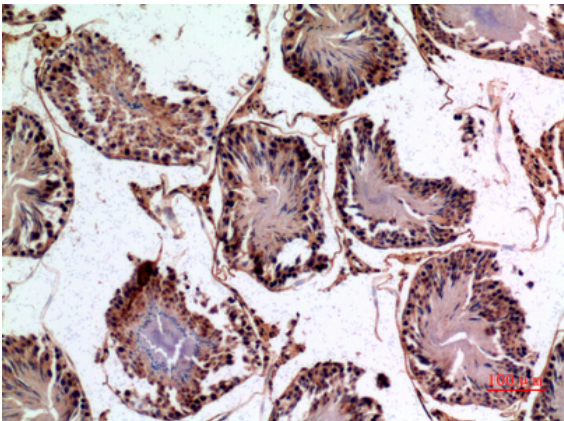
## Products Images



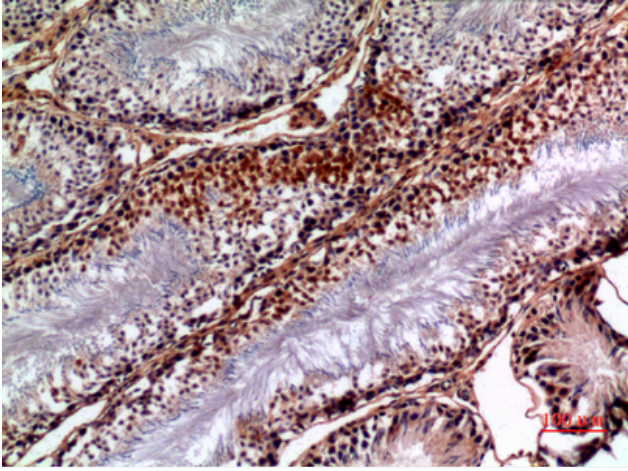
Western Blot analysis of AD293 cells using NTE Polyclonal Antibody. Secondary antibody(catalog#:RS0002) was diluted at 1:20000



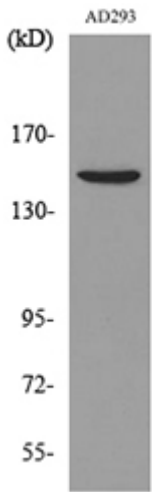
Immunohistochemical analysis of paraffin-embedded rat-testis, antibody was diluted at 1:100



Immunohistochemical analysis of paraffin-embedded rat-testis, antibody was diluted at 1:100



Immunohistochemical analysis of paraffin-embedded rat-testis, antibody was diluted at 1:100



Western blot analysis of lysate from AD293 cells, using PNPLA6 Antibody.