



TSSC1 Polyclonal Antibody

Catalog No	BYab-00540
Isotype	IgG
Reactivity	Human;Mouse;Rat;Monkey
Applications	WB;ELISA
Gene Name	TSSC1
Protein Name	Protein TSSC1
Immunogen	The antiserum was produced against synthesized peptide derived from human TSSC1. AA range:291-340
Specificity	TSSC1 Polyclonal Antibody detects endogenous levels of TSSC1 protein.
Formulation	Liquid in PBS containing 50% glycerol, 0.5% BSA and 0.02% sodium azide.
Source	Polyclonal, Rabbit,IgG
Purification	The antibody was affinity-purified from rabbit antiserum by affinity-chromatography using epitope-specific immunogen.
Dilution	Western Blot: 1/500 - 1/2000. ELISA: 1/10000. Not yet tested in other applications.
Concentration	1 mg/ml
Purity	≥90%
Storage Stability	-20°C/1 year
Synonyms	TSSC1; Protein TSSC1; Tumor-suppressing STF cDNA 1 protein; Tumor-suppressing subchromosomal transferable fragment candidate gene 1 protein
Observed Band	48kD
Cell Pathway	Golgi apparatus, trans-Golgi network .
Tissue Specificity	Cerebellum,Colon,
Function	similarity:Contains 5 WD repeats.,
Background	This gene has been reported in PMID 9403053 as one of several tumor-suppressing subtransferable fragments located in the imprinted gene domain of 11p15.5, an important tumor-suppressor gene region. Alterations in this region have been associated with the Beckwith-Wiedemann syndrome, Wilms tumor, rhabdomyosarcoma, adrenocortical carcinoma, and lung, ovarian, and breast cancer. Alignment of this gene to genomic sequence data suggests that

Nanjing BYabscience technology Co.,Ltd



this gene resides on chromosome 2 rather than chromosome 11. [provided by RefSeq, Dec 2008],

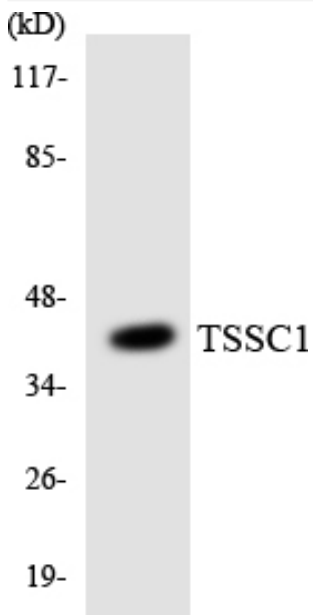
matters needing attention

Avoid repeated freezing and thawing!

Usage suggestions

This product can be used in immunological reaction related experiments. For more information, please consult technical personnel.

Products Images



Western blot analysis of the lysates from HepG2 cells using TSSC1 antibody.