



RIP2 Polyclonal Antibody

Catalog No	BYab-00520
Isotype	IgG
Reactivity	Human;Mouse
Applications	WB;IHC;IF;ELISA
Gene Name	RIPK2
Protein Name	Receptor-interacting serine/threonine-protein kinase 2
Immunogen	The antiserum was produced against synthesized peptide derived from human RIPK2. AA range:146-195
Specificity	RIP2 Polyclonal Antibody detects endogenous levels of RIP2 protein.
Formulation	Liquid in PBS containing 50% glycerol, 0.5% BSA and 0.02% sodium azide.
Source	Polyclonal, Rabbit,IgG
Purification	The antibody was affinity-purified from rabbit antiserum by affinity-chromatography using epitope-specific immunogen.
Dilution	WB: 1/500 - 1/2000. IHC: 1/100 - 1/300. ELISA: 1/40000.. IF 1:50-200
Concentration	1 mg/ml
Purity	≥90%
Storage Stability	-20°C/1 year
Synonyms	RIPK2; CARDIAK; RICK; RIP2; Receptor-interacting serine/threonine-protein kinase 2; CARD-containing interleukin-1 beta-converting enzyme-associated kinase; CARD-containing IL-1 beta ICE-kinase; RIP-like-interacting CLARP kinase; Receptor-in
Observed Band	61kD
Cell Pathway	Cytoplasm .
Tissue Specificity	Detected in heart, brain, placenta, lung, peripheral blood leukocytes, spleen, kidney, testis, prostate, pancreas and lymph node.
Function	catalytic activity:ATP + a protein = ADP + a phosphoprotein.,function:Activates pro-caspase-1 and pro-caspase-8. Potentiates CASP8-mediated apoptosis. Activates NF-kappa-B.,PTM:Autophosphorylated. Phosphorylated upon DNA damage, probably by ATM or ATR.,similarity:Belongs to the protein kinase superfamily. TKL Ser/Thr protein kinase family.,similarity:Contains 1 CARD domain.,similarity:Contains 1 protein kinase domain.,subunit:Binds to CFLAR/CLARP and CASP1 via their CARD domains. Binds to BIRC3/c-IAP1 and

Nanjing BYabscience technology Co.,Ltd



BIRC2/c-IAP2, TRAF1, TRAF2, TRAF5 and TRAF6. May be a component of both the TNFRSF1A and TNFRSF5/CD40 receptor complex.,tissue specificity:Detected in heart, brain, placenta, lung, peripheral blood leukocytes, spleen, kidney, testis, prostate, pancreas and lymph node.,

Background

This gene encodes a member of the receptor-interacting protein (RIP) family of serine/threonine protein kinases. The encoded protein contains a C-terminal caspase activation and recruitment domain (CARD), and is a component of signaling complexes in both the innate and adaptive immune pathways. It is a potent activator of NF-kappaB and inducer of apoptosis in response to various stimuli. [provided by RefSeq, Jul 2008],

matters needing attention

Avoid repeated freezing and thawing!

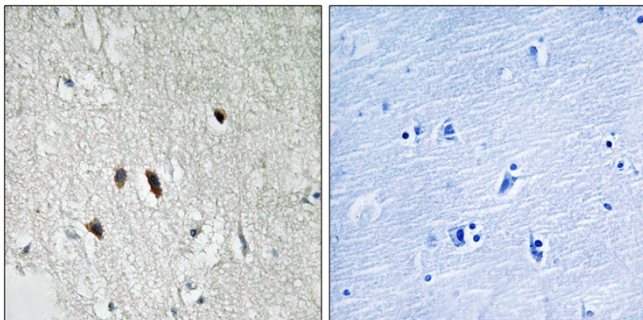
Usage suggestions

This product can be used in immunological reaction related experiments. For more information, please consult technical personnel.

Products Images

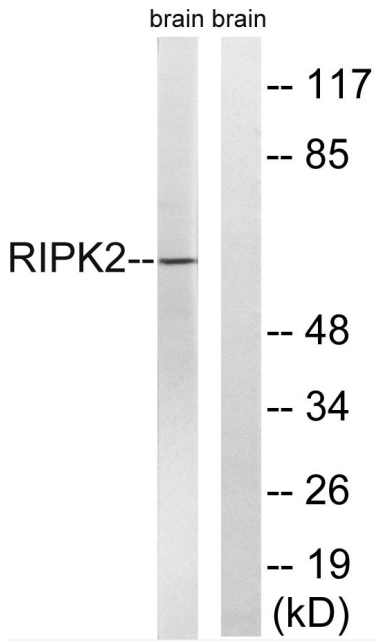


Western blot analysis of 3T3 lysis using RIP2 antibody. Antibody was diluted at 1:500



Immunohistochemistry analysis of paraffin-embedded human brain tissue, using RIPK2 Antibody. The picture on the right is blocked with the synthesized peptide.

Nanjing BYabscience technology Co.,Ltd



Western blot analysis of lysates from rat brain cells, using RIPK2 Antibody. The lane on the right is blocked with the synthesized peptide.