



Rad51B Polyclonal Antibody

Catalog No	BYab-00511
Isotype	IgG
Reactivity	Human;Mouse;Monkey
Applications	WB;IHC;IF;ELISA
Gene Name	RAD51B
Protein Name	DNA repair protein RAD51 homolog 2
Immunogen	The antiserum was produced against synthesized peptide derived from human RAD51L1. AA range:201-250
Specificity	Rad51B Polyclonal Antibody detects endogenous levels of Rad51B protein.
Formulation	Liquid in PBS containing 50% glycerol, 0.5% BSA and 0.02% sodium azide.
Source	Polyclonal, Rabbit,IgG
Purification	The antibody was affinity-purified from rabbit antiserum by affinity-chromatography using epitope-specific immunogen.
Dilution	WB: 1/500 - 1/2000. IHC: 1/100 - 1/300. ELISA: 1/40000.. IF 1:50-200
Concentration	1 mg/ml
Purity	≥90%
Storage Stability	-20°C/1 year
Synonyms	RAD51B; RAD51L1; REC2; DNA repair protein RAD51 homolog 2; R51H2; RAD51 homolog B; Rad51B; RAD51-like protein 1
Observed Band	45kD
Cell Pathway	Nucleus .
Tissue Specificity	Expressed in a wide range of tissues.
Function	disease:A chromosomal aberration involving RAD51L1 is found in pulmonary chondroid hamartoma. Translocation t(6;14)(p21;q23-24) with HMGA1.,disease:A chromosomal aberration involving RAD51L1 is found in uterine leiomyoma (UL) [MIM:150699]. Translocation t(12;14)(q15;q23-24) with HMGA2.,function:Involved in the homologous recombination repair (HRR) pathway of double-stranded DNA breaks arising during DNA replication or induced by DNA-damaging agents. May promote the assembly of presynaptic RAD51 nucleoprotein filaments. The RAD51B-RAD51C dimer exhibits single-stranded DNA-dependent ATPase activity. The BCDX2 complex binds single-stranded DNA, single-stranded gaps in duplex DNA and specifically to nicks in duplex DNA.,similarity:Belongs to the recA

Nanjing BYabscience technology Co.,Ltd



family. RAD51 subfamily. subunit: Interacts with RAD51C. Part of a BCDX2 complex consisting of RAD51B, RAD51C, RAD51D and XRCC2. Part of a compl

Background

RAD51 paralog B(RAD51B) Homo sapiens The protein encoded by this gene is a member of the RAD51 protein family. RAD51 family members are evolutionarily conserved proteins essential for DNA repair by homologous recombination. This protein has been shown to form a stable heterodimer with the family member RAD51C, which further interacts with the other family members, such as RAD51, XRCC2, and XRCC3. Overexpression of this gene was found to cause cell cycle G1 delay and cell apoptosis, which suggested a role of this protein in sensing DNA damage. Rearrangements between this locus and high mobility group AT-hook 2 (HMGA2, GeneID 8091) have been observed in uterine leiomyomata. [provided by RefSeq, Mar 2016],

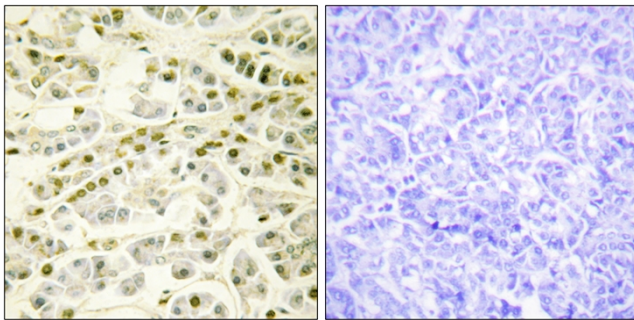
matters needing attention

Avoid repeated freezing and thawing!

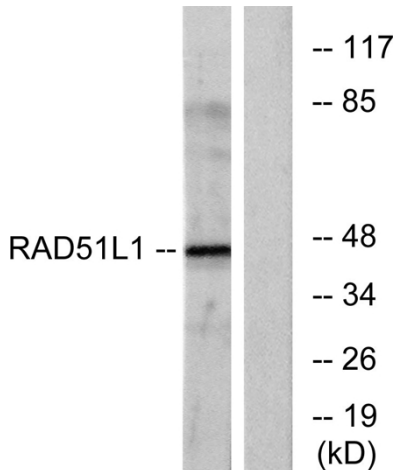
Usage suggestions

This product can be used in immunological reaction related experiments. For more information, please consult technical personnel.

Products Images



Immunohistochemistry analysis of paraffin-embedded human pancreas tissue, using RAD51L1 Antibody. The picture on the right is blocked with the synthesized peptide.



Western blot analysis of lysates from COS7 cells, using RAD51L1 Antibody. The lane on the right is blocked with the synthesized peptide.