



# Rad23A Polyclonal Antibody

<b>Catalog No</b>	BYab-00507
<b>Isotype</b>	IgG
<b>Reactivity</b>	Human;Mouse
<b>Applications</b>	WB;IHC
<b>Gene Name</b>	RAD23A
<b>Protein Name</b>	UV excision repair protein RAD23 homolog A
<b>Immunogen</b>	The antiserum was produced against synthesized peptide derived from human RAD23A. AA range:91-140
<b>Specificity</b>	Rad23A Polyclonal Antibody detects endogenous levels of Rad23A protein.
<b>Formulation</b>	Liquid in PBS containing 50% glycerol, 0.5% BSA and 0.02% sodium azide.
<b>Source</b>	Polyclonal, Rabbit,IgG
<b>Purification</b>	The antibody was affinity-purified from rabbit antiserum by affinity-chromatography using epitope-specific immunogen.
<b>Dilution</b>	WB 1:500-2000;IHC-p 1:50-300
<b>Concentration</b>	1 mg/ml
<b>Purity</b>	≥90%
<b>Storage Stability</b>	-20°C/1 year
<b>Synonyms</b>	RAD23A; UV excision repair protein RAD23 homolog A; HR23A; hHR23A
<b>Observed Band</b>	48kD
<b>Cell Pathway</b>	Nucleus.
<b>Tissue Specificity</b>	Brain,Pancreas,Testis,
<b>Function</b>	domain:The ubiquitin-like domain mediates interaction with MJD.,function:Involved in postreplication repair of UV-damaged DNA. Postreplication repair functions in gap-filling of a daughter strand on replication of damaged DNA.,PTM:Phosphorylated upon DNA damage, probably by ATM or ATR.,similarity:Belongs to the RAD23 family.,similarity:Contains 1 ubiquitin-like domain.,similarity:Contains 2 UBA domains.,subunit:Interacts with MJD. Interacts with HIV-1 Vpr.,
<b>Background</b>	The protein encoded by this gene is one of two human homologs of <i>Saccharomyces cerevisiae</i> Rad23, a protein involved in nucleotide excision repair. Proteins in this family have a modular domain structure consisting of an

Nanjing BYabscience technology Co.,Ltd



ubiquitin-like domain (UbL), ubiquitin-associated domain 1 (UbA1), XPC-binding domain and UbA2. The protein encoded by this gene plays an important role in nucleotide excision repair and also in delivery of polyubiquitinated proteins to the proteasome. Alternative splicing results in multiple transcript variants encoding multiple isoforms. [provided by RefSeq, Jun 2012],

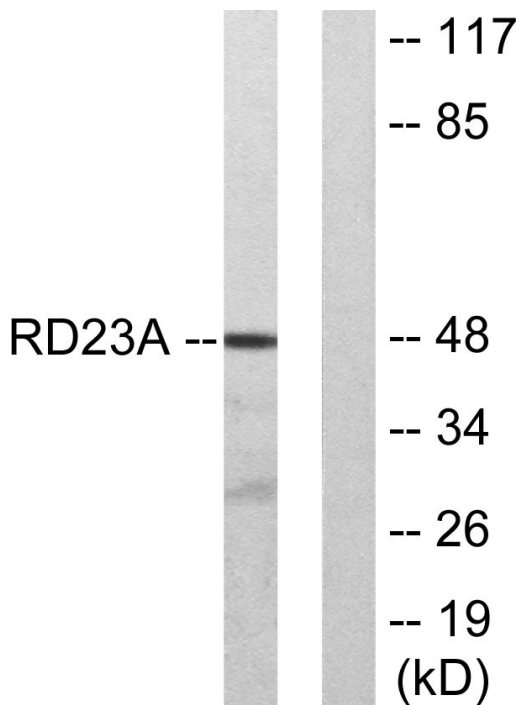
**matters needing attention**

Avoid repeated freezing and thawing!

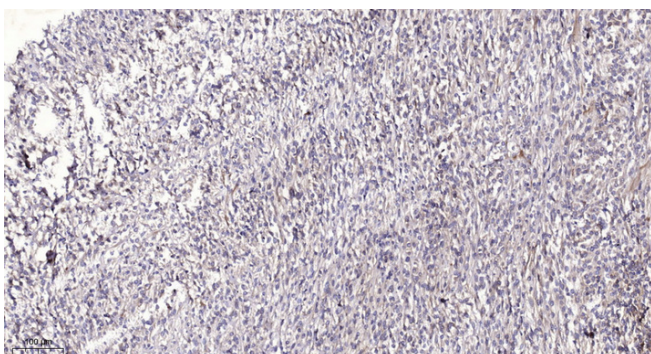
**Usage suggestions**

This product can be used in immunological reaction related experiments. For more information, please consult technical personnel.

## Products Images



Western blot analysis of lysates from LOVO cells, using RAD23A Antibody. The lane on the right is blocked with the synthesized peptide.



Immunohistochemical analysis of paraffin-embedded human Colon cancer. 1, Antibody was diluted at 1:200(4° overnight). 2, Tris-EDTA,pH9.0 was used for antigen retrieval. 3,Secondary antibody was diluted at 1:200(room temperature, 45min).

Nanjing BYabscience technology Co.,Ltd