



PMS2/PMS2CL Polyclonal Antibody

Catalog No	BYab-00498
Isotype	IgG
Reactivity	Human;Rat;Mouse;
Applications	IHC;IF;ELISA
Gene Name	PMS2/PMS2CL
Protein Name	Mismatch repair endonuclease PMS2/Protein PMS2CL
Immunogen	The antiserum was produced against synthesized peptide derived from human PMS2CL. AA range:125-174
Specificity	PMS2/PMS2CL Polyclonal Antibody detects endogenous levels of PMS2/PMS2CL protein.
Formulation	Liquid in PBS containing 50% glycerol, 0.5% BSA and 0.02% sodium azide.
Source	Polyclonal, Rabbit,IgG
Purification	The antibody was affinity-purified from rabbit antiserum by affinity-chromatography using epitope-specific immunogen.
Dilution	IHC: 1/100 - 1/300. ELISA: 1/5000.. IF 1:50-200
Concentration	1 mg/ml
Purity	≥90%
Storage Stability	-20°C/1 year
Synonyms	PMS2CL; Protein PMS2CL; PMS2-C terminal-like protein; PMS2; PMSL2; Mismatch repair endonuclease PMS2; DNA mismatch repair protein PMS2; PMS1 protein homolog 2
Observed Band	
Cell Pathway	mismatch repair complex,
Tissue Specificity	Fetal brain,Testis,
Function	caution:According to PubMed:15077197, it is a pseudogene. However, a peptide specific to this protein was identified by mass spectrometry (PubMed:17525332). Given that the product described by PubMed:15077197 is located downstream and on another frame of the transcript, it may explain why PubMed:15256438 could not detect this protein on a Western blot.,PTM:Phosphorylated upon DNA damage, probably by ATM or ATR.,sequence caution:Wrong choice of transcript.,similarity:Belongs to the DNA mismatch repair mutL/hexB family.,

Nanjing BYabscience technology Co.,Ltd



Background

caution:According to PubMed:15077197, it is a pseudogene. However, a peptide specific to this protein was identified by mass spectrometry (PubMed:17525332). Given that the product described by PubMed:15077197 is located downstream and on another frame of the transcript, it may explain why PubMed:15256438 could not detect this protein on a Western blot.,PTM:Phosphorylated upon DNA damage, probably by ATM or ATR.,sequence caution:Wrong choice of transcript.,similarity:Belongs to the DNA mismatch repair mutL/hexB family.,

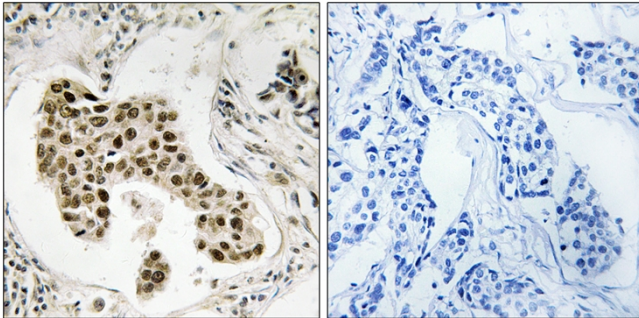
matters needing attention

Avoid repeated freezing and thawing!

Usage suggestions

This product can be used in immunological reaction related experiments. For more information, please consult technical personnel.

Products Images



Immunohistochemistry analysis of paraffin-embedded human breast carcinoma, using PMS2/PMS2CL Antibody. The picture on the right is blocked with the synthesized peptide.