



PIG11 Polyclonal Antibody

Catalog No	BYab-00493
Isotype	IgG
Reactivity	Human;Rat;Mouse;
Applications	WB;IHC;IF;ELISA
Gene Name	TP53I11
Protein Name	Tumor protein p53-inducible protein 11
Immunogen	The antiserum was produced against synthesized peptide derived from human TP53I11. AA range:71-120
Specificity	PIG11 Polyclonal Antibody detects endogenous levels of PIG11 protein.
Formulation	Liquid in PBS containing 50% glycerol, 0.5% BSA and 0.02% sodium azide.
Source	Polyclonal, Rabbit,IgG
Purification	The antibody was affinity-purified from rabbit antiserum by affinity-chromatography using epitope-specific immunogen.
Dilution	Western Blot: 1/500 - 1/2000. Immunohistochemistry: 1/100 - 1/300. Immunofluorescence: 1/200 - 1/1000. ELISA: 1/20000. Not yet tested in other applications.
Concentration	1 mg/ml
Purity	≥90%
Storage Stability	-20°C/1 year
Synonyms	TP53I11; PIG11; Tumor protein p53-inducible protein 11; p53-induced gene 11 protein
Observed Band	18kD
Cell Pathway	Membrane ; Multi-pass membrane protein .
Tissue Specificity	Brain,Testis,Trachea,
Function	
Background	TP53I11 (Tumor Protein P53 Inducible Protein 11) is a Protein Coding gene.
matters needing attention	Avoid repeated freezing and thawing!

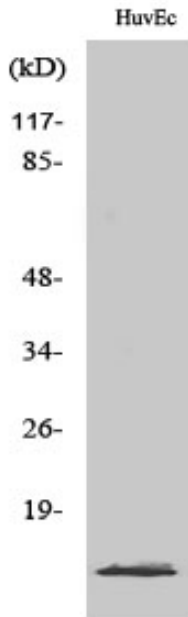
Nanjing BYabscience technology Co.,Ltd



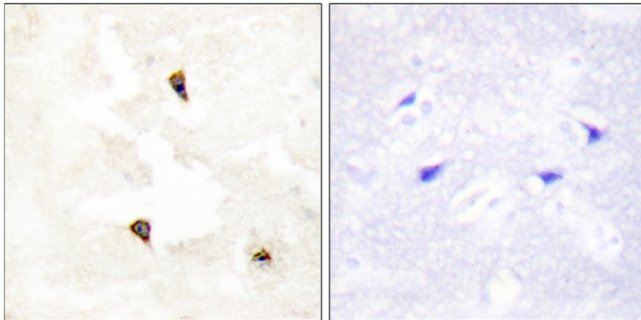
Usage suggestions

This product can be used in immunological reaction related experiments. For more information, please consult technical personnel.

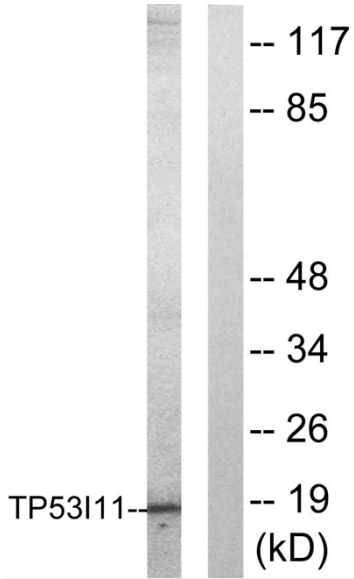
Products Images



Western Blot analysis of various cells using PIG11 Polyclonal Antibody



Immunohistochemistry analysis of paraffin-embedded human breast carcinoma tissue, using TP53I11 Antibody. The picture on the right is blocked with the synthesized peptide.



Western blot analysis of lysates from HUVEC cells, using TP53111 Antibody. The lane on the right is blocked with the synthesized peptide.