



ORAOV1 Polyclonal Antibody

Catalog No	BYab-00469
Isotype	IgG
Reactivity	Human;Rat;Mouse;
Applications	WB;IHC;IF;ELISA
Gene Name	ORAOV1
Protein Name	Oral cancer-overexpressed protein 1
Immunogen	The antiserum was produced against synthesized peptide derived from human ORAV1. AA range:81-130
Specificity	ORAOV1 Polyclonal Antibody detects endogenous levels of ORAOV1 protein.
Formulation	Liquid in PBS containing 50% glycerol, 0.5% BSA and 0.02% sodium azide.
Source	Polyclonal, Rabbit,IgG
Purification	The antibody was affinity-purified from rabbit antiserum by affinity-chromatography using epitope-specific immunogen.
Dilution	Western Blot: 1/500 - 1/2000. Immunohistochemistry: 1/100 - 1/300. Immunofluorescence: 1/200 - 1/1000. ELISA: 1/10000. Not yet tested in other applications.
Concentration	1 mg/ml
Purity	≥90%
Storage Stability	-20°C/1 year
Synonyms	ORAOV1; TAOS1; Oral cancer-overexpressed protein 1; Tumor-amplified and overexpressed sequence 1
Observed Band	15kD
Cell Pathway	Nucleus .
Tissue Specificity	Widely expressed. Highly expressed in placenta, kidney and skeletal muscle.
Function	miscellaneous:Amplified and overexpressed in oral cancer cells.,similarity:Belongs to the ORAOV1 family.,tissue specificity:Widely expressed. Highly expressed in placenta, kidney and skeletal muscle.,
Background	miscellaneous:Amplified and overexpressed in oral cancer cells.,similarity:Belongs to the ORAOV1 family.,tissue specificity:Widely expressed. Highly expressed in placenta, kidney and skeletal muscle.,

Nanjing BYabscience technology Co.,Ltd



matters needing attention

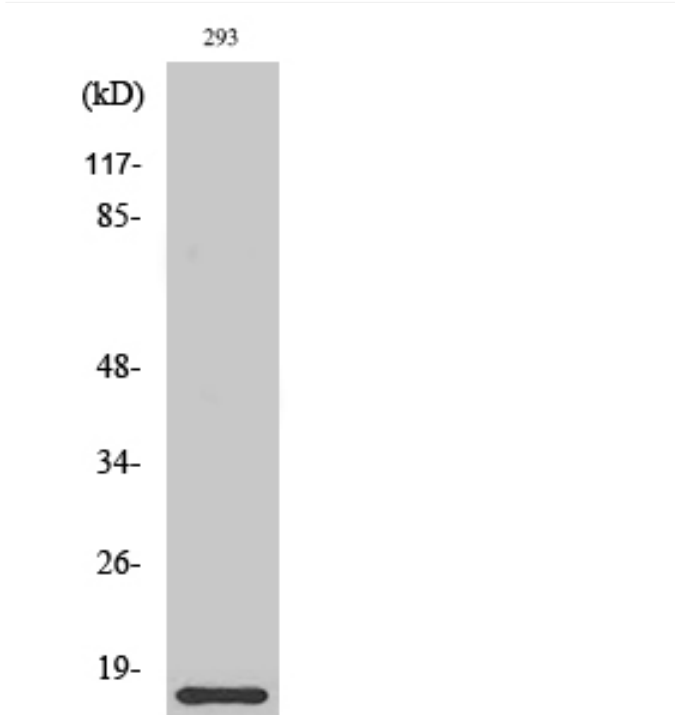
Avoid repeated freezing and thawing!

Usage suggestions

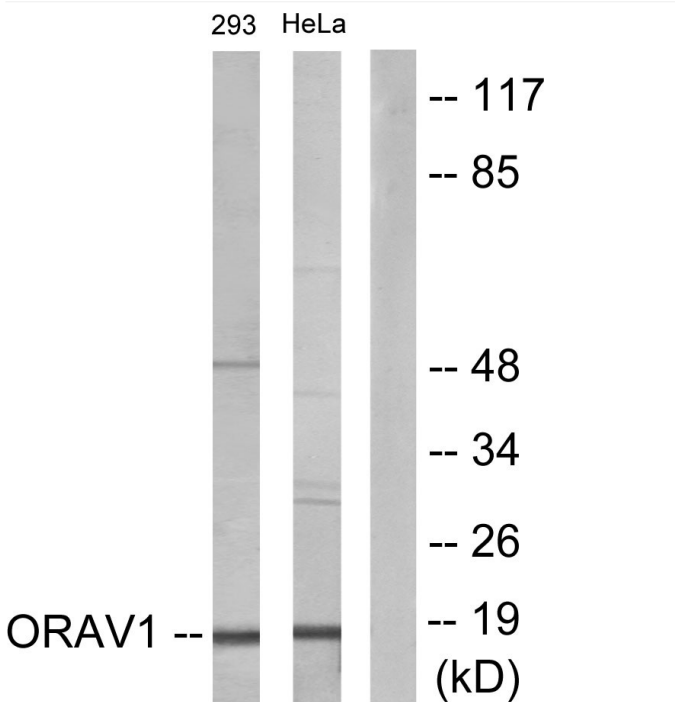
This product can be used in immunological reaction related experiments. For more information, please consult technical personnel.



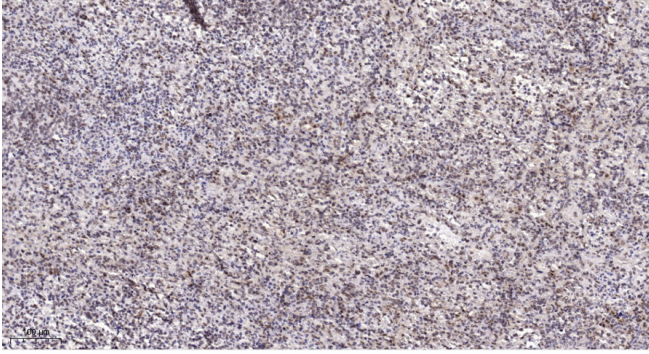
Products Images



Western Blot analysis of various cells using ORAV1 Polyclonal Antibody diluted at 1:2000



Western blot analysis of lysates from 293 and HeLa cells, using ORAV1 Antibody. The lane on the right is blocked with the synthesized peptide.



Immunohistochemical analysis of paraffin-embedded human spleen. 1, Antibody was diluted at 1:200(4° overnight). 2, Tris-EDTA,pH9.0 was used for antigen retrieval. 3,Secondary antibody was diluted at 1:200(room temperature, 45min).