



# NY-CO-8 Polyclonal Antibody

<b>Catalog No</b>	BYab-00467
<b>Isotype</b>	IgG
<b>Reactivity</b>	Human;Mouse
<b>Applications</b>	IHC;IF;ELISA
<b>Gene Name</b>	SDCCAG8
<b>Protein Name</b>	Serologically defined colon cancer antigen 8
<b>Immunogen</b>	Synthesized peptide derived from NY-CO-8 . at AA range: 520-600
<b>Specificity</b>	NY-CO-8 Polyclonal Antibody detects endogenous levels of NY-CO-8 protein.
<b>Formulation</b>	Liquid in PBS containing 50% glycerol, 0.5% BSA and 0.02% sodium azide.
<b>Source</b>	Polyclonal, Rabbit,IgG
<b>Purification</b>	The antibody was affinity-purified from rabbit antiserum by affinity-chromatography using epitope-specific immunogen.
<b>Dilution</b>	IHC: 1/100 - 1/300. ELISA: 1/20000.. IF 1:50-200
<b>Concentration</b>	1 mg/ml
<b>Purity</b>	≥90%
<b>Storage Stability</b>	-20°C/1 year
<b>Synonyms</b>	SDCCAG8; CCCAP; NPHP10; HSPC085; Serologically defined colon cancer antigen 8; Antigen NY-CO-8; Centrosomal colon cancer autoantigen protein; hCCCAP
<b>Observed Band</b>	
<b>Cell Pathway</b>	Cytoplasm, cytoskeleton, microtubule organizing center, centrosome, centriole. Cytoplasm, cytoskeleton, microtubule organizing center, centrosome . Cytoplasm, cytoskeleton, cilium basal body . Cell junction. Located at the distal ends of both centrioles and colocalizes to centrosomes throughout the cell cycle.; [Isoform 2]: Cytoplasm.
<b>Tissue Specificity</b>	Expressed in thymus, prostate, testis, ovary, small intestine, colon, mucosa, colon and renal cancer tumors.
<b>Function</b>	subunit:Homodimer.,tissue specificity:Expressed in thymus, prostate, testis, ovary, small intestine, colon, mucosa, colon and renal cancer tumors.,
<b>Background</b>	This gene encodes a centrosome associated protein. This protein may be involved in organizing the centrosome during interphase and mitosis. Mutations in this gene are associated with retinal-renal ciliopathy. [provided by RefSeq, Oct

Nanjing BYabscience technology Co.,Ltd



2010],

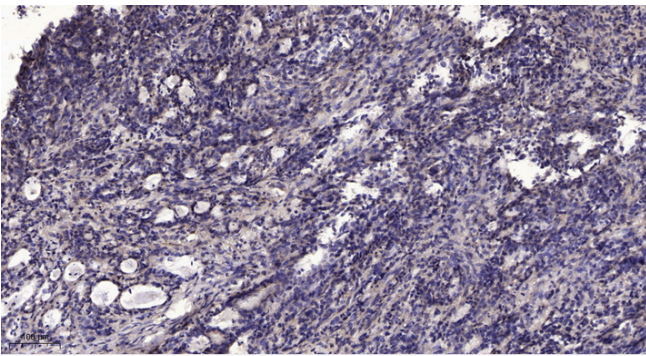
**matters needing attention**

Avoid repeated freezing and thawing!

**Usage suggestions**

This product can be used in immunological reaction related experiments. For more information, please consult technical personnel.

## Products Images



Immunohistochemical analysis of paraffin-embedded human Gastric adenocarcinoma. 1, Antibody was diluted at 1:200(4° overnight). 2, Tris-EDTA,pH9.0 was used for antigen retrieval. 3,Secondary antibody was diluted at 1:200(room temperature, 45min).