



Myp Polyclonal Antibody

| | |
|---------------------------|--|
| Catalog No | BYab-00457 |
| Isotype | IgG |
| Reactivity | Human;Rat;Mouse; |
| Applications | WB;IHC;IF;ELISA |
| Gene Name | NOL3 |
| Protein Name | Nucleolar protein 3 |
| Immunogen | The antiserum was produced against synthesized peptide derived from human ARC. AA range:159-208 |
| Specificity | Myp Polyclonal Antibody detects endogenous levels of Myp protein. |
| Formulation | Liquid in PBS containing 50% glycerol, 0.5% BSA and 0.02% sodium azide. |
| Source | Polyclonal, Rabbit,IgG |
| Purification | The antibody was affinity-purified from rabbit antiserum by affinity-chromatography using epitope-specific immunogen. |
| Dilution | Western Blot: 1/500 - 1/2000. Immunohistochemistry: 1/100 - 1/300. Immunofluorescence: 1/200 - 1/1000. ELISA: 1/20000. Not yet tested in other applications. |
| Concentration | 1 mg/ml |
| Purity | ≥90% |
| Storage Stability | -20°C/1 year |
| Synonyms | Myp; NOL3; Nop30; Nucleolar protein 3; apoptosis repressor ARC; apoptosis repressor with CARD; apoptosis repressor with caspase recruitment domain (CARD); muscle-enriched cytoplasmic protein; nucleolar protein of 30 kDa |
| Observed Band | 28kD |
| Cell Pathway | [Isoform 1]: Nucleus, nucleolus . The SR-rich C-terminus mediates nuclear localization. . ; [Isoform 3]: Cytoplasm . ; [Isoform 2]: Cytoplasm . Mitochondrion . Sarcoplasmic reticulum . Membrane ; Lipid-anchor . Phosphorylation at Thr-149 results in translocation to mitochondria. Colocalized with mitochondria in response to oxidative stress. . |
| Tissue Specificity | Highly expressed in heart and skeletal muscle. Detected at low levels in placenta, liver, kidney and pancreas. |
| Function | |
| Background | NOL3 encodes an anti-apoptotic protein nucleolar protein 3 that has been shown to down-regulate the enzyme activities of caspase 2, caspase 8 and tumor protein |

Nanjing BYabscience technology Co.,Ltd



p53. Multiple transcript variants encoding different isoforms have been found for NOL3.

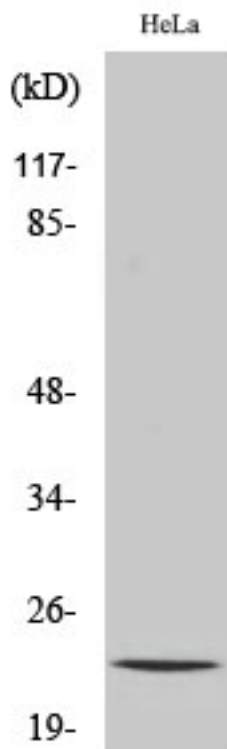
matters needing attention

Avoid repeated freezing and thawing!

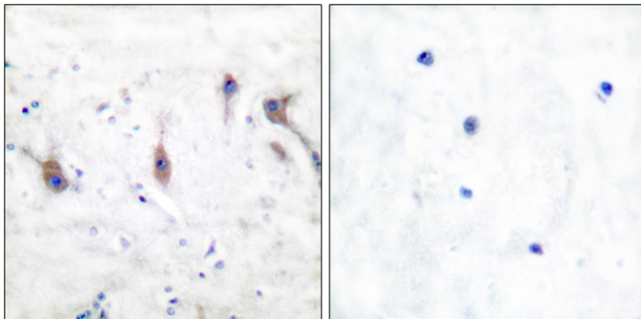
Usage suggestions

This product can be used in immunological reaction related experiments. For more information, please consult technical personnel.

Products Images

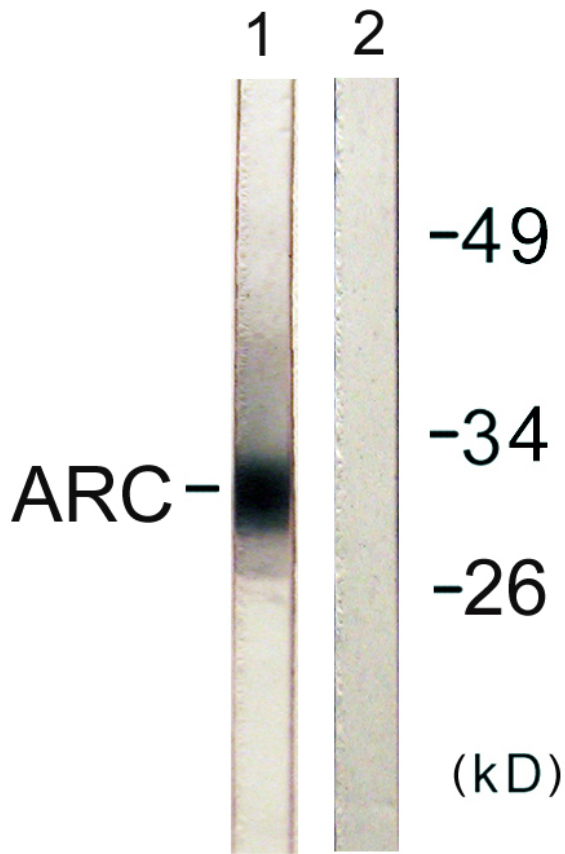


Western Blot analysis of various cells using Myp Polyclonal Antibody

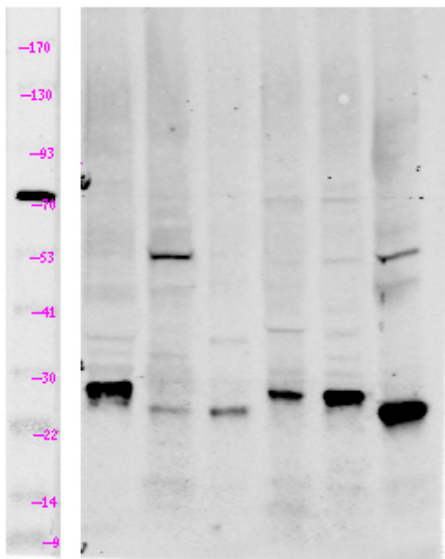


Immunohistochemistry analysis of paraffin-embedded human brain tissue, using ARC Antibody. The picture on the right is blocked with the synthesized peptide.

Nanjing BYabscience technology Co.,Ltd



Western blot analysis of lysates from HeLa cells, using ARC Antibody. The lane on the right is blocked with the synthesized peptide.



Western Blot analysis of lane1 mouse-brain, lane2 mouse-kidney, lane3 HeLa, lane4 MCF7, lane5 293T, lane6 mouse-muscle using primary antibody at 1:1000 dilution 4°C, overnight. Secondary antibody(catalog#:RS23920) was diluted at 1:10000 25°C, 1.5hours