



# MGMT Polyclonal Antibody

<b>Catalog No</b>	BYab-00449
<b>Isotype</b>	IgG
<b>Reactivity</b>	Human;Rat
<b>Applications</b>	WB;IHC;IF;ELISA
<b>Gene Name</b>	MGMT
<b>Protein Name</b>	Methylated-DNA--protein-cysteine methyltransferase
<b>Immunogen</b>	The antiserum was produced against synthesized peptide derived from human MGMT. AA range:1-50
<b>Specificity</b>	MGMT Polyclonal Antibody detects endogenous levels of MGMT protein.
<b>Formulation</b>	Liquid in PBS containing 50% glycerol, 0.5% BSA and 0.02% sodium azide.
<b>Source</b>	Polyclonal, Rabbit,IgG
<b>Purification</b>	The antibody was affinity-purified from rabbit antiserum by affinity-chromatography using epitope-specific immunogen.
<b>Dilution</b>	WB: 1/500 - 1/2000. IHC: 1/100 - 1/300. ELISA: 1/5000.. IF 1:50-200
<b>Concentration</b>	1 mg/ml
<b>Purity</b>	≥90%
<b>Storage Stability</b>	-20°C/1 year
<b>Synonyms</b>	MGMT; Methylated-DNA--protein-cysteine methyltransferase; 6-O-methylguanine-DNA methyltransferase; MGMT; O-6-methylguanine-DNA-alkyltransferase
<b>Observed Band</b>	22kD
<b>Cell Pathway</b>	Nucleus.
<b>Tissue Specificity</b>	Cerebellum,Epithelium,Placenta,
<b>Function</b>	catalytic activity:DNA (containing 6-O-methylguanine) + protein L-cysteine = DNA (without 6-O-methylguanine) + protein S-methyl-L-cysteine.,cofactor:Binds 1 zinc ion.,function:Involved in the cellular defense against the biological effects of O6-methylguanine (O6-MeG) in DNA. Repairs alkylated guanine in DNA by stoichiometrically transferring the alkyl group at the O-6 position to a cysteine residue in the enzyme. This is a suicide reaction: the enzyme is irreversibly inactivated.,similarity:Belongs to the MGMT family.,

Nanjing BYabscience technology Co.,Ltd



---

**Background**

Alkylating agents are potent carcinogens that can result in cell death, mutation and cancer. The protein encoded by this gene is a DNA repair protein that is involved in cellular defense against mutagenesis and toxicity from alkylating agents. The protein catalyzes transfer of methyl groups from O(6)-alkylguanine and other methylated moieties of the DNA to its own molecule, which repairs the toxic lesions. Methylation of the genes promoter has been associated with several cancer types, including colorectal cancer, lung cancer, lymphoma and glioblastoma. [provided by RefSeq, Sep 2015],

---

**matters needing attention**

Avoid repeated freezing and thawing!

---

**Usage suggestions**

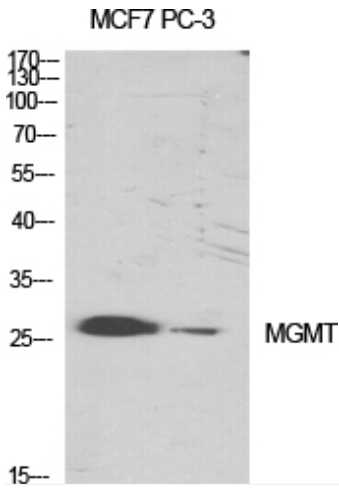
This product can be used in immunological reaction related experiments. For more information, please consult technical personnel.

---

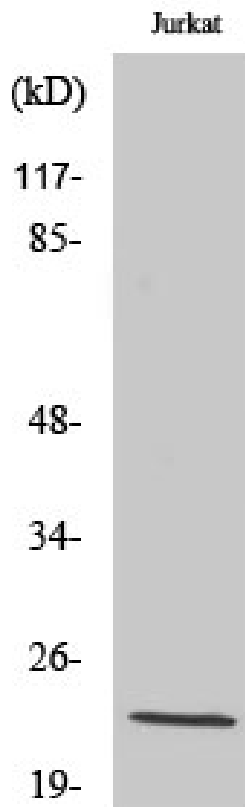
---



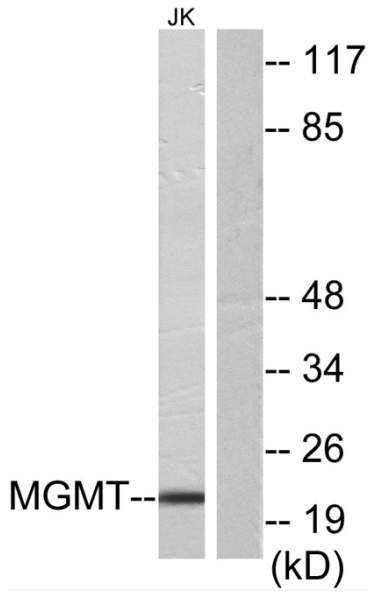
## Products Images



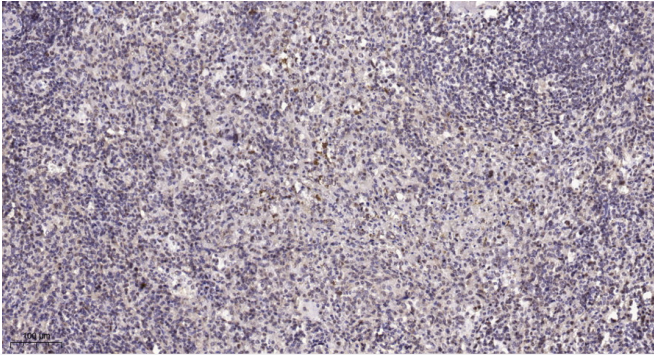
Western Blot analysis of various cells using MGMT Polyclonal Antibody diluted at 1:1000 cells nucleus extracted by Minute TM Cytoplasmic and Nuclear Fractionation kit (SC-003, Inventbiotech, MN, USA).



Western Blot analysis of Jurkat cells using MGMT Polyclonal Antibody diluted at 1:1000 cells nucleus extracted by Minute TM Cytoplasmic and Nuclear Fractionation kit (SC-003, Inventbiotech, MN, USA).



Western blot analysis of lysates from Jurkat cells, using MGMT Antibody. The lane on the right is blocked with the synthesized peptide.



Immunohistochemical analysis of paraffin-embedded human spleen. 1, Tris-EDTA, pH9.0 was used for antigen retrieval. 2 Antibody was diluted at 1:200(4° overnight). 3, Secondary antibody was diluted at 1:200(room temperature, 45min).