



# MDM1 Polyclonal Antibody

<b>Catalog No</b>	BYab-00443
<b>Isotype</b>	IgG
<b>Reactivity</b>	Human;Mouse;Rat
<b>Applications</b>	WB;ELISA
<b>Gene Name</b>	MDM1
<b>Protein Name</b>	Nuclear protein MDM1
<b>Immunogen</b>	The antiserum was produced against synthesized peptide derived from human MDM1. AA range:665-714
<b>Specificity</b>	MDM1 Polyclonal Antibody detects endogenous levels of MDM1 protein.
<b>Formulation</b>	Liquid in PBS containing 50% glycerol, 0.5% BSA and 0.02% sodium azide.
<b>Source</b>	Polyclonal, Rabbit,IgG
<b>Purification</b>	The antibody was affinity-purified from rabbit antiserum by affinity-chromatography using epitope-specific immunogen.
<b>Dilution</b>	Western Blot: 1/500 - 1/2000. ELISA: 1/5000. Not yet tested in other applications.
<b>Concentration</b>	1 mg/ml
<b>Purity</b>	≥90%
<b>Storage Stability</b>	-20°C/1 year
<b>Synonyms</b>	MDM1; Nuclear protein MDM1
<b>Observed Band</b>	80kD
<b>Cell Pathway</b>	Nucleus . Cytoplasm, cytoskeleton, microtubule organizing center, centrosome . Cytoplasm, cytoskeleton, microtubule organizing center, centrosome, centriole . Localizes to the centriole lumen. .
<b>Tissue Specificity</b>	Brain,Epithelium,Prostate,Testis,Trachea,
<b>Function</b>	similarity:Belongs to the MDM1 family.,
<b>Background</b>	This gene encodes a nuclear protein similar to the mouse double minute 1 protein. The mouse gene is located in double minute (DM) chromatin particles, is amplified in the mouse transformed 3T3 cell line, and the encoded protein is able to bind to p53. Alternatively spliced transcript variants encoding different isoforms have been found for this gene. [provided by RefSeq, Mar 2011],

Nanjing BYabscience technology Co.,Ltd



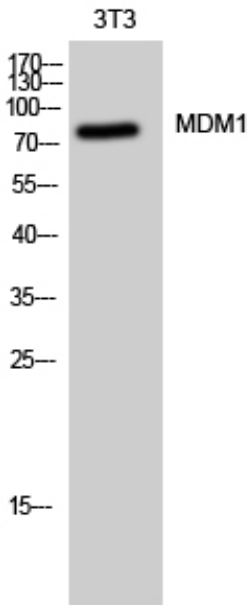
**matters needing attention**

Avoid repeated freezing and thawing!

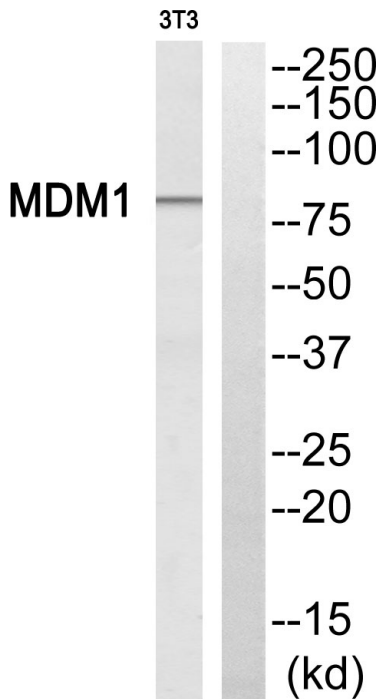
**Usage suggestions**

This product can be used in immunological reaction related experiments. For more information, please consult technical personnel.

## Products Images

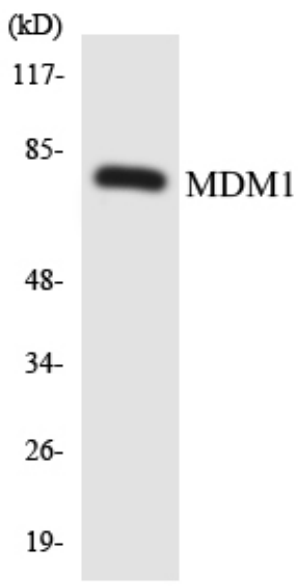


Western Blot analysis of 3T3 cells using MDM1 Polyclonal Antibody cells nucleus extracted by Minute TM Cytoplasmic and Nuclear Fractionation kit (SC-003, Inventibiotech, MN, USA).



Western blot analysis of MDM1 Antibody. The lane on the right is blocked with the MDM1 peptide.

Nanjing BYabscience technology Co.,Ltd



Western blot analysis of the lysates from HepG2 cells using MDM1 antibody.