



Maspin Polyclonal Antibody

Catalog No	BYab-00441
Isotype	IgG
Reactivity	Human;Mouse;Rat
Applications	WB;IHC;IF;ELISA
Gene Name	SERPINB5
Protein Name	Serpin B5
Immunogen	The antiserum was produced against synthesized peptide derived from human Serpin B5. AA range:91-140
Specificity	Maspin Polyclonal Antibody detects endogenous levels of Maspin protein.
Formulation	Liquid in PBS containing 50% glycerol, 0.5% BSA and 0.02% sodium azide.
Source	Polyclonal, Rabbit,IgG
Purification	The antibody was affinity-purified from rabbit antiserum by affinity-chromatography using epitope-specific immunogen.
Dilution	Western Blot: 1/500 - 1/2000. Immunohistochemistry: 1/100 - 1/300. Immunofluorescence: 1/200 - 1/1000. ELISA: 1/20000. Not yet tested in other applications.
Concentration	1 mg/ml
Purity	≥90%
Storage Stability	-20°C/1 year
Synonyms	SERPINB5; PI5; Serpin B5; Maspin; Peptidase inhibitor 5; PI-5
Observed Band	40kD
Cell Pathway	Secreted, extracellular space.
Tissue Specificity	Normal mammary epithelial cells.
Function	function:Tumor suppressor. It blocks the growth, invasion, and metastatic properties of mammary tumors. As it does not undergo the S (stressed) to R (relaxed) conformational transition characteristic of active serpins, it exhibits no serine protease inhibitory activity.,similarity:Belongs to the serpin family. Ov-serpin subfamily.,tissue specificity:Normal mammary epithelial cells.,
Background	function:Tumor suppressor. It blocks the growth, invasion, and metastatic properties of mammary tumors. As it does not undergo the S (stressed) to R (relaxed) conformational transition characteristic of active serpins, it exhibits no serine protease inhibitory activity.,similarity:Belongs to the serpin family.

Nanjing BYabscience technology Co.,Ltd



Ov-serpin subfamily.,tissue specificity:Normal mammary epithelial cells.,

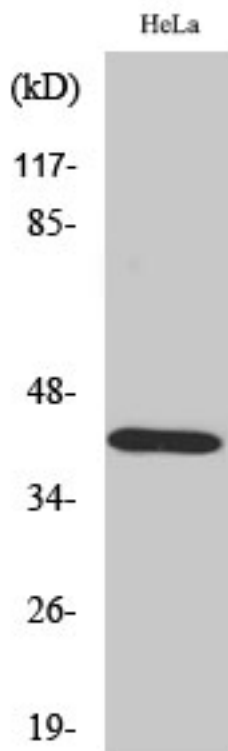
matters needing attention

Avoid repeated freezing and thawing!

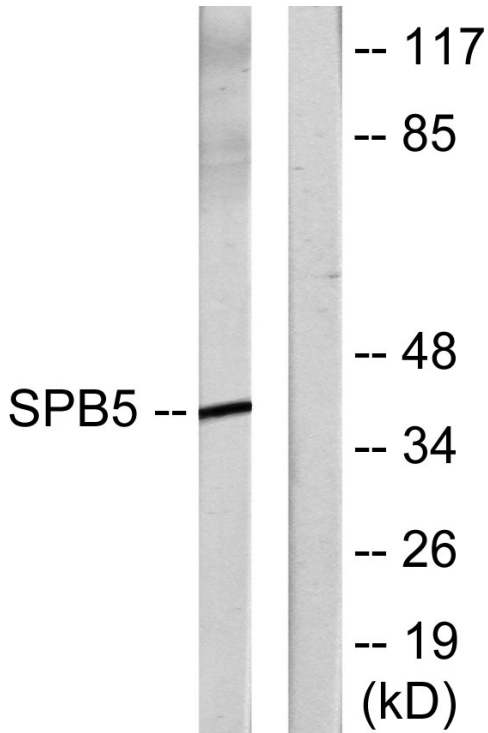
Usage suggestions

This product can be used in immunological reaction related experiments. For more information, please consult technical personnel.

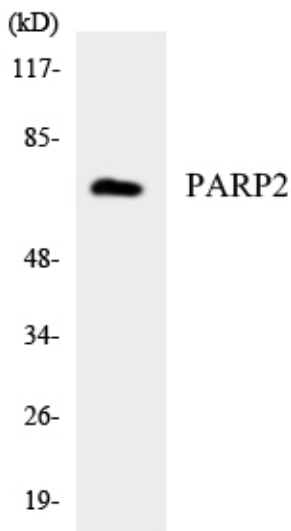
Products Images



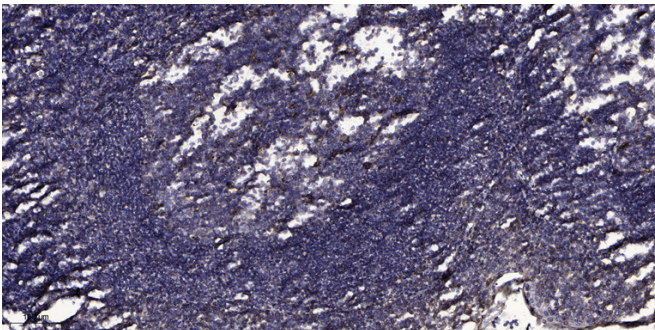
Western Blot analysis of various cells using Maspin Polyclonal Antibody



Western blot analysis of lysates from HeLa cells, using Serpin B5 Antibody. The lane on the right is blocked with the synthesized peptide.



Western blot analysis of the lysates from HeLa cells using PARP2 antibody.



Immunohistochemical analysis of paraffin-embedded human tonsil. 1, Antibody was diluted at 1:200(4° overnight). 2, Tris-EDTA,pH9.0 was used for antigen retrieval. 3,Secondary antibody was diluted at 1:200(room temperature, 30min).