



MAGE-9 Polyclonal Antibody

Catalog No	BYab-00435
Isotype	IgG
Reactivity	Human;Rat;Mouse;
Applications	IHC;IF;ELISA
Gene Name	MAGEA9
Protein Name	Melanoma-associated antigen 9
Immunogen	Synthesized peptide derived from MAGE-9 . at AA range: 1-80
Specificity	MAGE-9 Polyclonal Antibody detects endogenous levels of MAGE-9 protein.
Formulation	Liquid in PBS containing 50% glycerol, 0.5% BSA and 0.02% sodium azide.
Source	Polyclonal, Rabbit,IgG
Purification	The antibody was affinity-purified from rabbit antiserum by affinity-chromatography using epitope-specific immunogen.
Dilution	IHC: 1/100 - 1/300. ELISA: 1/40000.. IF 1:50-200
Concentration	1 mg/ml
Purity	≥90%
Storage Stability	-20°C/1 year
Synonyms	MAGEA9; MAGE9; MAGEA9A; MAGEA9B; Melanoma-associated antigen 9; Cancer/testis antigen 1.9; CT1.9; MAGE-9 antigen
Observed Band	
Cell Pathway	
Tissue Specificity	Expressed in many tumors of several types, such as melanoma, head and neck squamous cell carcinoma, lung carcinoma and breast carcinoma, but not in normal tissues except for testes and placenta.
Function	function:Not known, though may play a role in embryonal development and tumor transformation or aspects of tumor progression.,similarity:Contains 1 MAGE domain.,tissue specificity:Expressed in many tumors of several types, such as melanoma, head and neck squamous cell carcinoma, lung carcinoma and breast carcinoma, but not in normal tissues except for testes and placenta.,
Background	This gene is a member of the MAGEA gene family. The members of this family encode proteins with 50 to 80% sequence identity to each other. The promoters and first exons of the MAGEA genes show considerable variability, suggesting that the existence of this gene family enables the same function to be expressed

Nanjing BYabscience technology Co.,Ltd



under different transcriptional controls. The MAGEA genes are clustered at chromosomal location Xq28. They have been implicated in some hereditary disorders, such as dyskeratosis congenita. [provided by RefSeq, Jul 2008],

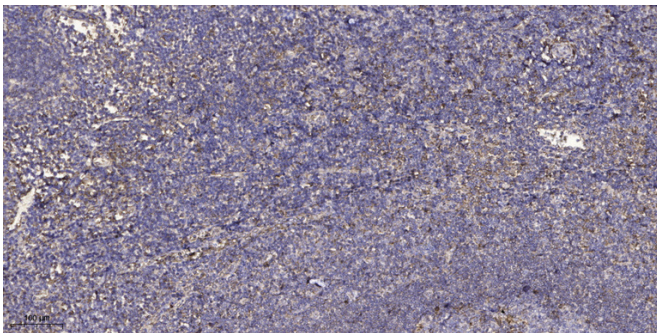
matters needing attention

Avoid repeated freezing and thawing!

Usage suggestions

This product can be used in immunological reaction related experiments. For more information, please consult technical personnel.

Products Images



Immunohistochemical analysis of paraffin-embedded human tonsil. 1, Antibody was diluted at 1:200(4° overnight). 2, Tris-EDTA,pH9.0 was used for antigen retrieval. 3,Secondary antibody was diluted at 1:200(room temperature, 30min).