



LDOC1 Polyclonal Antibody

Catalog No	BYab-00431
Isotype	IgG
Reactivity	Human;Mouse
Applications	IHC;IF;ELISA
Gene Name	LDOC1
Protein Name	Protein LDOC1
Immunogen	The antiserum was produced against synthesized peptide derived from human LDOC1. AA range:21-70
Specificity	LDOC1 Polyclonal Antibody detects endogenous levels of LDOC1 protein.
Formulation	Liquid in PBS containing 50% glycerol, 0.5% BSA and 0.02% sodium azide.
Source	Polyclonal, Rabbit,IgG
Purification	The antibody was affinity-purified from rabbit antiserum by affinity-chromatography using epitope-specific immunogen.
Dilution	IHC: 1/100 - 1/300. ELISA: 1/5000.. IF 1:50-200
Concentration	1 mg/ml
Purity	≥90%
Storage Stability	-20°C/1 year
Synonyms	LDOC1; BCUR1; Protein LDOC1; Leucine zipper protein down-regulated in cancer cells
Observed Band	
Cell Pathway	Nucleus .
Tissue Specificity	Ubiquitously expressed with high levels in brain ant thyroid and low expression in placenta, liver and leukocytes. Expressed as well in six of the seven human breast cancer cell lines examined.
Function	function:May have an important role in the development and/or progression of some cancers.,similarity:Belongs to the LDOC1 family.,tissue specificity:Ubiquitously expressed with high levels in brain ant thyroid and low expression in placenta, liver and leukocytes. Expressed as well in six of the seven human breast cancer cell lines examined.,
Background	The protein encoded by this gene contains a leucine zipper-like motif and a proline-rich region that shares marked similarity with an SH3-binding domain. The protein localizes to the nucleus and is down-regulated in some cancer cell lines. It

Nanjing BYabscience technology Co.,Ltd



is thought to regulate the transcriptional response mediated by the nuclear factor kappa B (NF-kappaB). The gene has been proposed as a tumor suppressor gene whose protein product may have an important role in the development and/or progression of some cancers. [provided by RefSeq, Jul 2008],

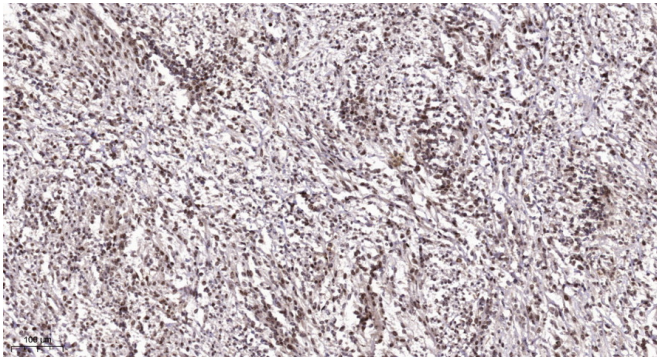
matters needing attention

Avoid repeated freezing and thawing!

Usage suggestions

This product can be used in immunological reaction related experiments. For more information, please consult technical personnel.

Products Images



Immunohistochemical analysis of paraffin-embedded human Colon cancer. 1, Antibody was diluted at 1:200(4° overnight). 2, Tris-EDTA,pH9.0 was used for antigen retrieval. 3,Secondary antibody was diluted at 1:200(room temperature, 45min).