



Granzyme A Polyclonal Antibody

Catalog No	BYab-00415
Isotype	IgG
Reactivity	Human;Rat;Mouse;
Applications	IHC;IF;ELISA
Gene Name	GZMA
Protein Name	Granzyme A
Immunogen	The antiserum was produced against synthesized peptide derived from human GRAA. AA range:61-110
Specificity	Granzyme A Polyclonal Antibody detects endogenous levels of Granzyme A protein.
Formulation	Liquid in PBS containing 50% glycerol, 0.5% BSA and 0.02% sodium azide.
Source	Polyclonal, Rabbit,IgG
Purification	The antibody was affinity-purified from rabbit antiserum by affinity-chromatography using epitope-specific immunogen.
Dilution	Immunohistochemistry: 1/100 - 1/300. Immunofluorescence: 1/200 - 1/1000. ELISA: 1/5000. Not yet tested in other applications.
Concentration	1 mg/ml
Purity	≥90%
Storage Stability	-20°C/1 year
Synonyms	GZMA; CTLA3; HFSP; Granzyme A; CTL tryptase; Cytotoxic T-lymphocyte proteinase 1; Fragmentin-1; Granzyme-1; Hanukkah factor; H factor; HF
Observed Band	
Cell Pathway	[Isoform alpha]: Secreted . Cytoplasmic granule . Delivered into the target cell by perforin. .
Tissue Specificity	Blood,Liver,T-cell,
Function	catalytic activity:Hydrolysis of proteins, including fibronectin, type IV collagen and nucleolin. Preferential cleavage: -Arg- -Xaa-, -Lys- -Xaa- >> -Phe- -Xaa- in small molecule substrates.,function:This enzyme is necessary for target cell lysis in cell-mediated immune responses. It cleaves after Lys or Arg. May be involved in apoptosis.,similarity:Belongs to the peptidase S1 family. Granzyme subfamily.,similarity:Contains 1 peptidase S1 domain.,subunit:Homodimer; disulfide-linked.,
Background	Cytolytic T lymphocytes (CTL) and natural killer (NK) cells share the remarkable ability to recognize, bind, and lyse specific target cells. They are thought to protect

Nanjing BYabscience technology Co.,Ltd



their host by lysing cells bearing on their surface 'nonself' antigens, usually peptides or proteins resulting from infection by intracellular pathogens. The protein described here is a T cell- and natural killer cell-specific serine protease that may function as a common component necessary for lysis of target cells by cytotoxic T lymphocytes and natural killer cells. [provided by RefSeq, Jul 2008],

matters needing attention

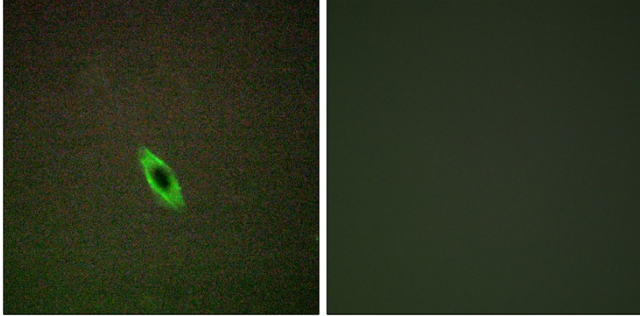
Avoid repeated freezing and thawing!

Usage suggestions

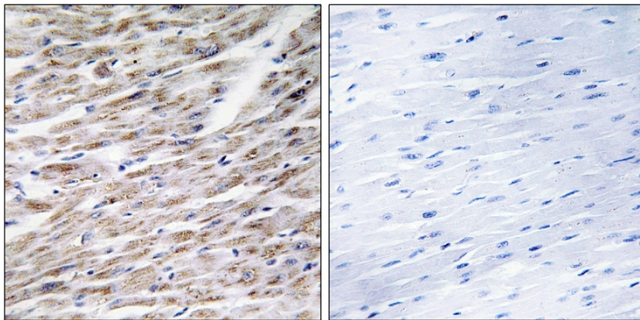
This product can be used in immunological reaction related experiments. For more information, please consult technical personnel.



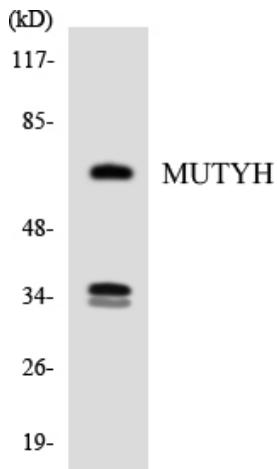
Products Images



Immunofluorescence analysis of HepG2 cells, using GRAA Antibody. The picture on the right is blocked with the synthesized peptide.



Immunohistochemistry analysis of paraffin-embedded human heart tissue, using GRAA Antibody. The picture on the right is blocked with the synthesized peptide.



Western blot analysis of the lysates from HUVEC cells using MUTYH antibody.