



# Gas6 Polyclonal Antibody

<b>Catalog No</b>	BYab-00410
<b>Isotype</b>	IgG
<b>Reactivity</b>	Human;Rat;Mouse;
<b>Applications</b>	WB;IHC;IF;ELISA
<b>Gene Name</b>	GAS6
<b>Protein Name</b>	Growth arrest-specific protein 6
<b>Immunogen</b>	The antiserum was produced against synthesized peptide derived from human GAS6. AA range:291-340
<b>Specificity</b>	Gas6 Polyclonal Antibody detects endogenous levels of Gas6 protein.
<b>Formulation</b>	Liquid in PBS containing 50% glycerol, 0.5% BSA and 0.02% sodium azide.
<b>Source</b>	Polyclonal, Rabbit,IgG
<b>Purification</b>	The antibody was affinity-purified from rabbit antiserum by affinity-chromatography using epitope-specific immunogen.
<b>Dilution</b>	WB: 1/500 - 1/2000. IHC: 1/100 - 1/300. ELISA: 1/40000.. IF 1:50-200
<b>Concentration</b>	1 mg/ml
<b>Purity</b>	≥90%
<b>Storage Stability</b>	-20°C/1 year
<b>Synonyms</b>	GAS6; AXLLG; Growth arrest-specific protein 6; GAS-6; AXL receptor tyrosine kinase ligand
<b>Observed Band</b>	75kD
<b>Cell Pathway</b>	Secreted .
<b>Tissue Specificity</b>	Plasma. Isoform 1 and isoform 2 are widely expressed, isoform 1 being expressed at higher levels than isoform 2 in most tissues. Isoform 2 is the predominant form in spleen.
<b>Function</b>	function:Ligand for tyrosine-protein kinase receptors AXL, TYRO3 and MER whose signaling is implicated in cell growth and survival, cell adhesion and cell migration. Plays a role in thrombosis by amplifying platelet aggregation and secretion in response to known agonists.,PTM:Gamma-carboxyglutamate residues are formed by vitamin K dependent carboxylation. These residues are essential for the binding of calcium.,PTM:Isoform 1 is proteolytically processed after secretion to yield a N-terminal 36 kDa protein and a C-terminal 50 kDa protein including the laminin G-like domains which activates AXL.,similarity:Contains 1 Gla (gamma-carboxy-glutamate)

Nanjing BYabscience technology Co.,Ltd



domain.,similarity:Contains 2 laminin G-like domains.,similarity:Contains 4 EGF-like domains.,subunit:Heterodimer and heterotetramer with AXL.,tissue specificity:Plasma. Isoform 1 and isoform 2 are widely expressed. Isoform 1 is the predominant fo

**Background**

This gene encodes a gamma-carboxyglutamic acid (Gla)-containing protein thought to be involved in the stimulation of cell proliferation. This gene is frequently overexpressed in many cancers and has been implicated as an adverse prognostic marker. Elevated protein levels are additionally associated with a variety of disease states, including venous thromboembolic disease, systemic lupus erythematosus, chronic renal failure, and preeclampsia. [provided by RefSeq, Aug 2014],

**matters needing attention**

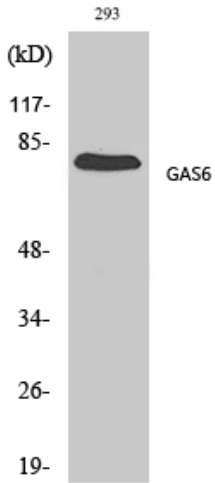
Avoid repeated freezing and thawing!

**Usage suggestions**

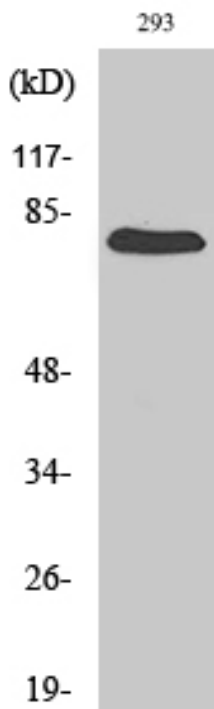
This product can be used in immunological reaction related experiments. For more information, please consult technical personnel.



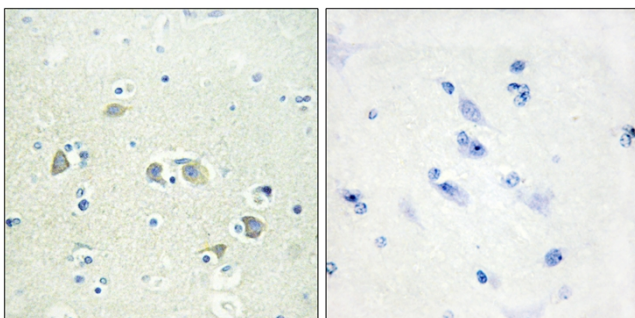
## Products Images



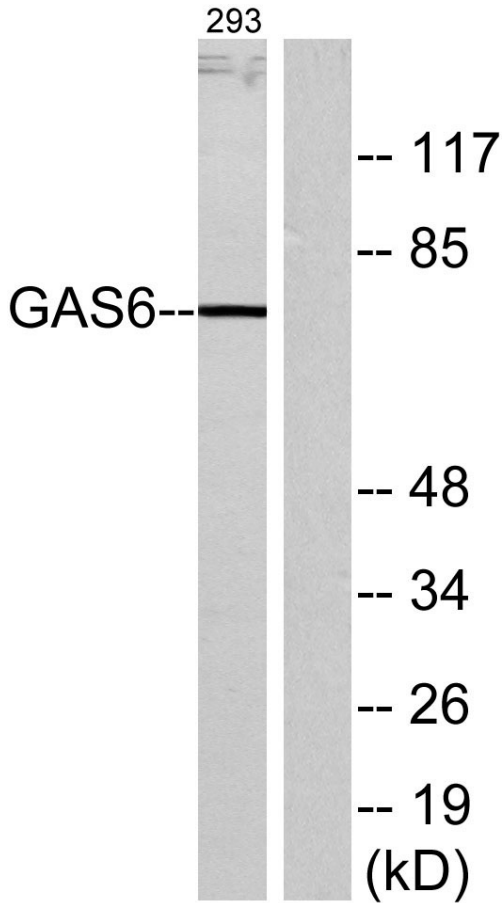
Western Blot analysis of various cells using Gas6 Polyclonal Antibody diluted at 1:500



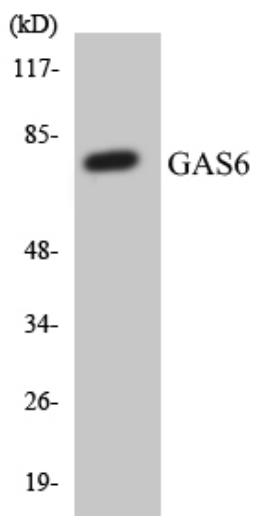
Western Blot analysis of 293 cells using Gas6 Polyclonal Antibody diluted at 1:500



Immunohistochemistry analysis of paraffin-embedded human brain tissue, using GAS6 Antibody. The picture on the right is blocked with the synthesized peptide.



Western blot analysis of lysates from 293 cells, using GAS6 Antibody. The lane on the right is blocked with the synthesized peptide.



Western blot analysis of the lysates from HT-29 cells using GAS6 antibody.