



Gas1 Polyclonal Antibody

Catalog No	BYab-00409
Isotype	IgG
Reactivity	Human;Mouse
Applications	WB;ELISA
Gene Name	GAS1
Protein Name	Growth arrest-specific protein 1
Immunogen	The antiserum was produced against synthesized peptide derived from human GAS1. AA range:241-290
Specificity	Gas1 Polyclonal Antibody detects endogenous levels of Gas1 protein.
Formulation	Liquid in PBS containing 50% glycerol, 0.5% BSA and 0.02% sodium azide.
Source	Polyclonal, Rabbit,IgG
Purification	The antibody was affinity-purified from rabbit antiserum by affinity-chromatography using epitope-specific immunogen.
Dilution	Western Blot: 1/500 - 1/2000. ELISA: 1/40000. Not yet tested in other applications.
Concentration	1 mg/ml
Purity	≥90%
Storage Stability	-20°C/1 year
Synonyms	GAS1; Growth arrest-specific protein 1; GAS-1
Observed Band	36kD
Cell Pathway	Cell membrane ; Lipid-anchor, GPI-anchor .
Tissue Specificity	Liver,
Function	function:Specific growth arrest protein involved in growth suppression. Blocks entry to S phase. Prevents cycling of normal and transformed cells.,
Background	Growth arrest-specific 1 plays a role in growth suppression. GAS1 blocks entry to S phase and prevents cycling of normal and transformed cells. Gas1 is a putative tumor suppressor gene. [provided by RefSeq, Jul 2008],
matters needing attention	Avoid repeated freezing and thawing!

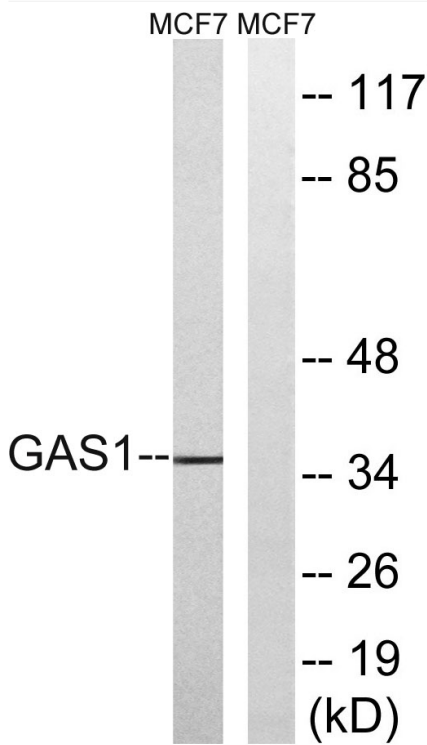
Nanjing BYabscience technology Co.,Ltd



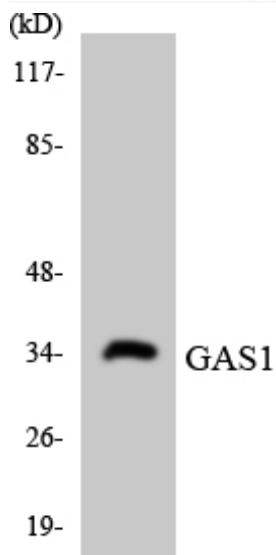
Usage suggestions

This product can be used in immunological reaction related experiments. For more information, please consult technical personnel.

Products Images



Western blot analysis of lysates from MCF-7 cells, using GAS1 Antibody. The lane on the right is blocked with the synthesized peptide.



Western blot analysis of the lysates from HeLa cells using GAS1 antibody.

Nanjing BYabscience technology Co.,Ltd