



FASTKD2 Polyclonal Antibody

Catalog No	BYab-00397
Isotype	IgG
Reactivity	Human;Rat;Mouse;
Applications	WB;IHC;IF;ELISA
Gene Name	FASTKD2
Protein Name	FAST kinase domain-containing protein 2
Immunogen	The antiserum was produced against synthesized peptide derived from human FASTKD2. AA range:171-220
Specificity	FASTKD2 Polyclonal Antibody detects endogenous levels of FASTKD2 protein.
Formulation	Liquid in PBS containing 50% glycerol, 0.5% BSA and 0.02% sodium azide.
Source	Polyclonal, Rabbit,IgG
Purification	The antibody was affinity-purified from rabbit antiserum by affinity-chromatography using epitope-specific immunogen.
Dilution	WB: 1/500 - 1/2000. ELISA: 1/5000.. IF 1:50-200
Concentration	1 mg/ml
Purity	≥90%
Storage Stability	-20°C/1 year
Synonyms	FASTKD2; KIAA0971; FAST kinase domain-containing protein 2
Observed Band	81kD
Cell Pathway	Mitochondrion matrix, mitochondrion nucleoid . Mitochondrion matrix . Localizes to mitochondrial RNA granules found in close proximity to the mitochondrial nucleoids. .
Tissue Specificity	Expression detected in spleen, thymus, testis, ovary, colon, heart, smooth muscle, kidney, brain, lung, liver and white adipose tissue with highest expression in heart, smooth muscle and thyroid.
Function	caution:It is uncertain whether Met-1 or Met-17 is the initiator.,similarity:Belongs to the FAST kinase family.,similarity:Contains 1 RAP domain.,
Background	This gene encodes a protein that is localized in the mitochondrial inner compartment and that may play a role in mitochondrial apoptosis. Nonsense mutations have been reported to result in cytochrome c oxidase deficiency. [provided by RefSeq, Oct 2008],

Nanjing BYabscience technology Co.,Ltd



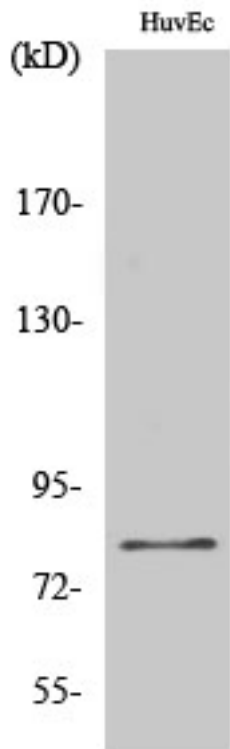
matters needing attention

Avoid repeated freezing and thawing!

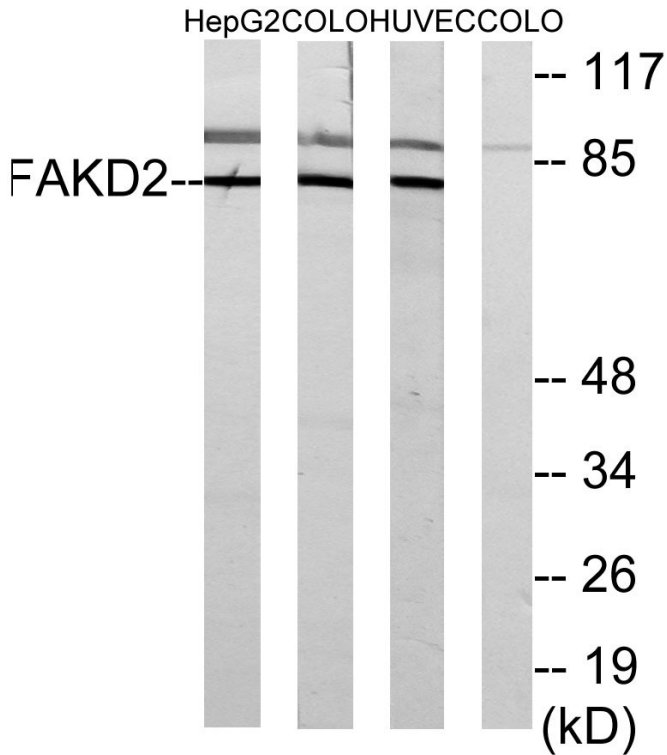
Usage suggestions

This product can be used in immunological reaction related experiments. For more information, please consult technical personnel.

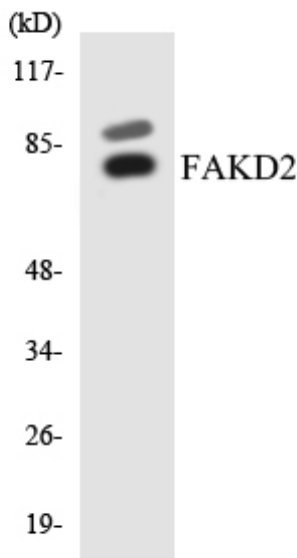
Products Images



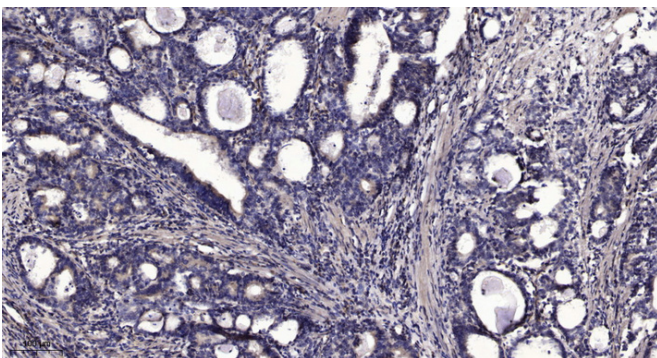
Western Blot analysis of various cells using FASTKD2 Polyclonal Antibody



Western blot analysis of lysates from HUVEC, HepG2, and COLO cells, using FAKD2 Antibody. The lane on the right is blocked with the synthesized peptide.



Western blot analysis of the lysates from COLO205 cells using FAKD2 antibody.



Immunohistochemical analysis of paraffin-embedded human Gastric adenocarcinoma. 1, Antibody was diluted at 1:200(4° overnight). 2, Tris-EDTA, pH9.0 was used for antigen retrieval. 3, Secondary antibody was diluted at 1:200(room temperature, 45min).