



# FASTKD1 Polyclonal Antibody

<b>Catalog No</b>	BYab-00396
<b>Isotype</b>	IgG
<b>Reactivity</b>	Human;Mouse;Monkey
<b>Applications</b>	WB;ELISA
<b>Gene Name</b>	FASTKD1
<b>Protein Name</b>	FAST kinase domain-containing protein 1
<b>Immunogen</b>	The antiserum was produced against synthesized peptide derived from human FAKD1. AA range:561-610
<b>Specificity</b>	FASTKD1 Polyclonal Antibody detects endogenous levels of FASTKD1 protein.
<b>Formulation</b>	Liquid in PBS containing 50% glycerol, 0.5% BSA and 0.02% sodium azide.
<b>Source</b>	Polyclonal, Rabbit,IgG
<b>Purification</b>	The antibody was affinity-purified from rabbit antiserum by affinity-chromatography using epitope-specific immunogen.
<b>Dilution</b>	Western Blot: 1/500 - 1/2000. ELISA: 1/10000. Not yet tested in other applications.
<b>Concentration</b>	1 mg/ml
<b>Purity</b>	≥90%
<b>Storage Stability</b>	-20°C/1 year
<b>Synonyms</b>	FASTKD1; KIAA1800; FAST kinase domain-containing protein 1
<b>Observed Band</b>	97kD
<b>Cell Pathway</b>	Mitochondrion . Preferentially localizes to mitochondrial RNA granules, platforms for post-transcriptional RNA modification and ribosome assembly (PubMed:28335001). .
<b>Tissue Specificity</b>	Expression detected in spleen, thymus, testis, ovary, colon, heart, smooth muscle, kidney, brain, lung, liver and white adipose tissue with highest expression in heart.
<b>Function</b>	caution:It is uncertain whether Met-1 or Met-15 is the initiator.,similarity:Belongs to the FAST kinase family.,similarity:Contains 1 RAP domain.,
<b>Background</b>	caution:It is uncertain whether Met-1 or Met-15 is the initiator.,similarity:Belongs to the FAST kinase family.,similarity:Contains 1 RAP domain.,
<b>matters needing attention</b>	Avoid repeated freezing and thawing!

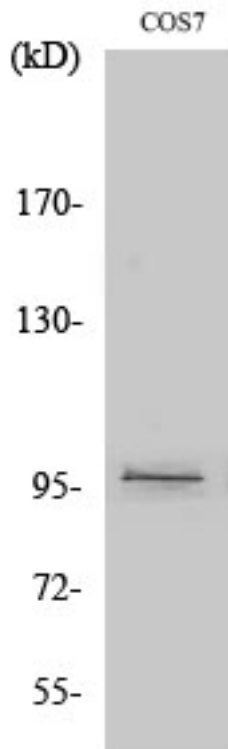
Nanjing BYabscience technology Co.,Ltd



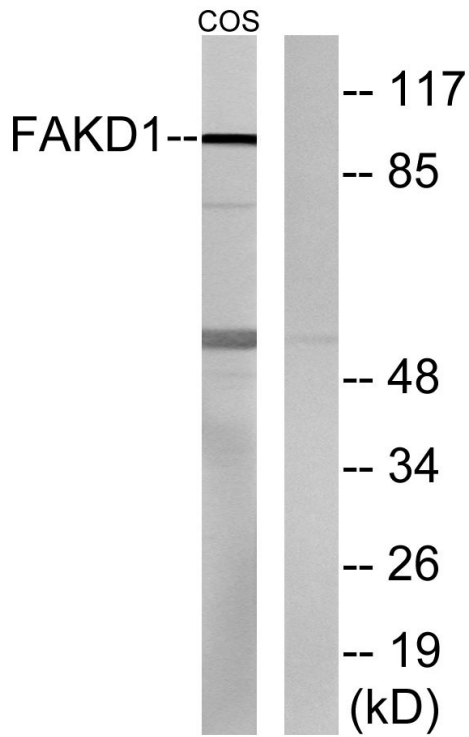
**Usage suggestions**

This product can be used in immunological reaction related experiments. For more information, please consult technical personnel.

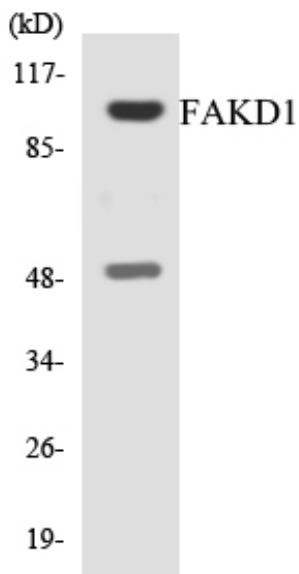
**Products Images**



Western Blot analysis of various cells using FASTKD1 Polyclonal Antibody



Western blot analysis of lysates from COS7 cells, using FAKD1 Antibody. The lane on the right is blocked with the synthesized peptide.



Western blot analysis of the lysates from HT-29 cells using FAKD1 antibody.