



# DOC-1 Polyclonal Antibody

<b>Catalog No</b>	BYab-00383
<b>Isotype</b>	IgG
<b>Reactivity</b>	Human;Mouse
<b>Applications</b>	WB;ELISA
<b>Gene Name</b>	CDK2AP1
<b>Protein Name</b>	Cyclin-dependent kinase 2-associated protein 1
<b>Immunogen</b>	The antiserum was produced against synthesized peptide derived from human CDKAP1. AA range:51-100
<b>Specificity</b>	DOC-1 Polyclonal Antibody detects endogenous levels of DOC-1 protein.
<b>Formulation</b>	Liquid in PBS containing 50% glycerol, 0.5% BSA and 0.02% sodium azide.
<b>Source</b>	Polyclonal, Rabbit,IgG
<b>Purification</b>	The antibody was affinity-purified from rabbit antiserum by affinity-chromatography using epitope-specific immunogen.
<b>Dilution</b>	Western Blot: 1/500 - 1/2000. ELISA: 1/5000. Not yet tested in other applications.
<b>Concentration</b>	1 mg/ml
<b>Purity</b>	≥90%
<b>Storage Stability</b>	-20°C/1 year
<b>Synonyms</b>	CDK2AP1; CDKAP1; DOC1; Cyclin-dependent kinase 2-associated protein 1; CDK2-associated protein 1; Deleted in oral cancer 1; DOC-1; Putative oral cancer suppressor
<b>Observed Band</b>	20kD
<b>Cell Pathway</b>	nucleus,perinuclear region of cytoplasm,
<b>Tissue Specificity</b>	Skin,Testis,
<b>Function</b>	similarity:Belongs to the CDK2AP family.,
<b>Background</b>	cyclin dependent kinase 2 associated protein 1(CDK2AP1) Homo sapiens The protein encoded by this gene is a cyclin-dependent kinase 2 (CDK2)-associated protein which is thought to negatively regulate CDK2 activity by sequestering monomeric CDK2, and targeting CDK2 for proteolysis. This protein was found to also interact with DNA polymerase alpha/primase and mediate the phosphorylation of the large p180 subunit, which suggests a regulatory role in

Nanjing BYabscience technology Co.,Ltd



DNA replication during the S-phase of the cell cycle. This protein also forms a core subunit of the nucleosome remodeling and histone deacetylation (NURD) complex that epigenetically regulates embryonic stem cell differentiation. This gene thus plays a role in both cell-cycle and epigenetic regulation. Alternative splicing results in multiple transcript variants encoding distinct isoforms. [provided by RefSeq, Jul 2012],

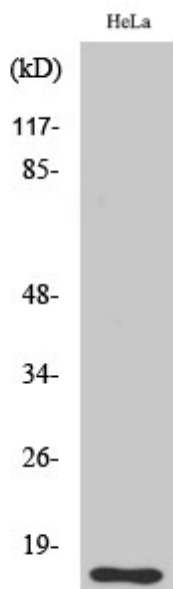
**matters needing attention**

Avoid repeated freezing and thawing!

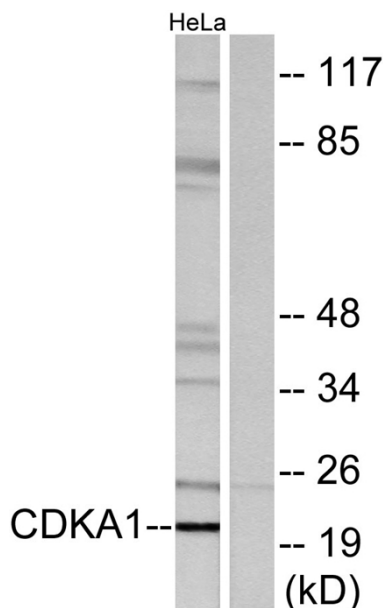
**Usage suggestions**

This product can be used in immunological reaction related experiments. For more information, please consult technical personnel.

**Products Images**

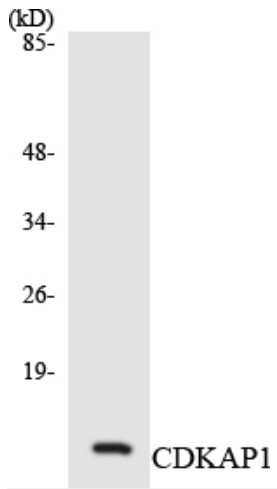


Western Blot analysis of various cells using DOC-1 Polyclonal Antibody diluted at 1:500



Western blot analysis of lysates from HeLa cells, using CDKPA1 Antibody. The lane on the right is blocked with the synthesized peptide.

Nanjing BYabscience technology Co.,Ltd



Western blot analysis of the lysates from HeLa cells using CDKAP1 antibody.