



# DNA Ligase I Polyclonal Antibody

<b>Catalog No</b>	BYab-00378
<b>Isotype</b>	IgG
<b>Reactivity</b>	Human;Rat;Mouse;
<b>Applications</b>	WB;IHC;IF;ELISA
<b>Gene Name</b>	LIG1
<b>Protein Name</b>	DNA ligase 1
<b>Immunogen</b>	The antiserum was produced against synthesized peptide derived from human DNL1. AA range:111-160
<b>Specificity</b>	DNA Ligase I Polyclonal Antibody detects endogenous levels of DNA Ligase I protein.
<b>Formulation</b>	Liquid in PBS containing 50% glycerol, 0.5% BSA and 0.02% sodium azide.
<b>Source</b>	Polyclonal, Rabbit,IgG
<b>Purification</b>	The antibody was affinity-purified from rabbit antiserum by affinity-chromatography using epitope-specific immunogen.
<b>Dilution</b>	WB: 1/500 - 1/2000. IHC: 1/100 - 1/300. ELISA: 1/20000.. IF 1:50-200
<b>Concentration</b>	1 mg/ml
<b>Purity</b>	≥90%
<b>Storage Stability</b>	-20°C/1 year
<b>Synonyms</b>	LIG1; DNA ligase 1; DNA ligase I; Polydeoxyribonucleotide synthase [ATP] 1
<b>Observed Band</b>	133kD
<b>Cell Pathway</b>	Nucleus.
<b>Tissue Specificity</b>	Brain,Epithelium,Eye,PCR rescued clones,T lymphoblast,
<b>Function</b>	catalytic activity:ATP + (deoxyribonucleotide)(n) + (deoxyribonucleotide)(m) = AMP + diphosphate + (deoxyribonucleotide)(n+m).,cofactor:Magnesium.,disease:Defects in LIG1 seem to cause immunodeficiencies and cellular hypersensitivity to DNA-damaging agents.,function:DNA ligase that seals nicks in double-stranded DNA during DNA replication, DNA recombination and DNA repair.,online information:DNA ligase entry,online information:LIG1 mutation db,similarity:Belongs to the ATP-dependent DNA ligase family.,
<b>Background</b>	This gene encodes a member of the ATP-dependent DNA ligase protein family. The encoded protein functions in DNA replication, recombination, and the base

Nanjing BYabscience technology Co.,Ltd



excision repair process. Mutations in this gene that lead to DNA ligase I deficiency result in immunodeficiency and increased sensitivity to DNA-damaging agents. Disruption of this gene may also be associated with a variety of cancers. Alternative splicing results in multiple transcript variants. [provided by RefSeq, Jan 2014],

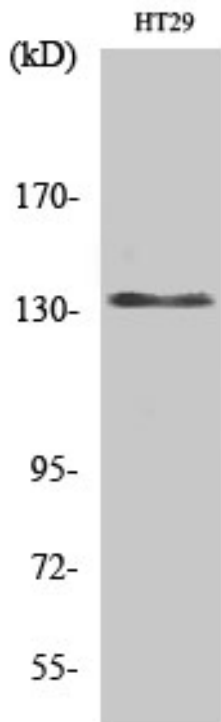
**matters needing attention**

Avoid repeated freezing and thawing!

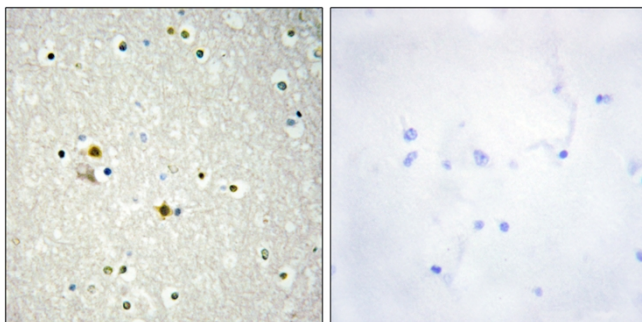
**Usage suggestions**

This product can be used in immunological reaction related experiments. For more information, please consult technical personnel.

## Products Images

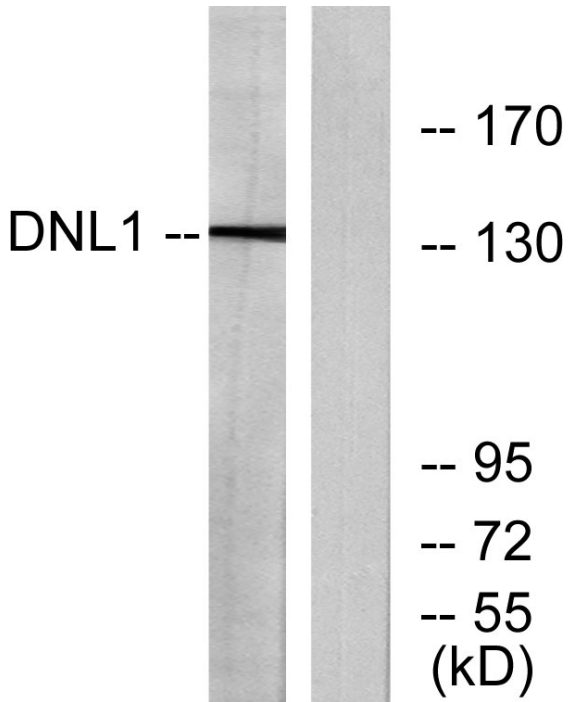


Western Blot analysis of various cells using DNA Ligase I Polyclonal Antibody diluted at 1:2000 cells nucleus extracted by Minute TM Cytoplasmic and Nuclear Fractionation kit (SC-003, Inventbiotech, MN, USA).



Immunohistochemistry analysis of paraffin-embedded human brain tissue, using DNL1 Antibody. The picture on the right is blocked with the synthesized peptide.

Nanjing BYabscience technology Co.,Ltd



Western blot analysis of lysates from HT-29 cells, using DNL1 Antibody. The lane on the right is blocked with the synthesized peptide.