



DBC-1 Polyclonal Antibody

Catalog No	BYab-00372
Isotype	IgG
Reactivity	Human;Rat;Mouse;
Applications	WB;IHC;IF;ELISA
Gene Name	KIAA1967
Protein Name	DBIRD complex subunit KIAA1967
Immunogen	The antiserum was produced against synthesized peptide derived from human KIAA1967. AA range:431-480
Specificity	DBC-1 Polyclonal Antibody detects endogenous levels of DBC-1 protein.
Formulation	Liquid in PBS containing 50% glycerol, 0.5% BSA and 0.02% sodium azide.
Source	Polyclonal, Rabbit,IgG
Purification	The antibody was affinity-purified from rabbit antiserum by affinity-chromatography using epitope-specific immunogen.
Dilution	WB: 1/500 - 1/2000. ELISA: 1/20000.. IF 1:50-200
Concentration	1 mg/ml
Purity	≥90%
Storage Stability	-20°C/1 year
Synonyms	KIAA1967; DBC1; DBIRD complex subunit KIAA1967; Deleted in breast cancer gene 1 protein; DBC-1; DBC.1; p30 DBC
Observed Band	102kD
Cell Pathway	Nucleus . Cytoplasm . Cytoplasm, cytoskeleton, spindle . Recruited to chromatin, post-UV irradiation. Sequestered to the cytoplasm in the presence of MCC. Translocated to the cytoplasm during UV-induced apoptosis. .
Tissue Specificity	Expressed in gastric carcinoma tissue and the expression gradually increases with the progression of the carcinoma (at protein level). Expressed ubiquitously in normal tissues. Expressed in 84 to 100% of neoplastic breast, lung, and colon tissues.
Function	tissue specificity:Expressed ubiquitously in normal tissues. Expressed in 84 to 100% of neoplastic breast, lung, and colon tissues.,
Background	tissue specificity:Expressed ubiquitously in normal tissues. Expressed in 84 to 100% of neoplastic breast, lung, and colon tissues.,

Nanjing BYabscience technology Co.,Ltd



matters needing attention

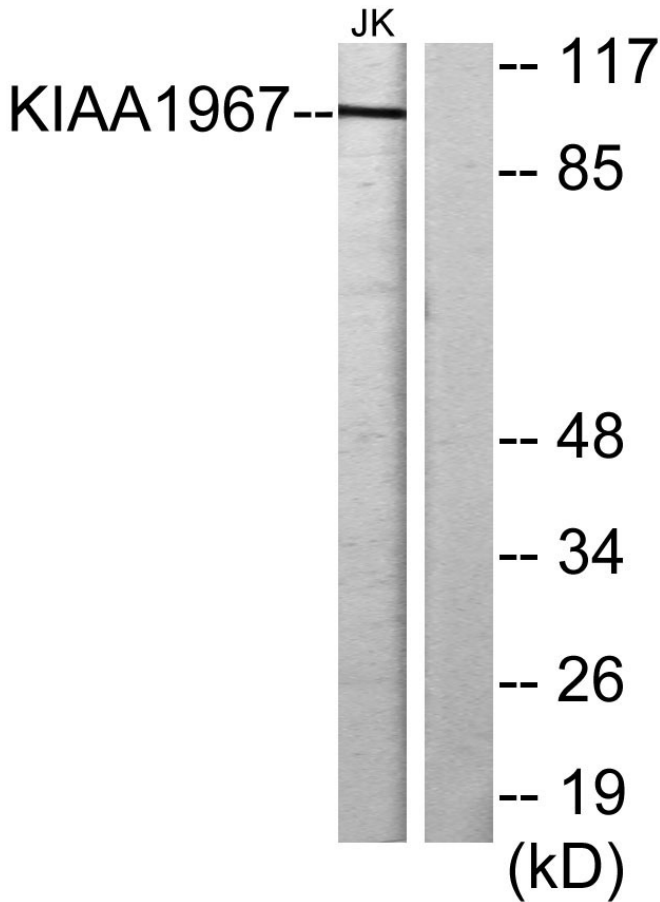
Avoid repeated freezing and thawing!

Usage suggestions

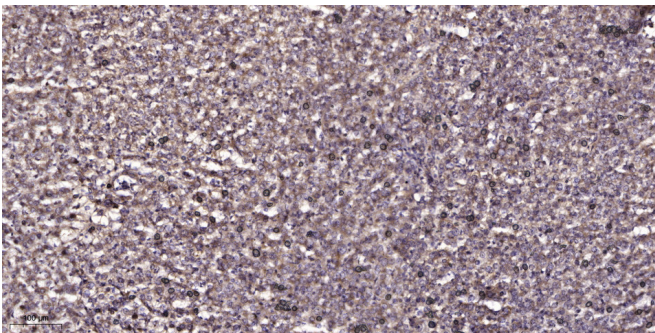
This product can be used in immunological reaction related experiments. For more information, please consult technical personnel.



Products Images



Western blot analysis of lysates from Jurkat cells, using KIAA1967 Antibody. The lane on the right is blocked with the synthesized peptide.



Immunohistochemical analysis of paraffin-embedded human liver cancer. 1, Antibody was diluted at 1:200(4° overnight). 2, Tris-EDTA, pH9.0 was used for antigen retrieval. 3, Secondary antibody was diluted at 1:200(room temperature, 45min).