



D55 Polyclonal Antibody

Catalog No	BYab-00368
Isotype	IgG
Reactivity	Human;Rat;Mouse;
Applications	IHC;IF;ELISA
Gene Name	TPD52L3
Protein Name	Tumor protein D55
Immunogen	The antiserum was produced against synthesized peptide derived from human TPD52L3. AA range:10-59
Specificity	D55 Polyclonal Antibody detects endogenous levels of D55 protein.
Formulation	Liquid in PBS containing 50% glycerol, 0.5% BSA and 0.02% sodium azide.
Source	Polyclonal, Rabbit,IgG
Purification	The antibody was affinity-purified from rabbit antiserum by affinity-chromatography using epitope-specific immunogen.
Dilution	IHC: 1/100 - 1/300. ELISA: 1/20000.. IF 1:50-200
Concentration	1 mg/ml
Purity	≥90%
Storage Stability	-20°C/1 year
Synonyms	TPD52L3; Tumor protein D55; hD55; Testis development protein NYD-SP25; Tumor protein D52-like 3
Observed Band	
Cell Pathway	
Tissue Specificity	Specifically expressed in testis. Expressed at 5.6-fold higher levels in adult testis than in fetal testis.
Function	similarity:Belongs to the TPD52 family.,tissue specificity:Specifically expressed in testis. Expressed at 5.6-fold higher levels in adult testis than in fetal testis.,
Background	This gene encodes a member of the tumor protein D52-like family of proteins. These proteins are characterized by an N-terminal coiled-coil motif that is used to form homo- and heteromeric complexes with other tumor protein D52-like proteins. The encoded protein may play a role in spermatogenesis. Alternative splicing results in multiple transcript variants. [provided by RefSeq, Oct 2009],

Nanjing BYabscience technology Co.,Ltd



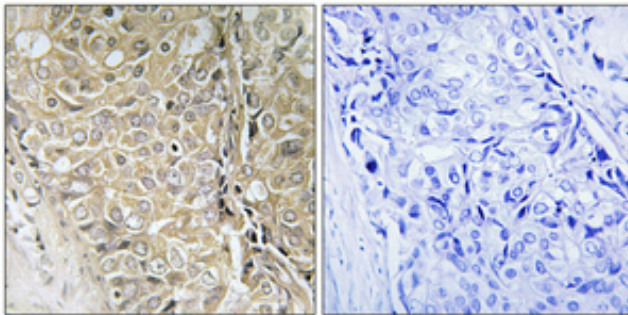
matters needing attention

Avoid repeated freezing and thawing!

Usage suggestions

This product can be used in immunological reaction related experiments. For more information, please consult technical personnel.

Products Images



Immunohistochemical analysis of paraffin-embedded Human prostate cancer. Antibody was diluted at 1:100(4° overnight). High-pressure and temperature Tris-EDTA,pH8.0 was used for antigen retrieval. Negative contrl (right) obtained from antibody was pre-absorbed by immunogen peptide.