



CYB561D2 Polyclonal Antibody

Catalog No	BYab-00364
Isotype	IgG
Reactivity	Human;Rat;Mouse;
Applications	WB;ELISA
Gene Name	CYB561D2
Protein Name	Cytochrome b561 domain-containing protein 2
Immunogen	The antiserum was produced against synthesized peptide derived from human C56D2. AA range:55-104
Specificity	CYB561D2 Polyclonal Antibody detects endogenous levels of CYB561D2 protein.
Formulation	Liquid in PBS containing 50% glycerol, 0.5% BSA and 0.02% sodium azide.
Source	Polyclonal, Rabbit,IgG
Purification	The antibody was affinity-purified from rabbit antiserum by affinity-chromatography using epitope-specific immunogen.
Dilution	Western Blot: 1/500 - 1/2000. ELISA: 1/20000. Not yet tested in other applications.
Concentration	1 mg/ml
Purity	≥90%
Storage Stability	-20°C/1 year
Synonyms	CYB561D2; 101F6; LUCA12.2; Cytochrome b561 domain-containing protein 2; Putative tumor suppressor protein 101F6
Observed Band	24kD
Cell Pathway	Endoplasmic reticulum membrane ; Multi-pass membrane protein . Cytoplasmic vesicle membrane ; Multi-pass membrane protein .
Tissue Specificity	Pancreas,
Function	cofactor: Binds 2 heme groups non-covalently.,similarity: Contains 1 cytochrome b561 domain.,
Background	cofactor: Binds 2 heme groups non-covalently.,similarity: Contains 1 cytochrome b561 domain.,
matters needing attention	Avoid repeated freezing and thawing!

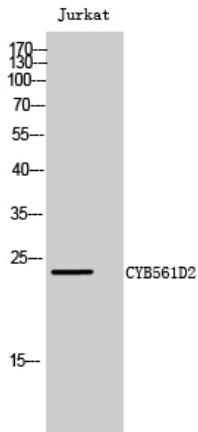
Nanjing BYabscience technology Co.,Ltd



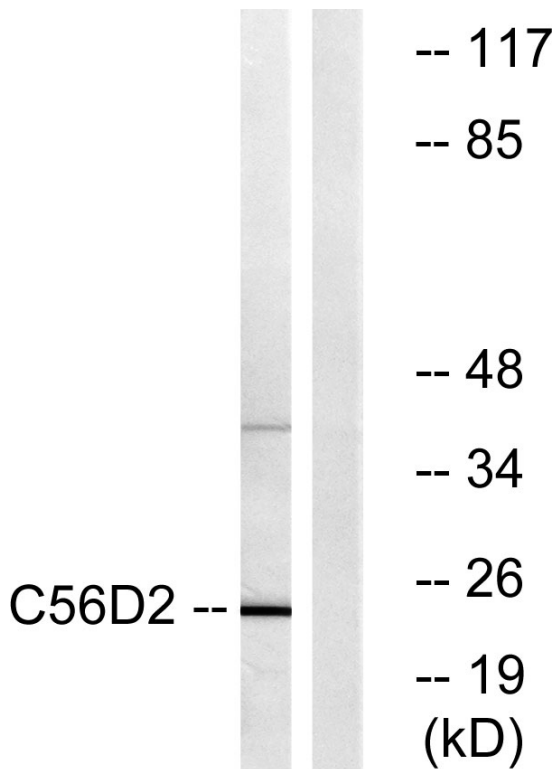
Usage suggestions

This product can be used in immunological reaction related experiments. For more information, please consult technical personnel.

Products Images



Western Blot analysis of Jurkat cells using CYB561D2 Polyclonal Antibody



Western blot analysis of lysates from Jurkat cells, using C56D2 Antibody. The lane on the right is blocked with the synthesized peptide.