



# CYB561D1 Polyclonal Antibody

<b>Catalog No</b>	BYab-00363
<b>Isotype</b>	IgG
<b>Reactivity</b>	Human;Rat;Mouse;
<b>Applications</b>	WB;IF;ELISA
<b>Gene Name</b>	CYB561D1
<b>Protein Name</b>	Cytochrome b561 domain-containing protein 1
<b>Immunogen</b>	The antiserum was produced against synthesized peptide derived from human CYB561D1. AA range:180-229
<b>Specificity</b>	CYB561D1 Polyclonal Antibody detects endogenous levels of CYB561D1 protein.
<b>Formulation</b>	Liquid in PBS containing 50% glycerol, 0.5% BSA and 0.02% sodium azide.
<b>Source</b>	Polyclonal, Rabbit,IgG
<b>Purification</b>	The antibody was affinity-purified from rabbit antiserum by affinity-chromatography using epitope-specific immunogen.
<b>Dilution</b>	Western Blot: 1/500 - 1/2000. Immunofluorescence: 1/200 - 1/1000. ELISA: 1/40000. Not yet tested in other applications.
<b>Concentration</b>	1 mg/ml
<b>Purity</b>	≥90%
<b>Storage Stability</b>	-20°C/1 year
<b>Synonyms</b>	CYB561D1; Cytochrome b561 domain-containing protein 1
<b>Observed Band</b>	23kD
<b>Cell Pathway</b>	Membrane ; Multi-pass membrane protein .
<b>Tissue Specificity</b>	Brain,Cerebellum,Liver,Tongue,
<b>Function</b>	cofactor: Binds 2 heme groups non-covalently.,similarity: Contains 1 cytochrome b561 domain.,
<b>Background</b>	cofactor: Binds 2 heme groups non-covalently.,similarity: Contains 1 cytochrome b561 domain.,
<b>matters needing attention</b>	Avoid repeated freezing and thawing!

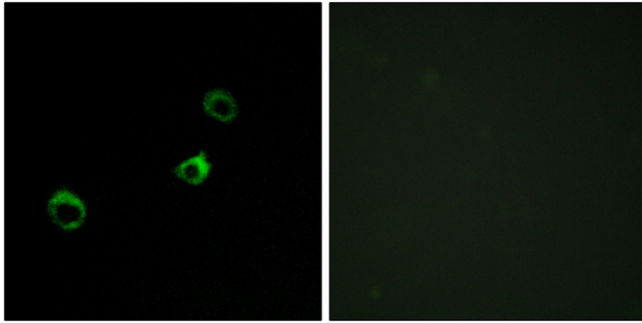
Nanjing BYabscience technology Co.,Ltd



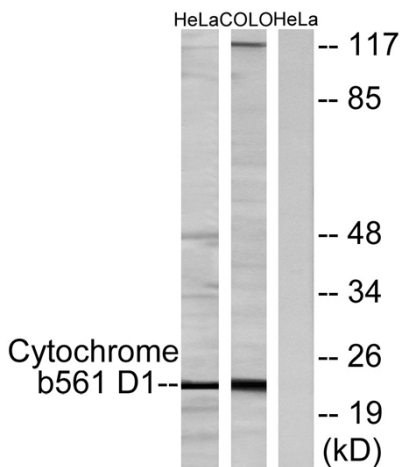
**Usage suggestions**

This product can be used in immunological reaction related experiments. For more information, please consult technical personnel.

**Products Images**



Immunofluorescence analysis of MCF-7 cells, using Cytochrome b561 D1 Antibody. The picture on the right is blocked with the synthesized peptide.



Western blot analysis of lysates from HeLa cells and COLO205 cells, using Cytochrome b561 D1 Antibody. The lane on the right is blocked with the synthesized peptide.