



CSRNP2 Polyclonal Antibody

Catalog No	BYab-00361
Isotype	IgG
Reactivity	Human;Mouse;Rat
Applications	WB;IHC;IF;ELISA
Gene Name	CSRNP2
Protein Name	Cysteine/serine-rich nuclear protein 2
Immunogen	The antiserum was produced against synthesized peptide derived from human TAIP-12. AA range:91-140
Specificity	CSRNP2 Polyclonal Antibody detects endogenous levels of CSRNP2 protein.
Formulation	Liquid in PBS containing 50% glycerol, 0.5% BSA and 0.02% sodium azide.
Source	Polyclonal, Rabbit,IgG
Purification	The antibody was affinity-purified from rabbit antiserum by affinity-chromatography using epitope-specific immunogen.
Dilution	WB: 1/500 - 1/2000. IHC: 1/100 - 1/300. ELISA: 1/20000.. IF 1:50-200
Concentration	1 mg/ml
Purity	≥90%
Storage Stability	-20°C/1 year
Synonyms	CSRNP2; C12orf22; FAM130A1; TAIP12; Cysteine/serine-rich nuclear protein 2; CSRNP-2; Protein FAM130A1; TGF-beta-induced apoptosis protein 12; TAIP-12
Observed Band	60kD
Cell Pathway	Nucleus .
Tissue Specificity	Brain,Heart,
Function	function:Binds to the consensus sequence 5'-AGAGTG-3' and has transcriptional activator activity (By similarity). May play a role in apoptosis.,similarity:Belongs to the AXUD1 family.,
Background	The protein encoded by this gene belongs to the CSRNP family of nuclear proteins that share conserved regions, including cysteine- and serine- rich regions, a basic domain, a transcriptional activation domain, and bind the sequence 'AGAGTG', thus have the hallmark of transcription factors. Studies in mice suggest that these genes may have redundant functions. Alternatively spliced transcript variants have been found for this gene. [provided by RefSeq, Aug 2011],

Nanjing BYabscience technology Co.,Ltd



matters needing attention

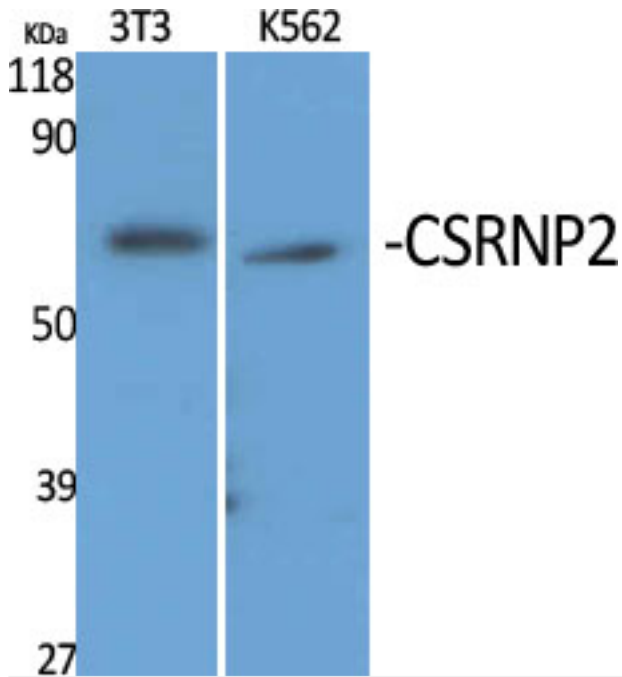
Avoid repeated freezing and thawing!

Usage suggestions

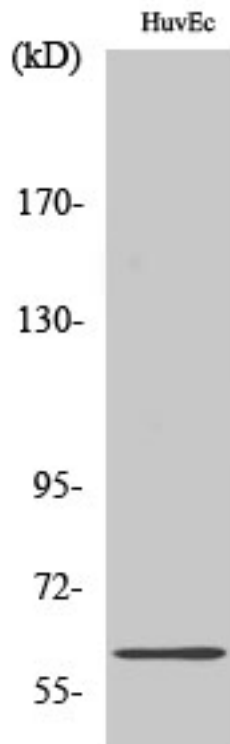
This product can be used in immunological reaction related experiments. For more information, please consult technical personnel.



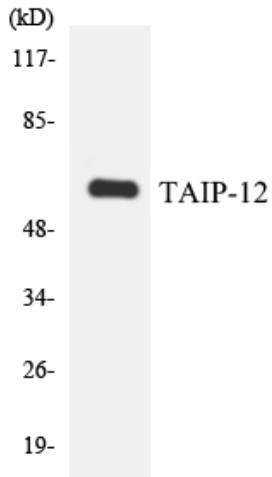
Products Images



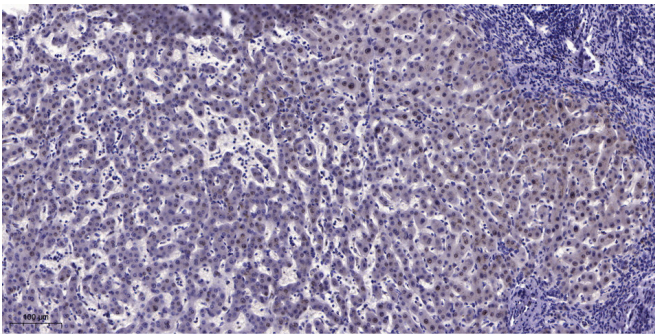
Western Blot analysis of various cells using CSRNP2 Polyclonal Antibody cells nucleus extracted by Minute TM Cytoplasmic and Nuclear Fractionation kit (SC-003, Inventbiotech, MN, USA).



Western Blot analysis of A549 cells using CSRNP2 Polyclonal Antibody cells nucleus extracted by Minute TM Cytoplasmic and Nuclear Fractionation kit (SC-003, Inventbiotech, MN, USA).



Western blot analysis of the lysates from 293 cells using TAIP-12 antibody.



Immunohistochemical analysis of paraffin-embedded human liver cancer. 1, Antibody was diluted at 1:200(4° overnight). 2, Tris-EDTA,pH9.0 was used for antigen retrieval. 3,Secondary antibody was diluted at 1:200(room temperature, 45min).