



# BRCAA1 Polyclonal Antibody

<b>Catalog No</b>	BYab-00336
<b>Isotype</b>	IgG
<b>Reactivity</b>	Human;Mouse;Rat
<b>Applications</b>	WB;ELISA
<b>Gene Name</b>	ARID4B
<b>Protein Name</b>	AT-rich interactive domain-containing protein 4B
<b>Immunogen</b>	The antiserum was produced against synthesized peptide derived from human BRCAA1. AA range:761-810
<b>Specificity</b>	BRCAA1 Polyclonal Antibody detects endogenous levels of BRCAA1 protein.
<b>Formulation</b>	Liquid in PBS containing 50% glycerol, 0.5% BSA and 0.02% sodium azide.
<b>Source</b>	Polyclonal, Rabbit,IgG
<b>Purification</b>	The antibody was affinity-purified from rabbit antiserum by affinity-chromatography using epitope-specific immunogen.
<b>Dilution</b>	Western Blot: 1/500 - 1/2000. ELISA: 1/10000. Not yet tested in other applications.
<b>Concentration</b>	1 mg/ml
<b>Purity</b>	≥90%
<b>Storage Stability</b>	-20°C/1 year
<b>Synonyms</b>	ARID4B; BRCAA1; RBBP1L1; RBP1L1; SAP180; AT-rich interactive domain-containing protein 4B; ARID domain-containing protein 4B; 180 kDa Sin3-associated polypeptide; Sin3-associated polypeptide p180; Breast cancer-associated antigen BRCAA1; Hi
<b>Observed Band</b>	148kD
<b>Cell Pathway</b>	Nucleus . Cytoplasm . Cytoplasmic in breast cancer cells. .
<b>Tissue Specificity</b>	Highly expressed in the testis and in breast, lung, colon, pancreatic and ovarian cancers. Expressed at low levels in the thymus, prostate and ovary.
<b>Function</b>	domain:The ARID domain is involved in stabilizing the mSin3A corepressor complex on DNA.,domain:The C-terminus mediates interaction with mSin3A corepressor complex.,domain:The N-terminus is involved in transcriptional repression by HDAC-independent mechanisms.,function:Acts as a transcriptional repressor. May function in the assembly and/or enzymatic activity of the Sin3A corepressor complex or in mediating interactions between the complex and other regulatory complexes.,similarity:Contains 1 ARID domain.,subcellular

**Nanjing BYabscience technology Co.,Ltd**



location:Cytoplasmic in breast cancer cells.,subunit:Component of a Sin3A corepressor complex consisting of SIN3A, SAP130, SUDS3/SAP45, SAP180, HDAC1 and HDAC2.,tissue specificity:Highly expressed in the testis and in breast, lung, colon, pancreatic and ovarian cancers. Expressed at low levels in the thymus, prostate and ovary.,

#### Background

This gene encodes a protein with sequence similarity to retinoblastoma-binding protein-1. The encoded protein is a subunit of the histone deacetylase-dependant SIN3A transcriptional corepressor complex, which functions in diverse cellular processes including proliferation, differentiation, apoptosis, oncogenesis, and cell fate determination. The gene product is recognized by IgG antibody isolated from a breast cancer patient and appears to be a molecular marker associated with a broad range of human malignancies. Alternate transcriptional splice variants encoding different isoforms have been characterized. [provided by RefSeq, Jul 2008],

#### matters needing attention

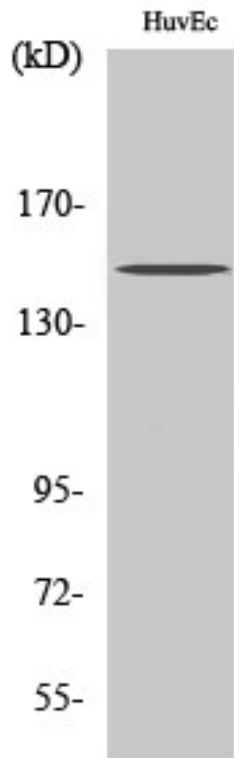
Avoid repeated freezing and thawing!

#### Usage suggestions

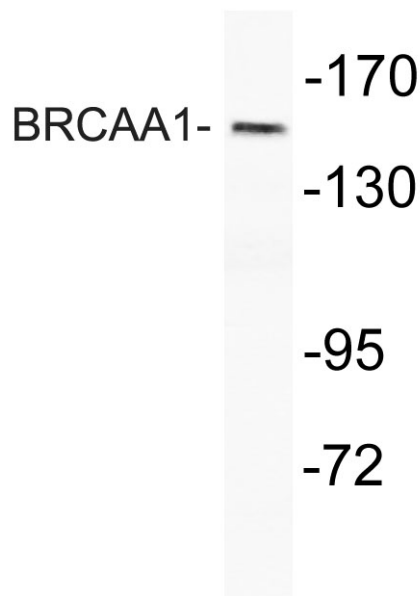
This product can be used in immunological reaction related experiments. For more information, please consult technical personnel.



## Products Images



Western Blot analysis of various cells using BRCAA1 Polyclonal Antibody



Western blot analysis of lysate from HUVEC cells, using BRCAA1 antibody.