



BCL2L12 Polyclonal Antibody

Catalog No	BYab-00323
Isotype	IgG
Reactivity	Human;Mouse
Applications	WB;ELISA
Gene Name	BCL2L12
Protein Name	Bcl-2-like protein 12
Immunogen	Synthesized peptide derived from BCL2L12 . at AA range: 60-140
Specificity	BCL2L12 Polyclonal Antibody detects endogenous levels of BCL2L12 protein.
Formulation	Liquid in PBS containing 50% glycerol, 0.5% BSA and 0.02% sodium azide.
Source	Polyclonal, Rabbit,IgG
Purification	The antibody was affinity-purified from rabbit antiserum by affinity-chromatography using epitope-specific immunogen.
Dilution	Western Blot: 1/500 - 1/2000. ELISA: 1/5000. Not yet tested in other applications.
Concentration	1 mg/ml
Purity	≥90%
Storage Stability	-20°C/1 year
Synonyms	BCL2L12; BPR; Bcl-2-like protein 12; Bcl2-L-12; Bcl-2-related proline-rich protein
Observed Band	34kD
Cell Pathway	nucleus,membrane,
Tissue Specificity	Expressed mainly in breast, thymus, prostate, fetal liver, colon, placenta, pancreas, small intestine, spinal cord, kidney, and bone marrow and to a lesser extent in many other tissues. Isoform 2 is primarily expressed in skeletal muscle.
Function	similarity:Belongs to the Bcl-2 family.,tissue specificity:Expressed mainly in breast, thymus, prostate, fetal liver, colon, placenta, pancreas, small intestine, spinal cord, kidney, and bone marrow and to a lesser extent in many other tissues. Isoform 2 is primarily expressed in skeletal muscle.,
Background	This gene encodes a member of a family of proteins containing a Bcl-2 homology domain 2 (BH2). The encoded protein is an anti-apoptotic factor that acts as an inhibitor of caspases 3 and 7 in the cytoplasm. In the nucleus, it binds to the p53 tumor suppressor protein, preventing its association with target genes. Overexpression of this gene has been detected in a number of different cancers. There is a pseudogene for this gene on chromosome 3. Alternative splicing results

Nanjing BYabscience technology Co.,Ltd



in multiple transcript variants. [provided by RefSeq, Sep 2013],

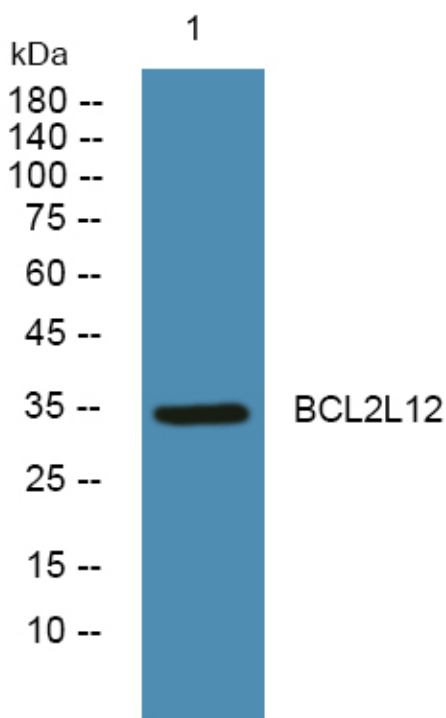
matters needing attention

Avoid repeated freezing and thawing!

Usage suggestions

This product can be used in immunological reaction related experiments. For more information, please consult technical personnel.

Products Images



Western blot analysis of lysates from Jarkat cells, primary antibody was diluted at 1:1000, 4° over night