



BCA3 Polyclonal Antibody

Catalog No	BYab-00320
Isotype	IgG
Reactivity	Human;Rat;Mouse;
Applications	WB;IHC;IF;ELISA
Gene Name	AKIP1
Protein Name	A-kinase-interacting protein 1
Immunogen	The antiserum was produced against synthesized peptide derived from human BCA3. AA range:111-160
Specificity	BCA3 Polyclonal Antibody detects endogenous levels of BCA3 protein.
Formulation	Liquid in PBS containing 50% glycerol, 0.5% BSA and 0.02% sodium azide.
Source	Polyclonal, Rabbit,IgG
Purification	The antibody was affinity-purified from rabbit antiserum by affinity-chromatography using epitope-specific immunogen.
Dilution	WB: 1/500 - 1/2000. IHC: 1/100 - 1/300. ELISA: 1/20000.. IF 1:50-200
Concentration	1 mg/ml
Purity	≥90%
Storage Stability	-20°C/1 year
Synonyms	AKIP1; BCA3; C11orf17; A-kinase-interacting protein 1; Breast cancer-associated gene 3 protein; PKA-interacting protein; Proline-rich protein BCA3
Observed Band	26kD
Cell Pathway	Nucleus . Locates to punctate spots.
Tissue Specificity	Expressed at high levels in adult heart and at lower levels in brain, testis, ovary and skeletal muscle. Up-regulated in some breast cancer cell lines. Isoform 1 and isoform 3 are expressed in fetal brain.
Function	subcellular location:Locates to punctate spots.,subunit:Interacts with PRKACA.,tissue specificity:Expressed at high levels in adult heart and at lower levels in brain, testis, ovary and skeletal muscle. Up-regulated in some breast cancer cell lines. Isoform 1 and isoform 3 are expressed in fetal brain.,
Background	This gene encodes a nuclear protein that interacts with protein kinase A catalytic subunit, and regulates the effect of the cAMP-dependent protein kinase signaling pathway on the NF-kappa-B activation cascade. Alternatively spliced transcript variants have been described for this gene. [provided by RefSeq, Oct 2011],

Nanjing BYabscience technology Co.,Ltd



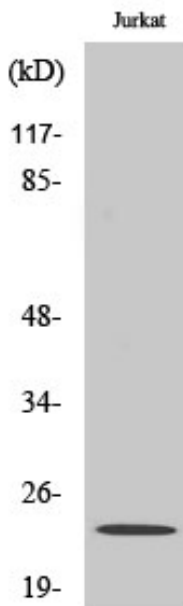
matters needing attention

Avoid repeated freezing and thawing!

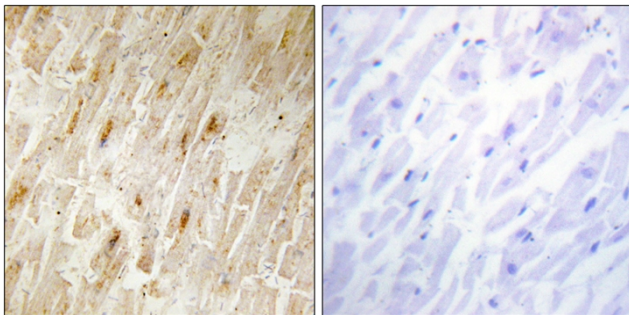
Usage suggestions

This product can be used in immunological reaction related experiments. For more information, please consult technical personnel.

Products Images

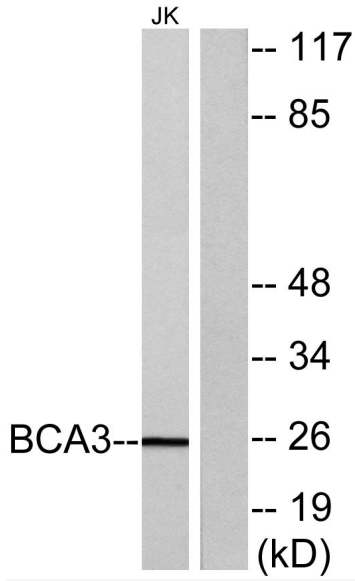


Western Blot analysis of various cells using BCA3 Polyclonal Antibody cells nucleus extracted by Minute TM Cytoplasmic and Nuclear Fractionation kit (SC-003, Inventibiotech, MN, USA).

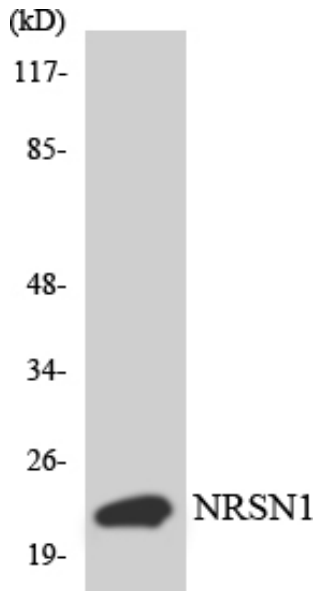


Immunohistochemistry analysis of paraffin-embedded human heart tissue, using BCA3 Antibody. The picture on the right is blocked with the synthesized peptide.

Nanjing BYabscience technology Co.,Ltd



Western blot analysis of lysates from Jurkat cells, using BCA3 Antibody. The lane on the right is blocked with the synthesized peptide.



Western blot analysis of the lysates from HepG2 cells using BCA3 antibody.