



Bag-3 Polyclonal Antibody

Catalog No	BYab-00309
Isotype	IgG
Reactivity	Human;Mouse;Rat
Applications	WB;IHC;IF;ELISA
Gene Name	BAG3
Protein Name	BAG family molecular chaperone regulator 3
Immunogen	The antiserum was produced against synthesized peptide derived from human BAG3. AA range:411-460
Specificity	Bag-3 Polyclonal Antibody detects endogenous levels of Bag-3 protein.
Formulation	Liquid in PBS containing 50% glycerol, 0.5% BSA and 0.02% sodium azide.
Source	Polyclonal, Rabbit,IgG
Purification	The antibody was affinity-purified from rabbit antiserum by affinity-chromatography using epitope-specific immunogen.
Dilution	WB: 1/500 - 1/2000. IHC: 1/100 - 1/300. ELISA: 1/40000.. IF 1:50-200
Concentration	1 mg/ml
Purity	≥90%
Storage Stability	-20°C/1 year
Synonyms	BAG3; BIS; BAG family molecular chaperone regulator 3; BAG-3; Bcl-2-associated athanogene 3; Bcl-2-binding protein Bis; Docking protein CAIR-1
Observed Band	80kD
Cell Pathway	Nucleus . Cytoplasm . Colocalizes with HSF1 to the nucleus upon heat stress (PubMed:26159920). .
Tissue Specificity	Brain,Epithelium,Liver,Lung,Placenta,T-cell,Testis,Tongue,
Function	function:Inhibits the chaperone activity of HSP70/HSC70 by promoting substrate release. Has anti-apoptotic activity.,similarity:Contains 1 BAG domain.,similarity:Contains 2 WW domains.,subunit:Binds to the ATPase domain of HSP70/HSC chaperones. Binds to Bcl-2 and PLC-gamma.,
Background	BAG proteins compete with Hip for binding to the Hsc70/Hsp70 ATPase domain and promote substrate release. All the BAG proteins have an approximately 45-amino acid BAG domain near the C terminus but differ markedly in their N-terminal regions. The protein encoded by this gene contains a WW domain in

Nanjing BYabscience technology Co.,Ltd



the N-terminal region and a BAG domain in the C-terminal region. The BAG domains of BAG1, BAG2, and BAG3 interact specifically with the Hsc70 ATPase domain in vitro and in mammalian cells. All 3 proteins bind with high affinity to the ATPase domain of Hsc70 and inhibit its chaperone activity in a Hip-repressible manner. [provided by RefSeq, Jul 2008],

matters needing attention

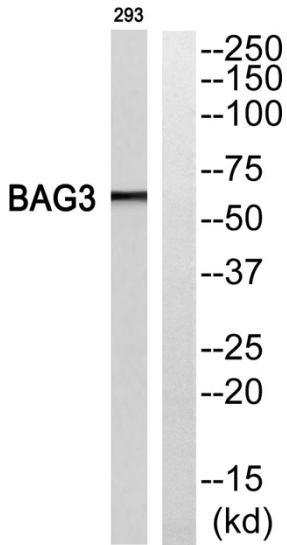
Avoid repeated freezing and thawing!

Usage suggestions

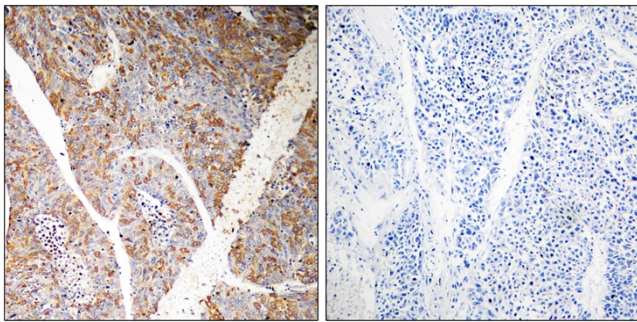
This product can be used in immunological reaction related experiments. For more information, please consult technical personnel.



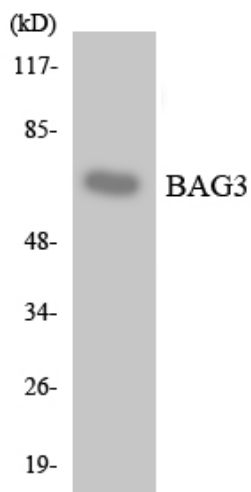
Products Images



Western blot analysis of BAG3 Antibody. The lane on the right is blocked with the BAG3 peptide.



Immunohistochemistry analysis of paraffin-embedded human liver carcinoma, using BAG3 Antibody. The lane on the right is blocked with the BAG3 peptide.



Western blot analysis of the lysates from K562 cells using BAG3 antibody.