



# Aven Polyclonal Antibody

<b>Catalog No</b>	BYab-00303
<b>Isotype</b>	IgG
<b>Reactivity</b>	Human;Monkey
<b>Applications</b>	WB;IHC;IF;ELISA
<b>Gene Name</b>	AVEN
<b>Protein Name</b>	Cell death regulator Aven
<b>Immunogen</b>	The antiserum was produced against synthesized peptide derived from human AVEN. AA range:301-350
<b>Specificity</b>	Aven Polyclonal Antibody detects endogenous levels of Aven protein.
<b>Formulation</b>	Liquid in PBS containing 50% glycerol, 0.5% BSA and 0.02% sodium azide.
<b>Source</b>	Polyclonal, Rabbit,IgG
<b>Purification</b>	The antibody was affinity-purified from rabbit antiserum by affinity-chromatography using epitope-specific immunogen.
<b>Dilution</b>	Western Blot: 1/500 - 1/2000. Immunohistochemistry: 1/100 - 1/300. Immunofluorescence: 1/200 - 1/1000. ELISA: 1/20000. Not yet tested in other applications.
<b>Concentration</b>	1 mg/ml
<b>Purity</b>	≥90%
<b>Storage Stability</b>	-20°C/1 year
<b>Synonyms</b>	AVEN; Cell death regulator Aven
<b>Observed Band</b>	55kD
<b>Cell Pathway</b>	Endomembrane system; Peripheral membrane protein. Associated with intracellular membranes.
<b>Tissue Specificity</b>	Highly expressed in testis, ovary, thymus, prostate, spleen, small intestine, colon, heart, skeletal muscle, liver, kidney and pancreas.
<b>Function</b>	function:Protects against apoptosis mediated by Apaf-1.,subcellular location:Associated with intracellular membranes.,subunit:Binds Apaf-1, BCL-2 and BAD (Bcl-xl).,tissue specificity:Highly expressed in testis, ovary, thymus, prostate, spleen, small intestine, colon, heart, skeletal muscle, liver, kidney and pancreas.,
<b>Background</b>	function:Protects against apoptosis mediated by Apaf-1.,subcellular location:Associated with intracellular membranes.,subunit:Binds Apaf-1, BCL-2 and BAD (Bcl-xl).,tissue specificity:Highly expressed in testis, ovary, thymus, prostate, spleen, small intestine, colon, heart, skeletal muscle, liver, kidney and

**Nanjing BYabscience technology Co.,Ltd**



pancreas.,

**matters needing attention**

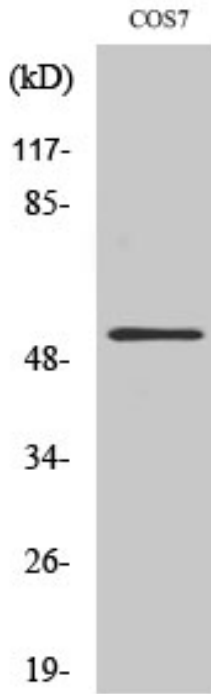
Avoid repeated freezing and thawing!

**Usage suggestions**

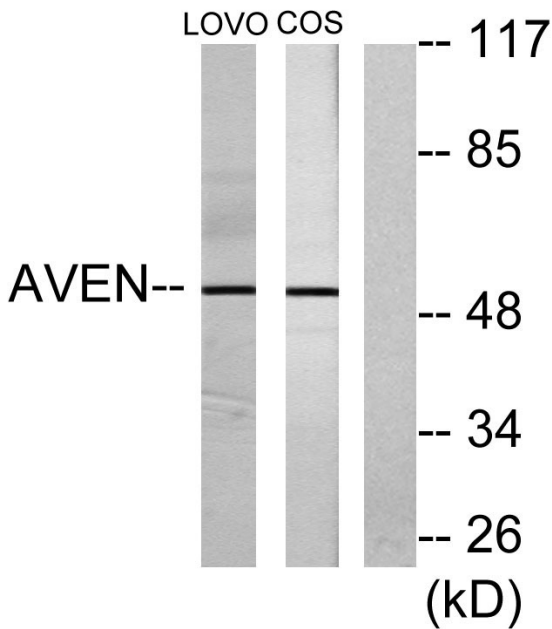
This product can be used in immunological reaction related experiments. For more information, please consult technical personnel.



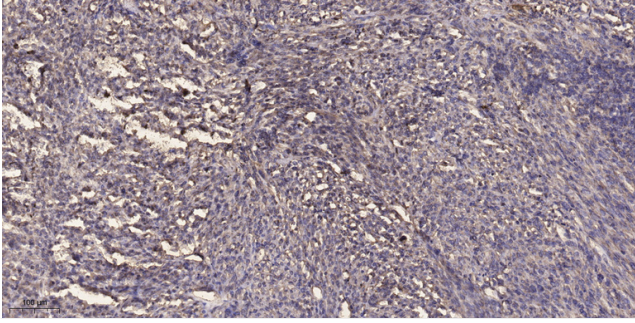
## Products Images



Western Blot analysis of various cells using Aven Polyclonal Antibody



Western blot analysis of lysates from COS7 and LOVO cells, using AVEN Antibody. The lane on the right is blocked with the synthesized peptide.



Immunohistochemical analysis of paraffin-embedded human Colon cancer. 1, Antibody was diluted at 1:200(4° overnight). 2, Tris-EDTA,pH9.0 was used for antigen retrieval. 3,Secondary antibody was diluted at 1:200(room temperature, 45min).