



# Bcl-2 (phospho Ser87) Polyclonal Antibody

<b>Catalog No</b>	BYab-00195
<b>Isotype</b>	IgG
<b>Reactivity</b>	Human;Mouse;Rat
<b>Applications</b>	WB;IHC;IF;ELISA
<b>Gene Name</b>	BCL2
<b>Protein Name</b>	Apoptosis regulator Bcl-2
<b>Immunogen</b>	The antiserum was produced against synthesized peptide derived from human BCL-2 around the phosphorylation site of Ser87. AA range:61-110
<b>Specificity</b>	Phospho-Bcl-2 (S87) Polyclonal Antibody detects endogenous levels of Bcl-2 protein only when phosphorylated at S87.
<b>Formulation</b>	Liquid in PBS containing 50% glycerol, 0.5% BSA and 0.02% sodium azide.
<b>Source</b>	Polyclonal, Rabbit,IgG
<b>Purification</b>	The antibody was affinity-purified from rabbit antiserum by affinity-chromatography using epitope-specific immunogen.
<b>Dilution</b>	WB: 1/500 - 1/2000. IHC: 1/100 - 1/300. ELISA: 1/5000.. IF 1:50-200
<b>Concentration</b>	1 mg/ml
<b>Purity</b>	≥90%
<b>Storage Stability</b>	-20°C/1 year
<b>Synonyms</b>	BCL2; Apoptosis regulator Bcl-2
<b>Observed Band</b>	28kD
<b>Cell Pathway</b>	Mitochondrion outer membrane ; Single-pass membrane protein . Nucleus membrane ; Single-pass membrane protein . Endoplasmic reticulum membrane ; Single-pass membrane protein . Cytoplasm .
<b>Tissue Specificity</b>	Expressed in a variety of tissues.
<b>Function</b>	disease:A chromosomal aberration involving BCL2 may be a cause of follicular lymphoma (FL) [MIM:151430]; also known as type II chronic lymphatic leukemia. Translocation t(14;18)(q32;q21) with immunoglobulin gene regions. BCL2 mutations found in non-Hodgkin lymphomas carrying the chromosomal translocation could be attributed to the Ig somatic hypermutation mechanism resulting in nucleotide transitions.,domain:The BH4 motif is required for anti-apoptotic activity and for interaction with RAF-1.,function:Suppresses apoptosis in a variety of cell systems including factor-dependent lymphohematopoietic and neural cells. Regulates cell death by controlling the mitochondrial membrane permeability. Appears to function in a feedback loop

**Nanjing BYabscience technology Co.,Ltd**



system with caspases. Inhibits caspase activity either by preventing the release of cytochrome c from the mitochondria and/or by binding to the apoptosis-activati

**Background**

BCL2, apoptosis regulator(BCL2) Homo sapiens This gene encodes an integral outer mitochondrial membrane protein that blocks the apoptotic death of some cells such as lymphocytes. Constitutive expression of BCL2, such as in the case of translocation of BCL2 to Ig heavy chain locus, is thought to be the cause of follicular lymphoma. Alternative splicing results in multiple transcript variants. [provided by RefSeq, Feb 2016],

**matters needing attention**

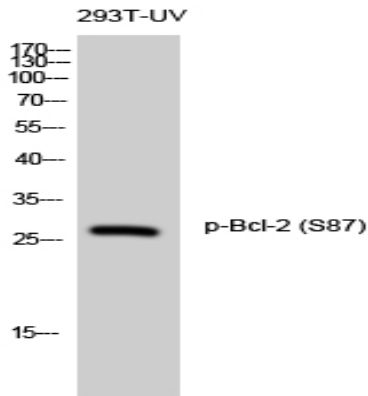
Avoid repeated freezing and thawing!

**Usage suggestions**

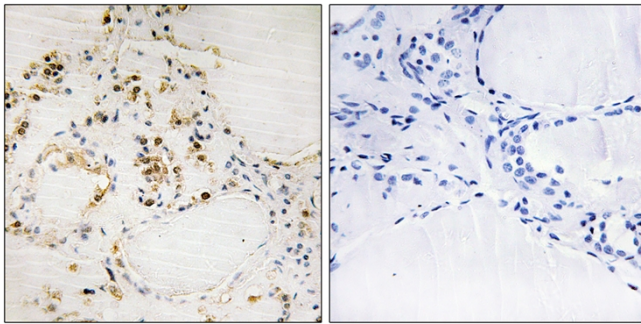
This product can be used in immunological reaction related experiments. For more information, please consult technical personnel.



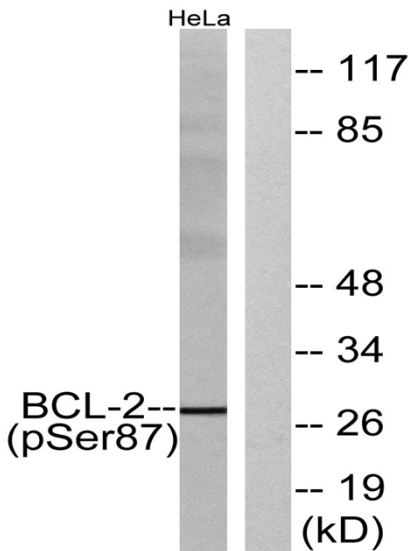
## Products Images



Western Blot analysis of 293T-UV cells using Phospho-Bcl-2 (S87) Polyclonal Antibody diluted at 1:500



Immunohistochemistry analysis of paraffin-embedded human thyroid gland, using BCL-2 (Phospho-Ser87) Antibody. The picture on the right is blocked with the phospho peptide.



Western blot analysis of lysates from HeLa cells treated with nocodazole 1ug/ml 18h, using BCL-2 (Phospho-Ser87) Antibody. The lane on the right is blocked with the phospho peptide.