



Caspase-8 (phospho Tyr380) Polyclonal Antibody

| | |
|---------------------------|--|
| Catalog No | BYab-00177 |
| Isotype | IgG |
| Reactivity | Human;Rat;Mouse; |
| Applications | WB;ELISA |
| Gene Name | CASP8 |
| Protein Name | Caspase8 |
| Immunogen | The antiserum was produced against synthesized peptide derived from human Caspase 8 around the phosphorylation site of Tyr380. AA range:346-395 |
| Specificity | Phospho-Caspase-8 (Y380) Polyclonal Antibody detects endogenous levels of Caspase-8 protein only when phosphorylated at Y380. |
| Formulation | Liquid in PBS containing 50% glycerol, 0.5% BSA and 0.02% sodium azide. |
| Source | Polyclonal, Rabbit,IgG |
| Purification | The antibody was affinity-purified from rabbit antiserum by affinity-chromatography using epitope-specific immunogen. |
| Dilution | Western Blot: 1/500 - 1/2000. ELISA: 1/10000. Not yet tested in other applications. |
| Concentration | 1 mg/ml |
| Purity | ≥90% |
| Storage Stability | -20°C/1 year |
| Synonyms | CASP8; MCH5; Caspase-8; CASP-8; Apoptotic cysteine protease; Apoptotic protease Mch-5; CAP4; FADD-homologous ICE/ced-3-like protease; FADD-like ICE; FLICE; ICE-like apoptotic protease 5; MORT1-associated ced-3 homolog; MACH |
| Observed Band | 55kD |
| Cell Pathway | Cytoplasm . Nucleus . |
| Tissue Specificity | Isoform 1, isoform 5 and isoform 7 are expressed in a wide variety of tissues. Highest expression in peripheral blood leukocytes, spleen, thymus and liver. Barely detectable in brain, testis and skeletal muscle. |
| Function | catalytic activity:Strict requirement for Asp at position P1 and has a preferred cleavage sequence of (Leu/Asp/Val)-Glu-Thr-Asp- -(Gly/Ser/Ala).,disease:Defects in CASP8 are the cause of caspase-8 deficiency (CASP8D) [MIM:607271]. CASP8D is a disorder resembling autoimmune lymphoproliferative syndrome (ALPS). It is characterized by lymphadenopathy, splenomegaly, and defective CD95-induced apoptosis of |

Nanjing BYabscience technology Co.,Ltd



peripheral blood lymphocytes (PBLs). It leads to defects in activation of T-lymphocytes, B-lymphocytes, and natural killer cells leading to immunodeficiency characterized by recurrent sinopulmonary and herpes simplex virus infections and poor responses to immunization. domain: Isoform 9 contains a N-terminal extension that is required for interaction with the BCAP31 complex. function: Most upstream protease of the activation cascade of caspases responsible for the TNFRSF6/FAS mediated and TNF

Background

This gene encodes a member of the cysteine-aspartic acid protease (caspase) family. Sequential activation of caspases plays a central role in the execution-phase of cell apoptosis. Caspases exist as inactive proenzymes composed of a prodomain, a large protease subunit, and a small protease subunit. Activation of caspases requires proteolytic processing at conserved internal aspartic residues to generate a heterodimeric enzyme consisting of the large and small subunits. This protein is involved in the programmed cell death induced by Fas and various apoptotic stimuli. The N-terminal FADD-like death effector domain of this protein suggests that it may interact with Fas-interacting protein FADD. This protein was detected in the insoluble fraction of the affected brain region from Huntington disease patients but not in those from normal controls, which implicated the role in neurodegenerative diseases. Many alt

matters needing attention

Avoid repeated freezing and thawing!

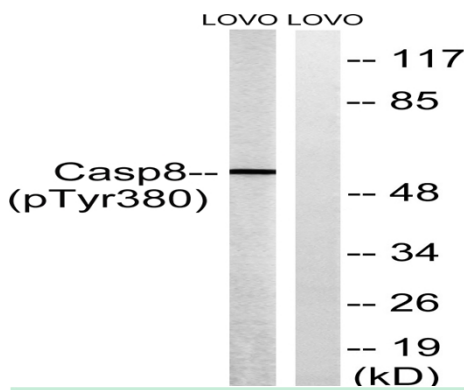
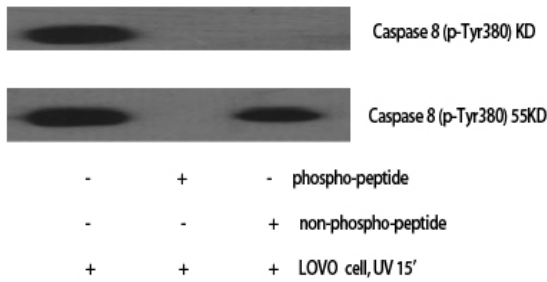
Usage suggestions

This product can be used in immunological reaction related experiments. For more information, please consult technical personnel.

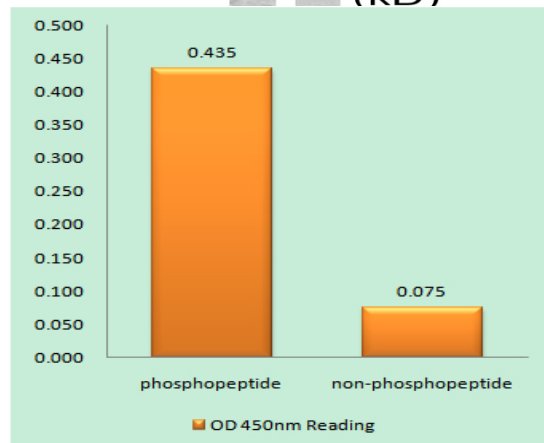


Products Images

Western Blot analysis of various cells using Phospho-Caspase-8 (Y380) Polyclonal Antibody



Enzyme-Linked Immunosorbent Assay (Phospho-ELISA) for Immunogen Phosphopeptide (Phospho-left) and Non-Phosphopeptide (Phospho-right), using Caspase 8 (Phospho-Tyr380) Antibody



Western blot analysis of lysates from LOVO cells treated with UV 15', using Caspase 8 (Phospho-Tyr380) Antibody. The lane on the right is blocked with the phospho peptide.

Nanjing BYabscience technology Co.,Ltd