



Beclin 1 mouse mAb

Catalog No	BYab-00095
Isotype	IgG
Reactivity	Human;Mouse;Rat;Monkey;Hamster
Applications	WB;IP
Gene Name	becn1
Protein Name	
Immunogen	Purified recombinant human Beclin 1 protein fragments expressed in E.coli.
Specificity	This antibody detects endogenous levels of Beclin 1 and does not cross-react with related proteins.
Formulation	Liquid in PBS containing 50% glycerol, 0.5% BSA and 0.02% sodium azide.
Source	Monoclonal, Mouse
Purification	The antibody was affinity-purified from mouse ascites by affinity-chromatography using epitope-specific immunogen.
Dilution	wb 1:1000 IP:1:50-200
Concentration	1 mg/ml
Purity	≥90%
Storage Stability	-20°C/1 year
Synonyms	APG6;ATG 6;ATG6;ATG6 autophagy related 6 homolog;Bcl-2-interacting protein beclin;Beclin 1 (coiled coil moesin like BCL2 interacting protein);Beclin 1 autophagy related;Beclin-1;Beclin1;BECN 1;BECN1;BECN1_HUMAN;Coiled coil myosin like BCL2 interacting protein; Coiled-coil myosin-like BCL2-interacting protein;GT197;Protein GT197;VPS 30;VPS30.
Observed Band	55kD
Cell Pathway	Cytoplasm . Golgi apparatus, trans-Golgi network membrane ; Peripheral membrane protein . Endosome membrane ; Peripheral membrane protein . Endoplasmic reticulum membrane ; Peripheral membrane protein . Mitochondrion membrane ; Peripheral membrane protein . Endosome . Cytoplasmic vesicle, autophagosome . Interaction with ATG14 promotes translocation to autophagosomes. Expressed in dendrites and cell bodies of cerebellar Purkinje cells (By similarity). . ; [Beclin-1-C 35 kDa]: Mitochondrion . Nucleus . Cytoplasm . ; [Beclin-1-C 37 kDa]: Mitochondrion .
Tissue Specificity	Ubiquitous.

Nanjing BYabscience technology Co.,Ltd

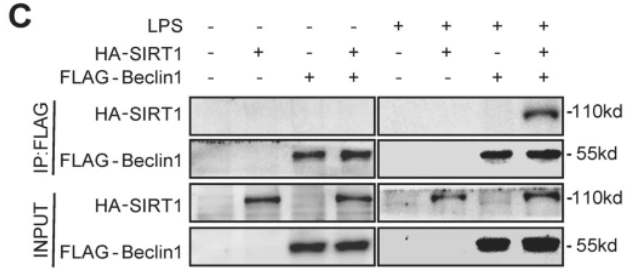


Function	function:Plays a central role in autophagy (By similarity). May play a role in antiviral host defense. Protects against infection by a neurovirulent strain of Sindbis virus.,similarity:Belongs to the beclin family.,subcellular location:Expressed in dendrites and cell bodies of cerebellar Purkinje cells.,subunit:Interacts with GOPC and GRID2. Interacts with AMBRA1. Probably forms a complex with AMBRA1 and PIK3C3 (By similarity). Interacts with BCL2 and BCL2L1.,tissue specificity:Ubiquitous.,
Background	beclin 1(BECN1) Homo sapiens This gene encodes a protein that regulates autophagy, a catabolic process of degradation induced by starvation. The encoded protein is a component of the phosphatidylinositol-3-kinase (PI3K) complex which mediates vesicle-trafficking processes. This protein is thought to play a role in multiple cellular processes, including tumorigenesis, neurodegeneration and apoptosis. Alternative splicing results in multiple transcript variants. [provided by RefSeq, Sep 2015],
matters needing attention	Avoid repeated freezing and thawing!
Usage suggestions	This product can be used in immunological reaction related experiments. For more information, please consult technical personnel.

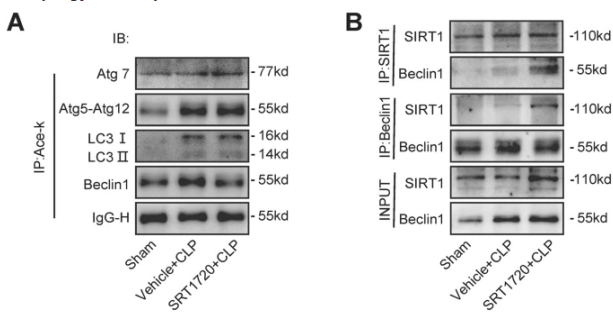
Nanjing BYabscience technology Co.,Ltd



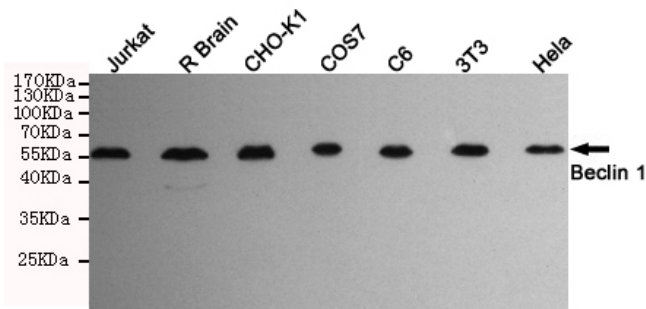
Products Images



Deng, Z., Sun, M., Wu, J. et al. SIRT1 attenuates sepsis-induced acute kidney injury via Beclin1 deacetylation-mediated autophagy activation. *Cell Death Dis* 12, 217 (2021).



Deng, Z., Sun, M., Wu, J. et al. SIRT1 attenuates sepsis-induced acute kidney injury via Beclin1 deacetylation-mediated autophagy activation. *Cell Death Dis* 12, 217 (2021).



Western blot detection of Beclin 1 in HeLa, 3T3, C6, COS7, CHO-K1, Rat brain and Jurkat cell lysates using Beclin 1 mouse mAb (1:1000 diluted). Predicted band size: 52KDa. Observed band size: 55KDa.